



701 S Ridge Avenue, Troy, OH 45374
1-888-4HOBART • www.hobartcorp.com

TURBOWASH II WITH SCRAPPER



STANDARD FEATURES

- Type 300 series stainless steel construction
- 14 gauge stainless tanks and drain boards
- 11" high x 2½" deep back splash
- Stainless steel pump and impeller
- Self-draining pump
- Sink front trim panel
- Eight 1½" diameter wash nozzles
- Removable, welded H frame leg sets and adjustable bullet feet
- Detachable and adjustable height cross rails
- Dual inlet strainers
- Centrifugal pump with 2.5" diameter intake and 2" diameter outlet
- 2 H.P. totally enclosed (TEFC) wash pump motor with permanently sealed bearings
- Low water protection for wash pump motor
- Inherent motor overload protection, automatic reset
- 20"L x 16"W x 5¾"D deep scrapping sink or
28"L x 16¾"W x 11"D deep scrapping sink with
27"L x 18¾"W x 4¾"D deep shelf

DIRECTION FROM SOILED TO CLEAN END

- ☐ Right to Left
- ☐ Left to Right

VOLTAGE

- ☐ 208-240/60/3
- ☐ 480/60/3

OPTIONS AT ADDITIONAL COST

- ☐ 1½" IPS scrapper drain (shipped loose)
- ☐ 2" IPS sink drains (shipped loose)
- ☐ 2" IPS sink drains w/overflow (drains shipped loose)
- ☐ ¾" mixing faucets (shipped loose) Qty. _____
- ☐ ½" pre-rinse spray (shipped loose)
- ☐ Wash sink heater with high temperature and low water protection
- ☐ Adjustable (by Hobart service) pump shutdown timer
- ☐ High volume wash sink sump (12" x 12" x 3½" deep) with removable strainer
- ☐ Wash sink separator available (for wash sinks 42" or larger)
- ☐ Auto fill
- ☐ Utensil basket
- ☐ Hobart disposer with separate or single point electrical connection
- 15" deep over shelves with wall brackets Qty. _____
- ☐ 4' over shelf _____
- ☐ 6' over shelf _____
- ☐ 8' over shelf _____
- ☐ 10' over shelf (split 6' and 4') _____
- ☐ 12' over shelf (split 6' and 6') _____
- ☐ 14' over shelf (split 8' and 6') _____
- ☐ 16' over shelf (split 8' and 8') _____
- ☐ 18' over shelf (split 6', 4' and 8') _____
- ☐ 20' over shelf (split 2'-6' and 2'-4') _____
- ☐ Under shelf for clean end drain boards 30" and over
- ☐ Pan rack, 7 pan capacity
- ☐ Chemical pumps

Specifications, Details and Dimensions on Inside and Back.



ANSI/NSF 2
Sanitation



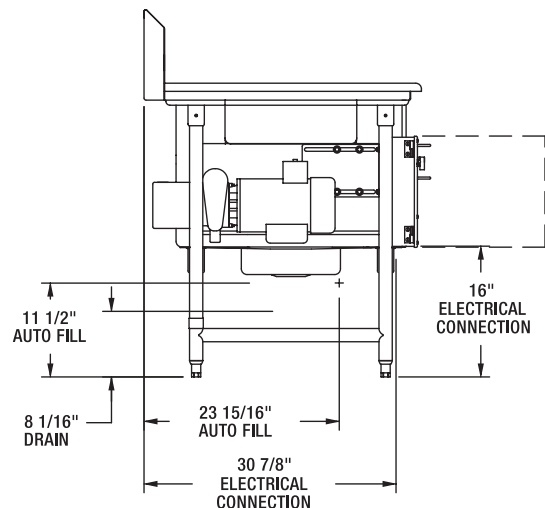
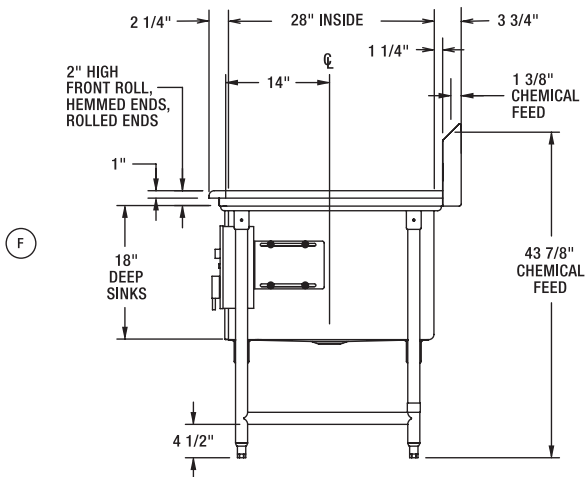
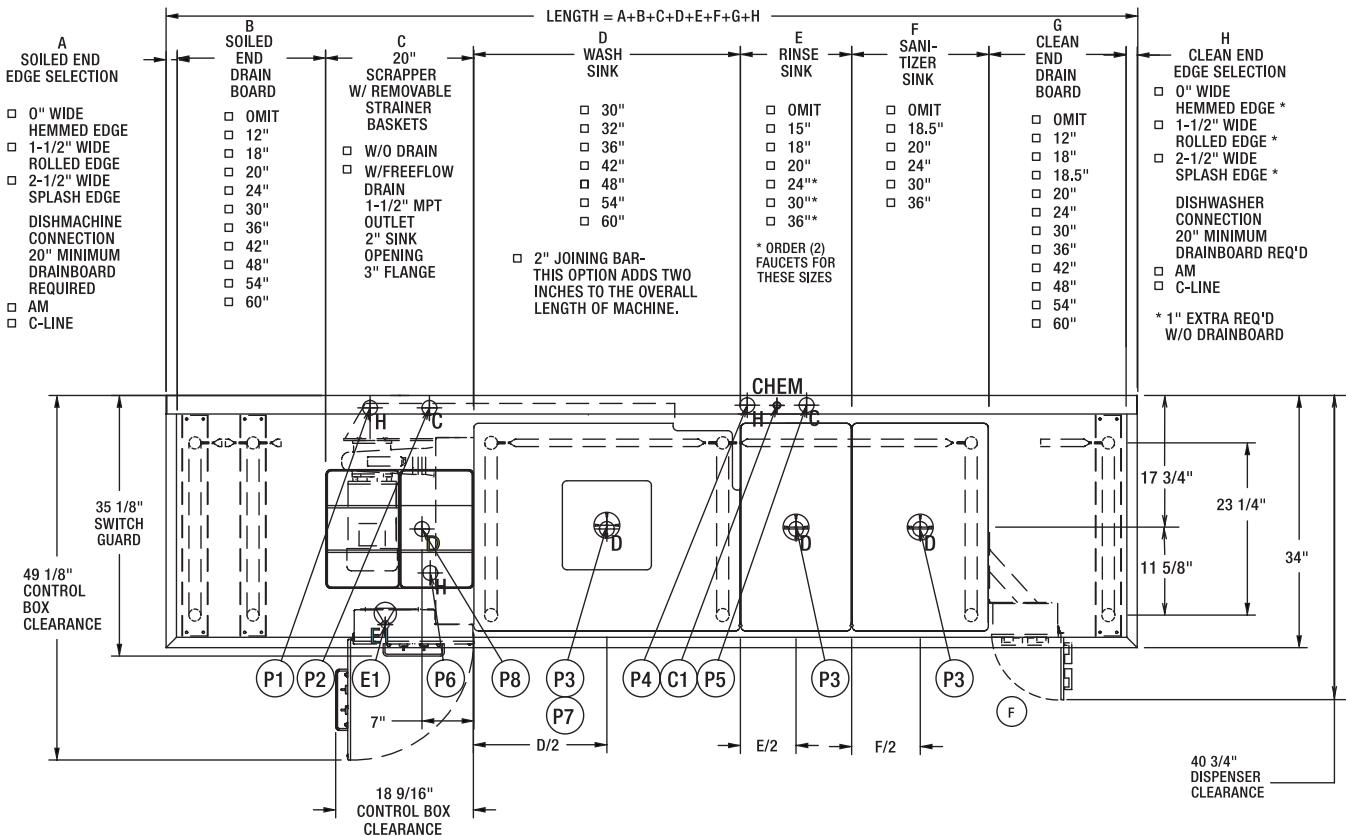
TURBOWASH II WITH SCRAPER

TURBOWASH II WITH 20" SCRAPER

HOBART

701 S Ridge Avenue, Troy, OH 45374
1-888-4HOBART • www.hobartcorp.com

DETAILS AND DIMENSIONS



749866
TurboWash II
W/20" SCRAPER
L-R OPERATION
REV. F

WARNING

ELECTRICAL AND GROUNDING CONNECTIONS
MUST COMPLY WITH THE APPLICABLE
PORTIONS OF THE NATIONAL ELECTRICAL
CODE AND/OR OTHER LOCAL ELECTRICAL CODES.

PLUMBING CONNECTIONS MUST COMPLY
WITH APPLICABLE SANITARY, SAFETY,
AND PLUMBING CODES.

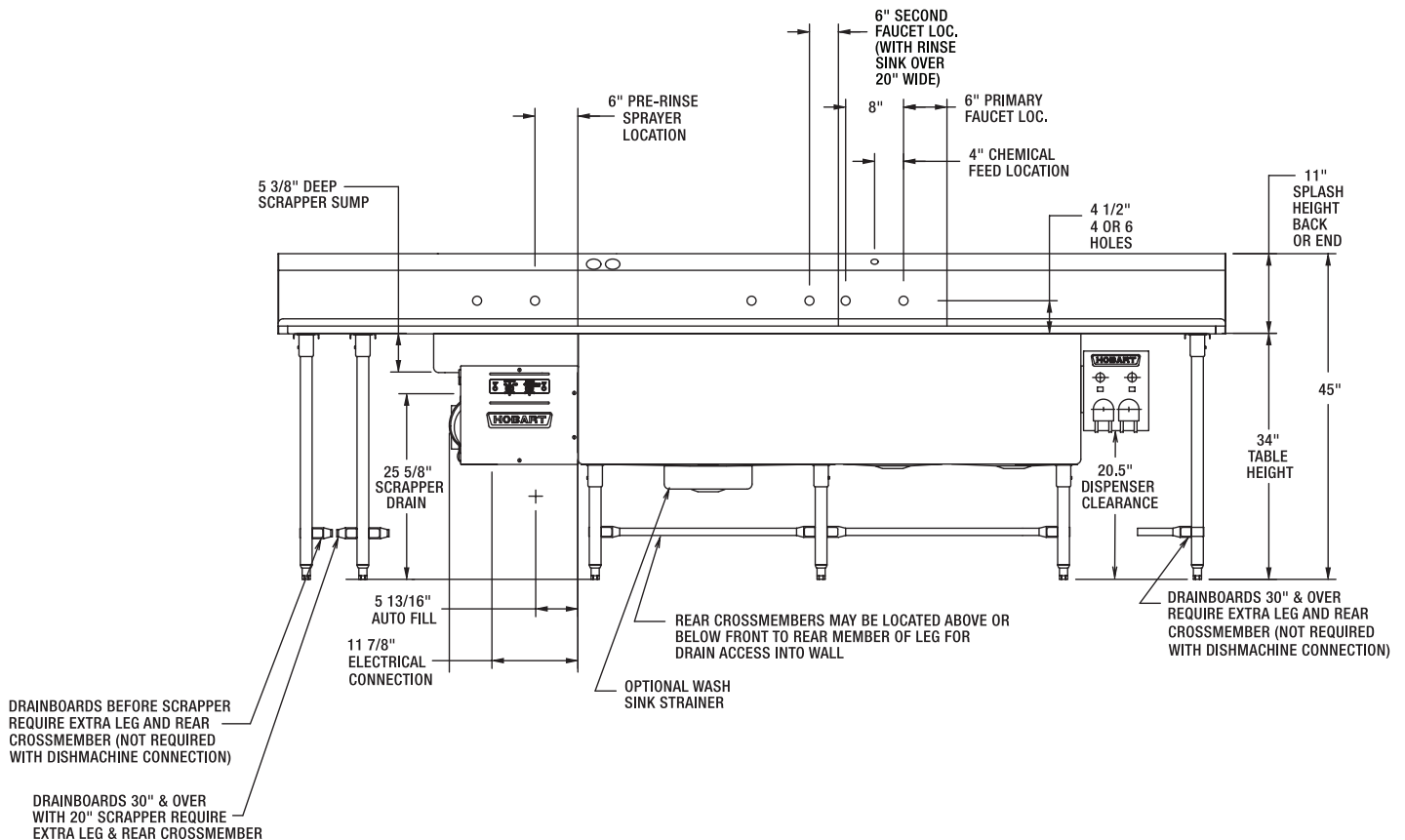
LEGEND CONNECTION INFORMATION (*AFF - ABOVE FINISHED FLOOR)

- C1 CHEMICAL FEED CONNECTION: (OVER PRIMARY FAUCET), 1" DIA. HOLE FOR HOSE GROMMET, 43-7/8" AFF.
- E1 ELECTRICAL CONNECTION: MOTORS AND CONTROLS (INCLUDES ELECTRIC HEAT WHEN ORDERED), 3/4" CONDUIT, 16" AFF.
- P1 HOT WATER CONNECTION: PRE-RINSE SPRAYER (WHEN ORDERED), 1/2" FPT, 36-15/16" AFF.
- P2 COLD WATER CONNECTION: PRE-RINSE SPRAYER (WHEN ORDERED), 1/2" FPT, 36-15/16" AFF.
- P3 SINK DRAINS: (1-3 CONNECTIONS-WHEN ORDERED), 2" MPT, 11-3/16" AFF.
- P4 HOT WATER CONNECTION: MIXING FAUCET (WHEN ORDERED), 3/4" FPT, 36-5/8" AFF.
- P5 COLD WATER CONNECTION: MIXING FAUCET (WHEN ORDERED), 3/4" FPT, 36-5/8" AFF.
- P6 HOT WATER CONNECTION: AUTO FILL (WHEN ORDERED), 3/4" FPT, 11-1/2" AFF.
- P7 WASH SINK WITH STRAINER DRAIN CONNECTION (WHEN ORDERED), 2" MPT, EXTERNAL THREAD, 8-1/16" AFF.
- P8 SCRAPPER DRAIN: (WHEN ORDERED) 1-1/2" MPT, 25-5/8" AFF.

ALL DIMENSIONS TAKEN FROM FINISHED FLOOR LINE MAY INCREASE 3/4" OR DECREASE 1/2" DEPENDING ON LEG ADJUSTMENT.
RECOMMENDED 7-3/4" AFF WALL DRAIN LOCATION.

| TurboWash WITH ELECTRIC HEAT | | | |
|---------------------------------|------------|---|---------------------------------------|
| ELEC. SPECS. | RATED AMPS | MINIMUM SUPPLY CIRCUIT CONDUCTOR AMPACITY | MAXIMUM OVERCURRENT PROTECTIVE DEVICE |
| 208-240/60/3 | 17.0 | 20 | 20 |
| 480/60/3 | 10.2 | 15 | 15 |

| TurboWash (W/O ELECTRIC HEAT) | | | |
|----------------------------------|------------|---|---------------------------------------|
| ELEC. SPECS. | RATED AMPS | MINIMUM SUPPLY CIRCUIT CONDUCTOR AMPACITY | MAXIMUM OVERCURRENT PROTECTIVE DEVICE |
| 208-240/60/3 | 5.6 | 15 | 15 |
| 480/60/3 | 5.1 | 15 | 15 |

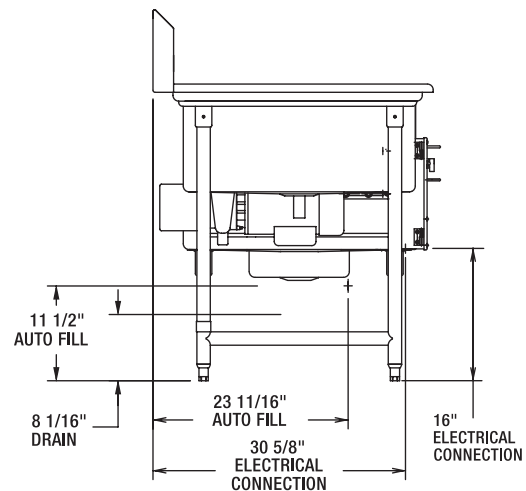
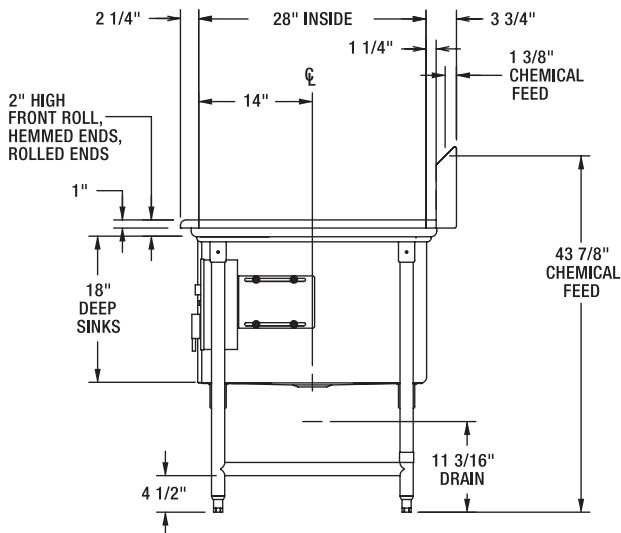
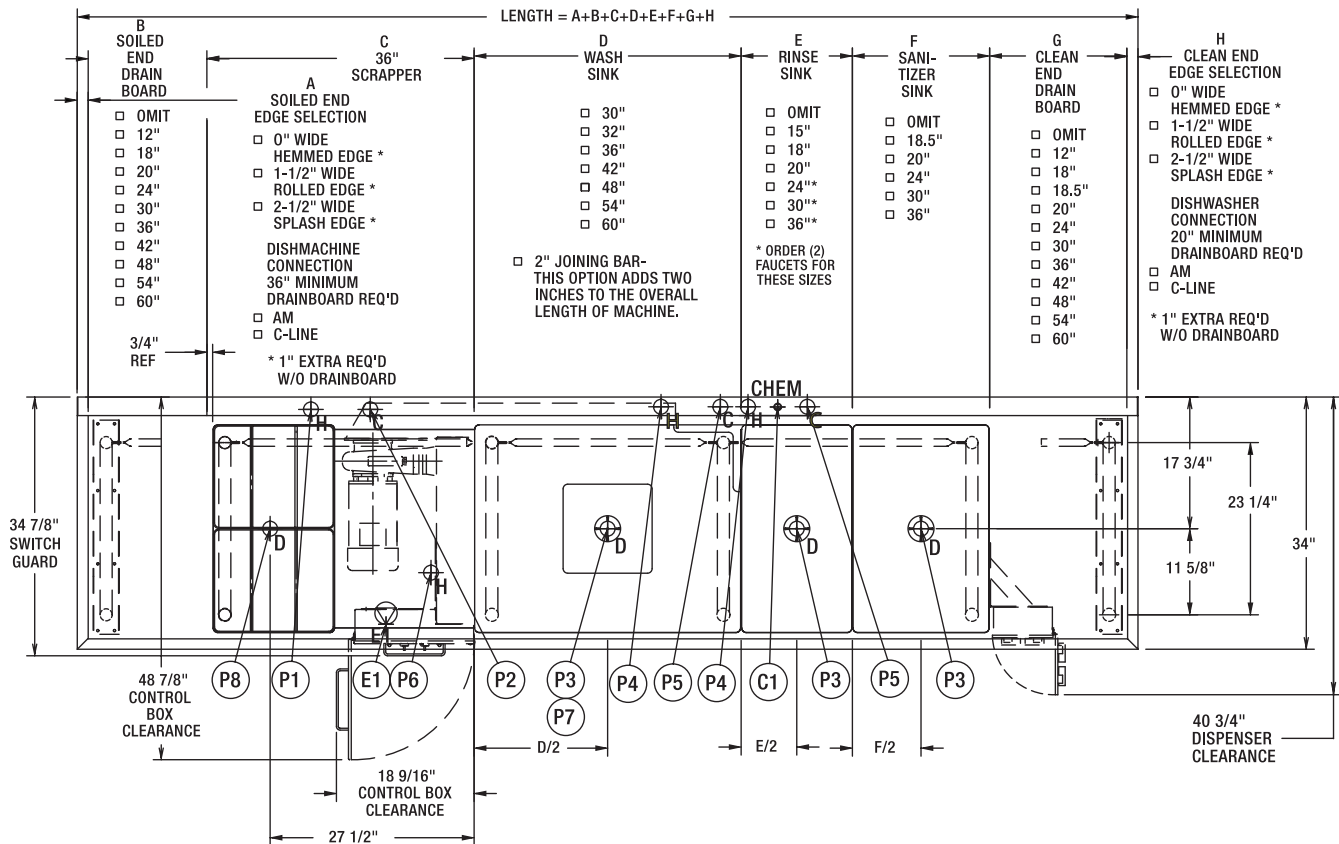


TURBOWASH II WITH 36" SCRAPER

HOBART

701 S Ridge Avenue, Troy, OH 45374
1-888-4HOBART • www.hobartcorp.com

DETAILS AND DIMENSIONS



749867
TurboWash II
W/36" SCRAPER
HIGH VOLUME
L-R OPERATION
REV. F



701 S Ridge Avenue, Troy, OH 45374
1-888-4HOBART • www.hobartcorp.com

TURBOWASH II WITH 36" SCRAPPER

WARNING

ELECTRICAL AND GROUNDING CONNECTIONS
MUST COMPLY WITH THE APPLICABLE
PORTIONS OF THE NATIONAL ELECTRICAL
CODE AND/OR OTHER LOCAL ELECTRICAL CODES.

PLUMBING CONNECTIONS MUST COMPLY
WITH APPLICABLE SANITARY, SAFETY,
AND PLUMBING CODES.

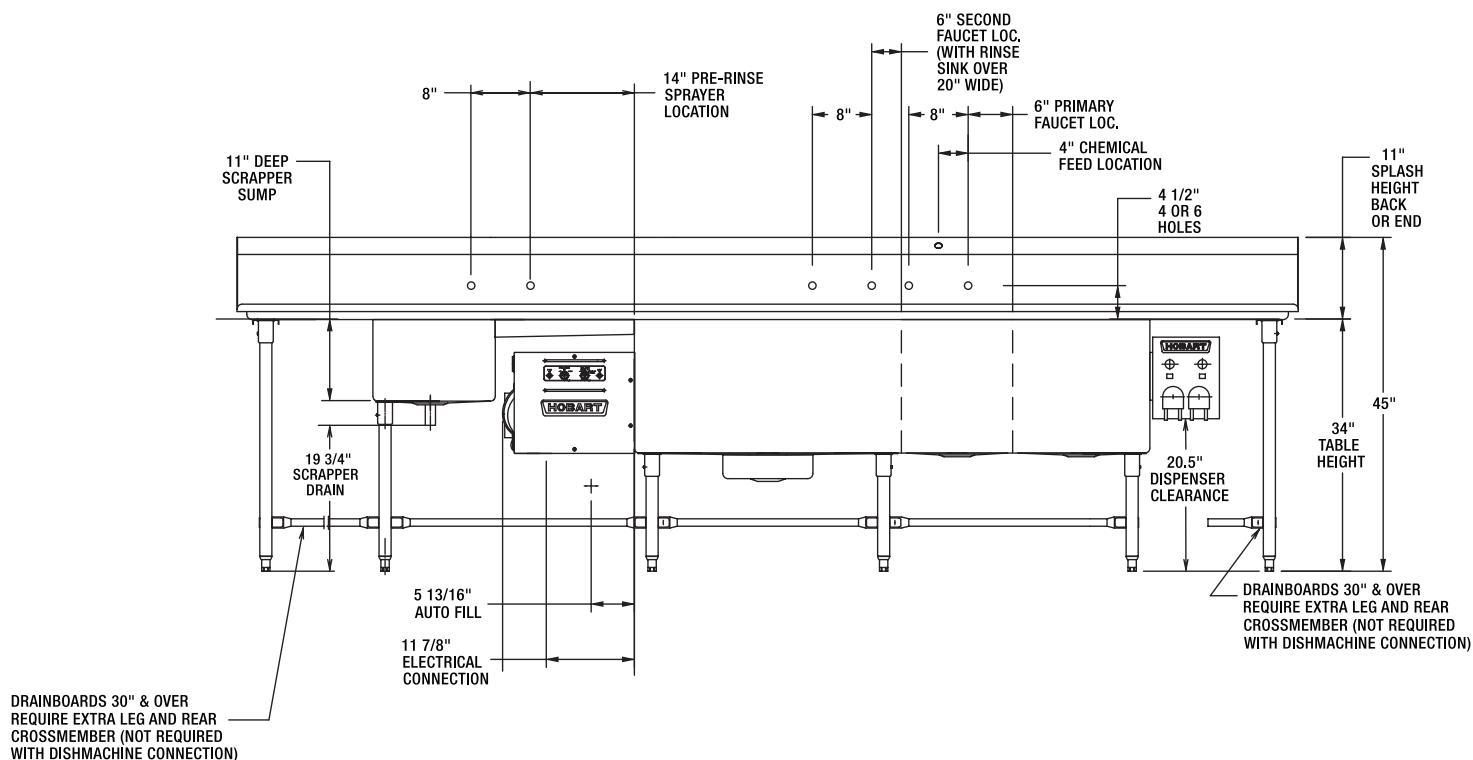
LEGEND CONNECTION INFORMATION (*AFF - ABOVE FINISHED FLOOR)

- C1 CHEMICAL FEED CONNECTION: (OVER PRIMARY FAUCET), 1" DIA. HOLE FOR HOSE GROMMET, 43-7/8" AFF.
- E1 ELECTRICAL CONNECTION: MOTORS AND CONTROLS (INCLUDES ELECTRIC HEAT WHEN ORDERED), 3/4" CONDUIT, 16" AFF.
- P1 HOT WATER CONNECTION: PRE-RINSE SPRAYER (WHEN ORDERED), 1/2" FPT, 36-15/16" AFF.
- P2 COLD WATER CONNECTION: PRE-RINSE SPRAYER (WHEN ORDERED), 1/2" FPT, 36-15/16" AFF.
- P3 SINK DRAINS: (1-3 CONNECTIONS-WHEN ORDERED), 2" MPT, 11-3/16" AFF.
- P4 HOT WATER CONNECTION: MIXING FAUCET (WHEN ORDERED), 3/4" FPT, 36-5/8" AFF.
- P5 COLD WATER CONNECTION: MIXING FAUCET (WHEN ORDERED), 3/4" FPT, 36-5/8" AFF.
- P6 HOT WATER CONNECTION: AUTO FILL (WHEN ORDERED), 3/4" FPT, 11-1/2" AFF.
- P7 WASH SINK WITH STRAINER DRAIN CONNECTION (WHEN ORDERED), 2" MPT, 8-1/16" AFF.
- P8 SCRAPPER DRAIN: (WHEN ORDERED) 1-1/2" MPT, 19-3/4" AFF.

ALL DIMENSIONS TAKEN FROM FINISHED FLOOR
LINE MAY INCREASE 3/4" OR DECREASE 1/2"
DEPENDING ON LEG ADJUSTMENT.
RECOMMENDED 7-3/4" AFF WALL DRAIN LOCATION.

| TurboWash WITH ELECTRIC HEAT | | | |
|---------------------------------|---------------|---|--|
| ELEC. SPECS. | RATED AMPS | MINIMUM SUPPLY CIRCUIT CONDUCTOR AMPACITY | MAXIMUM OVERCURRENT PROTECTIVE DEVICE |
| 208-240/60/3 | 17.0 | 20 | 20 |
| 480/60/3 | 10.2 | 15 | 15 |

| TurboWash (W/O ELECTRIC HEAT) | | | |
|----------------------------------|---------------|---|--|
| ELEC. SPECS. | RATED AMPS | MINIMUM SUPPLY CIRCUIT CONDUCTOR AMPACITY | MAXIMUM OVERCURRENT PROTECTIVE DEVICE |
| 208-240/60/3 | 5.6 | 15 | 15 |
| 480/60/3 | 5.1 | 15 | 15 |

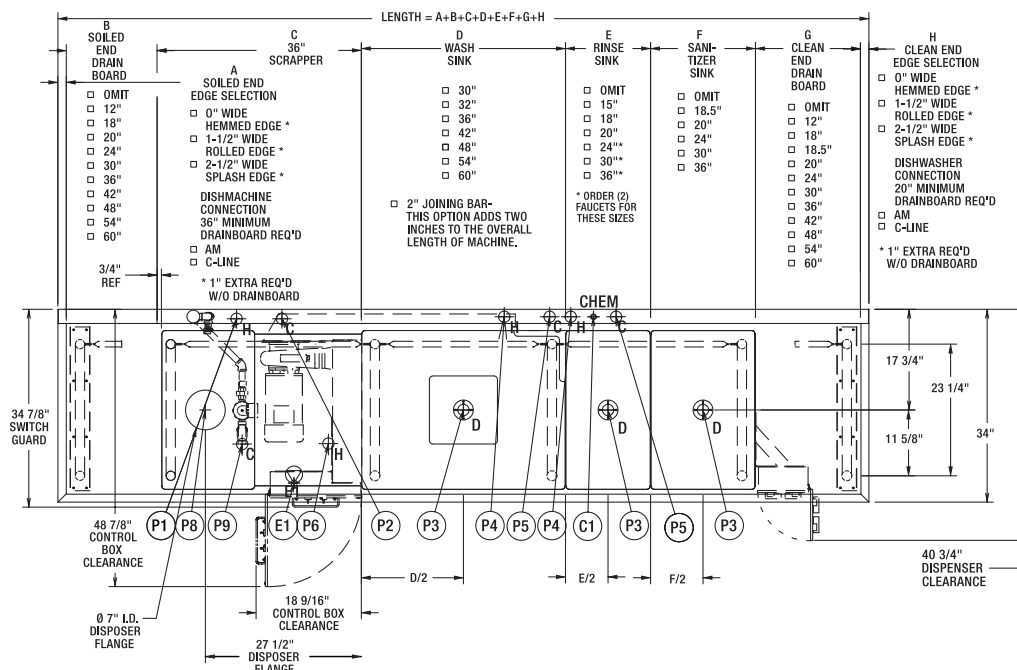


TURBOWASH II WITH DISPOSER

HOBART

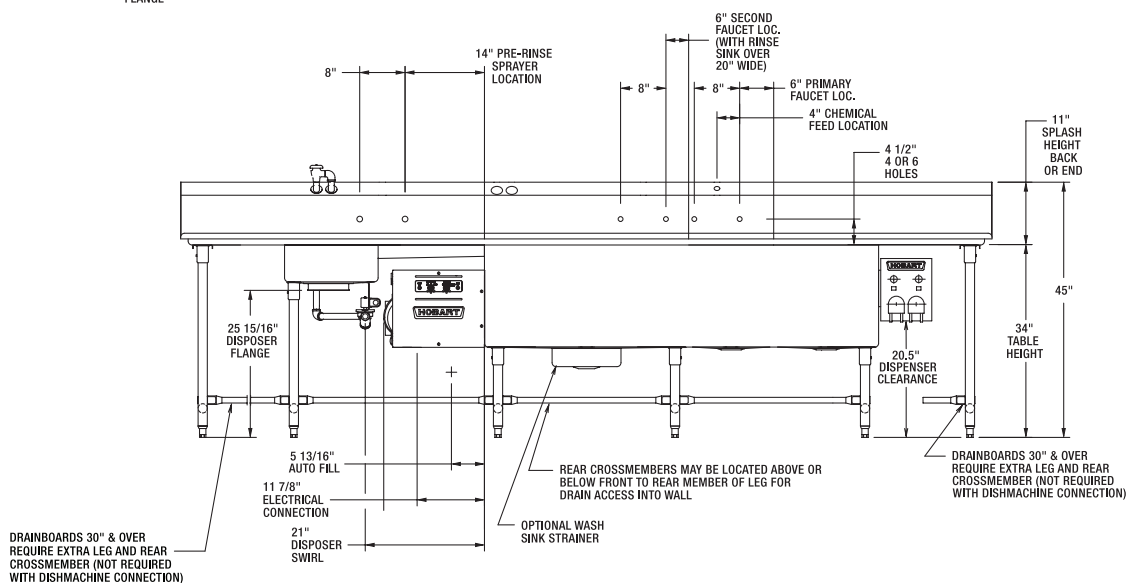
701 S Ridge Avenue, Troy, OH 45374
1-888-4HOBART • www.hobartcorp.com

DETAILS AND DIMENSIONS



LEGEND CONNECTION INFORMATION (*AFF - ABOVE FINISHED FLOOR)

- C1 CHEMICAL FEED CONNECTION: (OVER PRIMARY FAUCET), 1" DIA. HOLE FOR HOSE GROMMET, 43-7/8" AFF.
 - E1 ELECTRICAL CONNECTION: MOTORS AND CONTROLS (INCLUDES ELECTRIC HEAT WHEN ORDERED), 3/4" CONDUIT, 16" AFF.
 - P1 HOT WATER CONNECTION: PRE-RINSE SPRAYER (WHEN ORDERED), 1/2" FPT, 36-15/16" AFF.
 - P2 COLD WATER CONNECTION: PRE-RINSE SPRAYER (WHEN ORDERED), 1/2" FPT, 36-15/16" AFF.
 - P3 SINK DRAINS: (1-3 CONNECTIONS-WHEN ORDERED), 2" MPT, 11-3/16" AFF.
 - P4 HOT WATER CONNECTION: MIXING FAUCET (WHEN ORDERED), 3/4" FPT, 36-5/8" AFF.
 - P5 COLD WATER CONNECTION: MIXING FAUCET (WHEN ORDERED), 3/4" FPT, 36-5/8" AFF.
 - P6 HOT WATER CONNECTION: AUTO FILL (WHEN ORDERED), 3/4" FPT, 11-1/2" AFF.
 - P7 WASH SINK WITH STRAINER DRAIN CONNECTION (WHEN ORDERED), 2" MPT, 8-1/16" AFF.
 - P9 COLD WATER CONNECTION: DISPOSER SWIRL (WHEN ORDERED), 3/4" FPT, 21-5/16" AFF.
- ALL DIMENSIONS TAKEN FROM FINISHED FLOOR LINE MAY INCREASE 3/4" OR DECREASE 1/2" DEPENDING ON LEG ADJUSTMENT. RECOMMENDED 7-3/4" AFF WALL DRAIN LOCATION.



WARNING

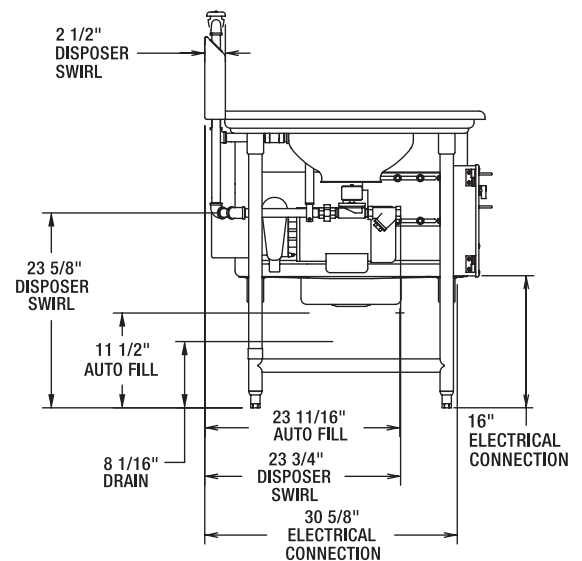
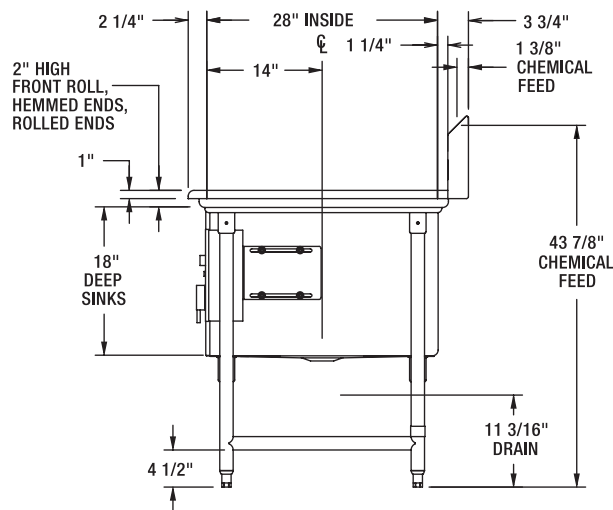
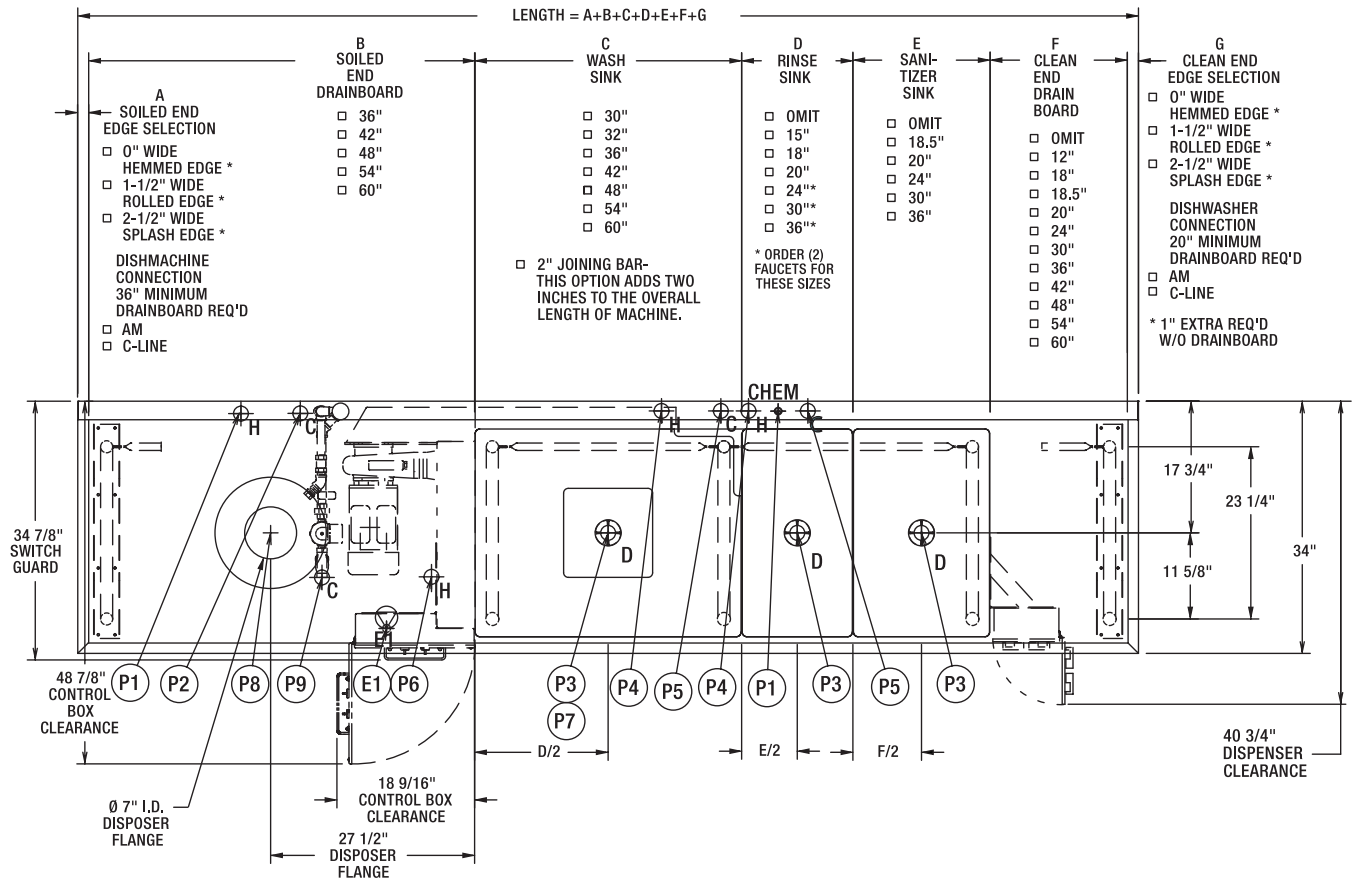
ELECTRICAL AND GROUNDING CONNECTIONS MUST COMPLY WITH THE APPLICABLE PORTIONS OF THE NATIONAL ELECTRICAL CODE AND/OR OTHER LOCAL ELECTRICAL CODES.

PLUMBING CONNECTIONS MUST COMPLY WITH APPLICABLE SANITARY, SAFETY, AND PLUMBING CODES.

749868
TurboWash II
W/36" DISPOSER
SCRAPPER
(W/O DISPOSER CONTROLS)
L-R OPERATION
REV. F

| TurboWash WITH ELECTRIC HEAT | | | |
|---------------------------------|------------|---|---------------------------------------|
| ELEC. SPECS. | RATED AMPS | MINIMUM SUPPLY CIRCUIT CONDUCTOR AMPACITY | MAXIMUM OVERCURRENT PROTECTIVE DEVICE |
| 208-240/60/3 | 17.0 | 20 | 20 |
| 480/60/3 | 10.2 | 15 | 15 |

| TurboWash (W/O ELECTRIC HEAT) | | | |
|----------------------------------|------------|---|---------------------------------------|
| ELEC. SPECS. | RATED AMPS | MINIMUM SUPPLY CIRCUIT CONDUCTOR AMPACITY | MAXIMUM OVERCURRENT PROTECTIVE DEVICE |
| 208-240/60/3 | 5.6 | 15 | 15 |
| 480/60/3 | 5.1 | 15 | 15 |



749870
TurboWash II
W/DISPOSER
CONE/DRAINBOARD
(W/O DISPOSER CONTROLS)
L-R OPERATION
REV. F

TURBOWASH II WITH DISPOSER



701 S Ridge Avenue, Troy, OH 45374
1-888-4HOBART • www.hobartcorp.com

DETAILS AND DIMENSIONS

LEGEND CONNECTION INFORMATION (*AFF - ABOVE FINISHED FLOOR)

- C1 CHEMICAL FEED CONNECTION: (OVER PRIMARY FAUCET), 1" DIA. HOLE FOR HOSE GROMMET, 43-7/8" AFF.
- E1 ELECTRICAL CONNECTION: MOTORS AND CONTROLS (INCLUDES ELECTRIC HEAT WHEN ORDERED), 3/4" CONDUIT, 16" AFF.
- P1 HOT WATER CONNECTION: PRE-RINSE SPRAYER (WHEN ORDERED), 1/2" FPT, 36-15/16" AFF.
- P2 COLD WATER CONNECTION: PRE-RINSE SPRAYER (WHEN ORDERED), 1/2" FPT, 36-15/16" AFF.
- P3 SINK DRAINS: (1-3 CONNECTIONS-WHEN ORDERED), 2" MPT, 11-3/16" AFF.
- P4 HOT WATER CONNECTION: MIXING FAUCET (WHEN ORDERED), 3/4" FPT, 36-5/8" AFF.
- P5 COLD WATER CONNECTION: MIXING FAUCET (WHEN ORDERED), 3/4" FPT, 36-5/8" AFF.
- P6 HOT WATER CONNECTION: AUTO FILL (WHEN ORDERED), 3/4" FPT, 11-1/2" AFF.
- P7 WASH SINK WITH STRAINER DRAIN CONNECTION (WHEN ORDERED), 2" MPT, 8-1/16" AFF.
- P8 DISPOSER FLANGE CONNECTION: DISPOSER FLANGE (WHEN ORDERED), 7" I.D., 27-3/8" AFF.
- P9 COLD WATER CONNECTION: DISPOSER SWIRL, (WHEN ORDERED), 3/4" FPT, 23-5/8" AFF.

ALL DIMENSIONS TAKEN FROM FINISHED FLOOR LINE MAY INCREASE 3/4" OR DECREASE 1/2" DEPENDING ON LEG ADJUSTMENT.

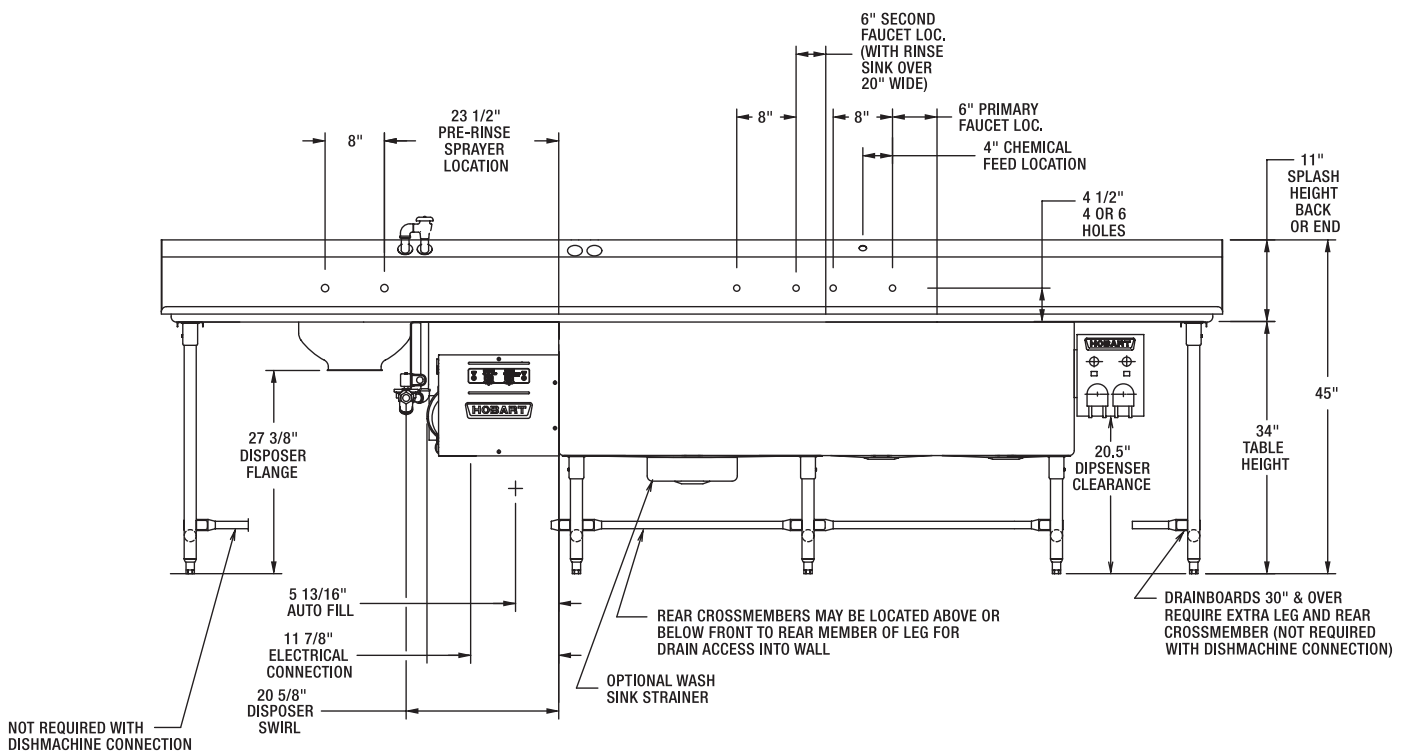
WARNING

ELECTRICAL AND GROUNDING CONNECTIONS MUST COMPLY WITH THE APPLICABLE PORTIONS OF THE NATIONAL ELECTRICAL CODE AND/OR OTHER LOCAL ELECTRICAL CODES.

PLUMBING CONNECTIONS MUST COMPLY WITH APPLICABLE SANITARY, SAFETY, AND PLUMBING CODES.

| TurboWash WITH ELECTRIC HEAT | | | |
|---------------------------------|------------|---|---------------------------------------|
| ELEC. SPECS. | RATED AMPS | MINIMUM SUPPLY CIRCUIT CONDUCTOR AMPACITY | MAXIMUM OVERCURRENT PROTECTIVE DEVICE |
| 208-240/60/3 | 17.0 | 20 | 20 |
| 480/60/3 | 10.2 | 15 | 15 |

| TurboWash (W/O ELECTRIC HEAT) | | | |
|----------------------------------|------------|---|---------------------------------------|
| ELEC. SPECS. | RATED AMPS | MINIMUM SUPPLY CIRCUIT CONDUCTOR AMPACITY | MAXIMUM OVERCURRENT PROTECTIVE DEVICE |
| 208-240/60/3 | 5.6 | 15 | 15 |
| 480/60/3 | 5.1 | 15 | 15 |



As continued product improvement is a policy of Hobart, specifications are subject to change without notice.