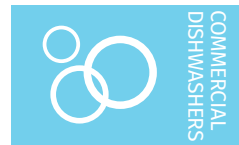




Project \_\_\_\_\_  
AIA # \_\_\_\_\_ SIS # \_\_\_\_\_  
Item # \_\_\_\_\_ Quantity \_\_\_\_\_ C.S.I. Section 114000



## PWV

### Pot, Pan & Utensil Washer



### SPECIFIER STATEMENT

Specified dishwasher will be Hobart PWV Pot/Pan/Utensil Washer, front loading with single piece vertical lift door, (12) pan capacity, over/under rotating arms, 2/4/6 minute adjustable cycles, up to (20) racks/hour, includes: (1) flat grids, (1) tray racks & (1) flat bottom rack, pre-rinse spray hose, sanitizing with Sense-A-Temp™ 70° booster rise, vent fan control, drain pump, stainless steel construction, 208-240v/60/3-ph & 480v/60/3-ph, NSF, ENERGY STAR®.

**1 year parts and labor warranty.**

### STANDARD FEATURES

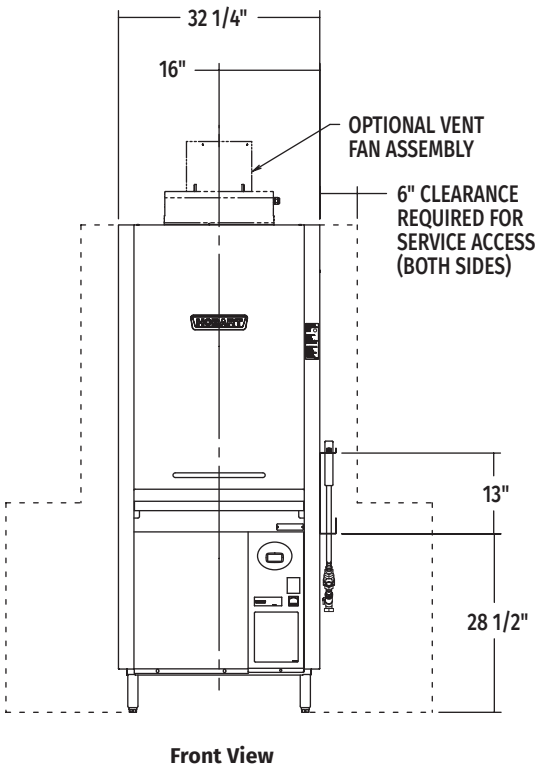
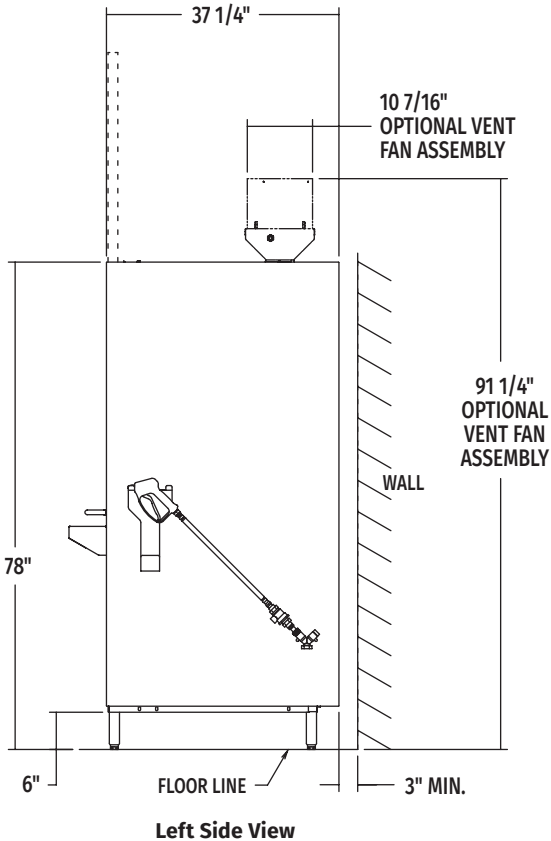
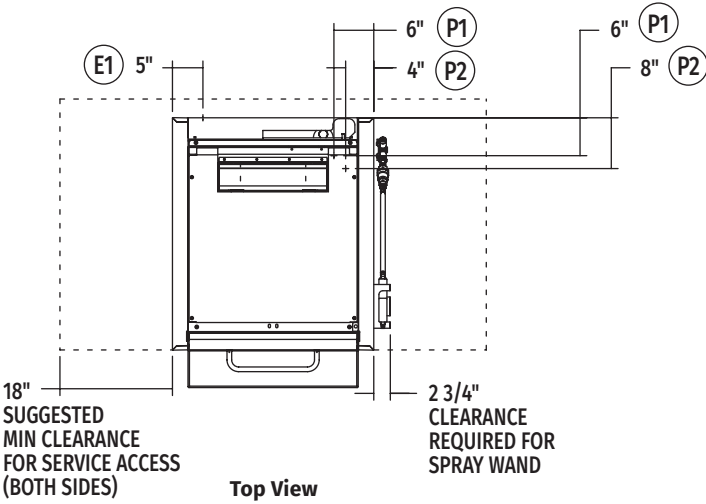
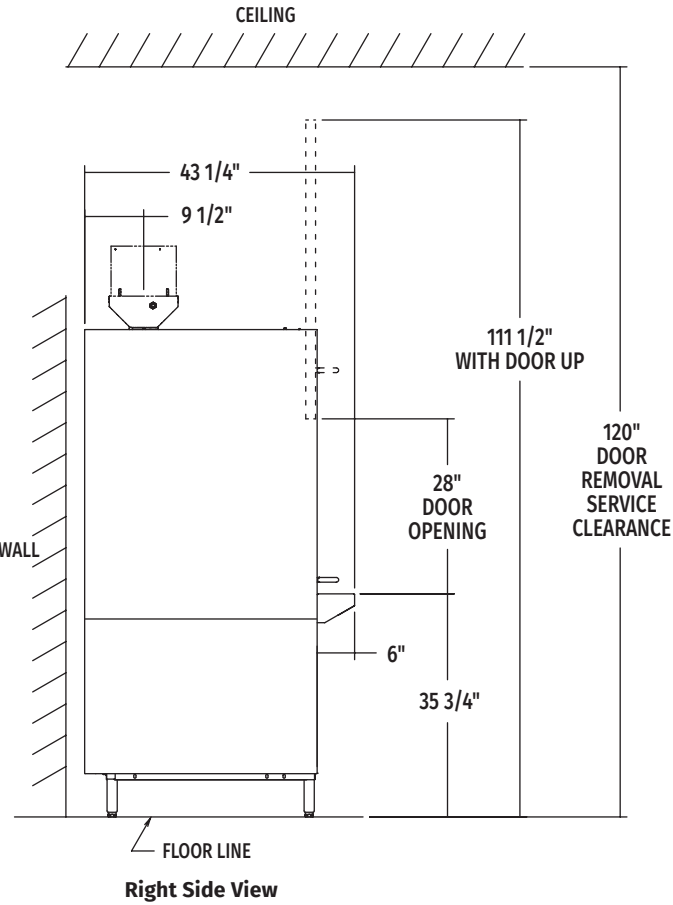
- + Timed wash cycles; racks per hour: 20 (2 minute wash), 12 (4 minute wash), 8 (6 minute wash)
- + 1.2 gallons of water per cycle
- + NSF Pot and Pan rated timed wash cycles for 2-4-6 minutes
- + Hot water sanitation machine
- + Sense-A-Temp™ booster heater capable of 70° rise
- + Front loading, single piece vertical lift door
- + Chamber accepts 102 full-sized sheet pans, or (1) 140 quart mixing bowl
- + Advanced service diagnostics
- + 16 gauge stainless steel deep drawn tank
- + Microcomputer controls with advanced digital cycle/temperature display
- + Two revolving upper and lower interchangeable anti-clogging wash arms and rinse arms
- + Removable stainless steel scrap screens and scrap basket
- + Corrosion resistant pump
- + Automatic pumped drain
- + Pumped rinse
- + 28"h x 26.19"w door opening
- + Automatic fill
- + Electric tank heat
- + Spray hose (12')
- + Rack size: 25.300"w x 29.657"d x 4.951"h

### OPTIONS & ACCESSORIES (Available at extra cost)

- ☐ Pressure regulator valve
- ☐ DWT-PW drain water tempering kit
- ☐ Steam pan rack
- ☐ Water hammer arrestor kit

PW SERIES – PWV

Approved by \_\_\_\_\_ Date \_\_\_\_\_ Approved by \_\_\_\_\_ Date \_\_\_\_\_



MODEL:  
PWV  
00-975043  
REV D



## LEGEND

Electrical Connections	
<b>E1</b>	Electrical connection (including electric heat) 1-1/4" conduit hole, 7-1/16" AFF.
Plumbing Connections	
<b>P1</b>	Hot water connection incoming: 110° F water minimum. 3/4" female garden hose fitting on 6' long hose supplied with machine. 7-3/4" AFF.
<b>P2</b>	Drain connection: 7/8" barb fitting, 27-1/2" AFF. 6' long 7/8" hose supplied with machine.
<b>NOTE:</b> Cold water connection at P2 (as needed when optional drain water tempering kit is included: 55-80°F recommended water, 1/2" MPT, 26-15/16" AFF.	

**WARNING:** Electrical and grounding connections must comply with the applicable portions of the National Electrical Code and/or other local codes.

Plumbing connections must comply with applicable sanitary, safety and plumbing codes. Drain and fill line configurations vary, some methods are shown on this drawings.

**Plumbing Notes:** Required flowing water pressure to the dishmachine is 15-65 PSIG. If pressures higher than 65 PSIG are present, a pressure regulating valve must be installed in the water line to the dishmachine (by others).

Recommended water hardness to be 3 grains or less for best results.

Pressure gauge not required on pumped rinse machines.

**Miscellaneous Notes:** Backflow prevention provided by NSF-approved air gap device.

Single point electrical connection machines.

All dimensions taken from floor line may increase 1-1/2" depending on leg adjustment.

## SPECIFICATIONS

### Capacities

Wash Time Settings (minutes) . . . . . 2, 4, 6  
Racks per Hour . . . . . 20 (2 min. wash), 12 (4 min. wash), 8 (6 min. wash)  
Tank Capacity – Gallons . . . . . 21

### Motor Horsepower

Wash . . . . . 4.0  
Rinse . . . . . 0.33

### Water Consumption

U.S. Gallons per Cycle . . . . . 1.2  
U.S. Gallons per Hour (maximum use) . . . . . 24  
Peak Drain Flow – U.S. Gallons . . . . . 18

### Temperatures °F

Wash . . . . . 150  
Rinse . . . . . 180  
Incoming Water Temperature (minimum recommended) . . . . . 110

### Heating

Tank Heat, electric (kW) . . . . . 16.4  
Electric Booster (kW) . . . . . 16.4

### Standard 20" x 20" (508 x 508) Rack Complement

Tray Rack (12 pan each) . . . . . 1  
Flat Grid . . . . . 1  
Flat Bottom . . . . . 1

Shipping Weight (approximate) . . . . . 685 lbs.

Crated Dimensions . . . . . 78.04"H x 34.86"W x 37.20"D

Electrical Specifications			
Voltage	Rated Amps	Minimum Supply Circuit Ampacity	Maximum Protective Device
208/60/3	47.6	60	60
240/60/3	53.0	70	70
480/60/3	28.6	35	35

Dishmachine not provided with internal GFCI protection.

Approximate Heat Gain to Space without Vent Hood	
Latent	Sensible
12,400	5,300