



# 2012 Dodge Ram 5500 4x2

## Service Truck W/Crane

### CHASSIS SPECS

#### UNIT INFORMATION

VIN: 3C7WDMBL0CG121823  
268,388 Miles  
4x2 Single Axle  
Hydraulic Brakes  
Hitch Receiver  
-Electric Connection  
Single Frame

#### CAB FEATURES

Standard Daycab  
Aerodynamic Mirrors  
City Horn

#### INTERIOR FEATURES

Mid Level Interior  
A/C Equipped  
Power Windows  
Power Door Locks  
High Back Driver Seat  
High Back Passenger Seat  
Cruise Control  
Tilt Steering Column  
AM/FM/CD  
Fold Down Center Console

### EQUIPMENT SPECS

#### GVWR

19,500 LBS.

#### FRONT AXLE

7000 LB. FAWR

#### REAR AXLES

13,500 LB. RAWR

#### REAR SUSPENSION

Leaf Spring

#### ENGINE

Cummins 6.7L  
Block Heater  
Horizontal Exhaust

#### TRANSMISSION

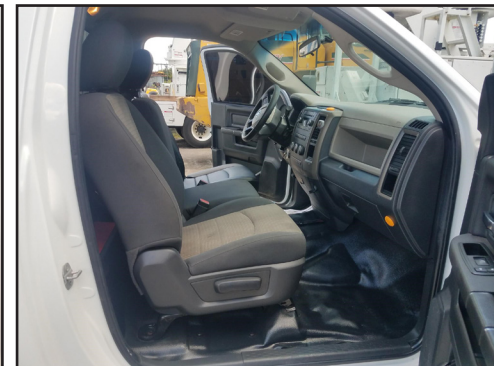
Automatic

#### TIRES/WHEELS

Front Tire: 225/70R19.5  
Front Wheel: Steel  
Rear Tire: 225/70R19.5  
Rear Wheel: Steel

Stellar 5521 Service Crane  
S/N: IG011A64  
5000 LB. Rated Capacity  
21 Ft. Telescopic Boom  
400 Degree Rotation  
Rear Hydraulic Outriggers

Compressor



888-684-8146 | [www.customtruck.com](http://www.customtruck.com)

ASK ABOUT THE CUSTOMIZED AND FLEXIBLE LEASING & FINANCING SOLUTIONS AVAILABLE FROM CUSTOM TRUCK CAPITAL

DISCLAIMER: Specifications are believed to be correct, but may contain errors and/or omissions. Pictures are representative and may not be identical.

PRICE: Call For Price  
STOCK#: TAM011  
EX WORKS: Tampa, FL

QUOTE NUMBER: P02.22-H\_19

EXPIRATION DATE: