



Custom Truck One Source

Kansas City, MO

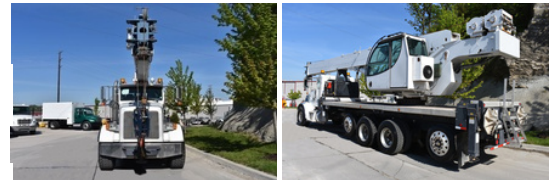
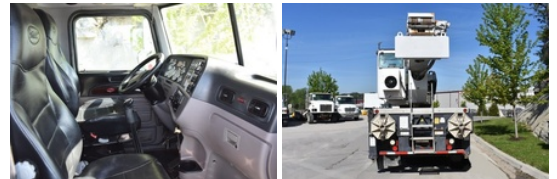
Phone: (816) 558-7290

<https://www.customtruck.com/locations>

Manitex 50128S 2014 Peterbilt 365

\$ 250,500

Stock UT39817 VIN 1NPSX7EX8ED220143



Detailed Specification

Engine Make	Cummins	Engine HP	500
Engine Model	ISX D	Transmission	Manual
Axle Config	10x4	Meter Reading	38658.0
FA Capacity	20000	Characteristic Type	50 Ton Crane
RA Capacity	46000	Crane Rating	50 Ton
Rear End Ratio	4.30	Outriggers	Hydraulic Out + Down
Tag Axle(s)	(1) 11,020		
Pusher Axle(s)	(1) 11,020		
Cab Type	Regular Cab		
Attached Body	50128S		
Wheelbase	292		

DISCLAIMER: Price quoted includes any applicable FET. Quoted price is Ex Works and does not include any freight / delivery charges, sales tax, titling fees, or registration fees. Specifications are believed to be correct but may contain errors and/or omissions. Pictures are representative and may not be identical. Description and Images © Custom Truck One Source