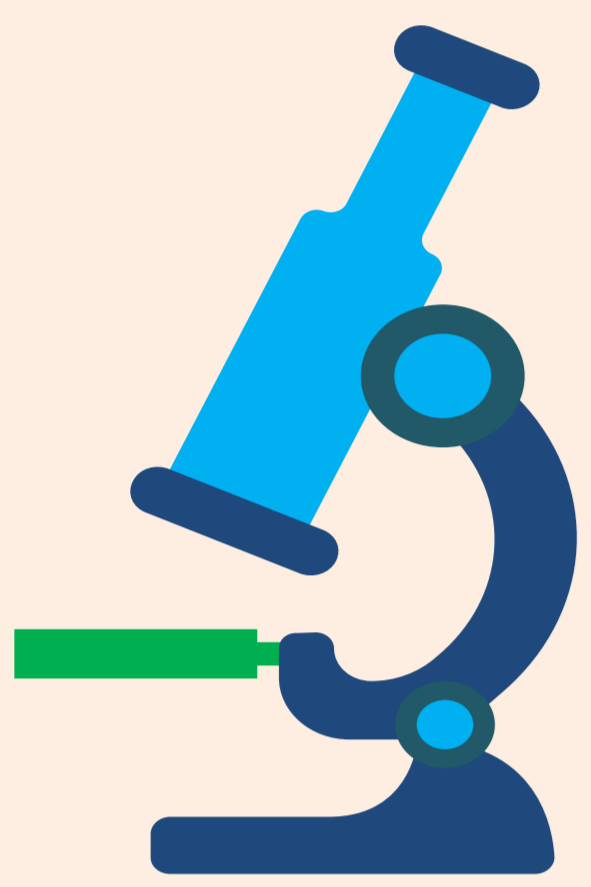


# RECRUIT IN 90 SECONDS

Leo Advisory Panel | Recruitment Committee | 2020-21

## Identify Potential Members



- Friends, Neighbours & Family
- School & College students
- Co-workers & Colleagues
- Young Entrepreneurs
- Relatives of Lions Members
- Social Service Enthusiasts
- Members of Similar Organizations
- Recently Relocated People

## Inquire

- Education / Profession
- Interests & Hobbies
- Family Background
- Future Plans

## Connect, Inform and Explain

- Organizational Structure
- Service Activities
- Leadership Development
- International Networking
- Wider Platform
- Strengthens Resume
- Easy Membership Process

## Share your own experience

- Lifelong Friendships
- Personal Growth
- Business Opportunities
- Sports Activities
- Event Management
- Visuals of Meetings & Conventions
- Membership Certificates & Awards
- Respect from Community



## Exchange Contact Details, Invite to upcoming events

