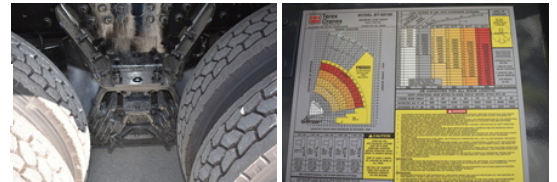


TEREX BT60100 2019 Peterbilt 348

\$ 225,000

Stock NT18481 VIN 2NP3LJ0X8KM262936



Detailed Specification

| | | | |
|-----------------------|-------------|----------------------------|--------------|
| Engine Make | Paccar | Engine HP | 350 |
| Engine Model | PX9 D | Transmission | Manual |
| Axle Config | 6x4 | Meter Reading | 42.0 |
| FA Capacity | 20000 | Characteristic Type | 30 Ton Crane |
| RA Capacity | 46000 | Crane Rating | 30 Ton |
| Rear End Ratio | 4.10 | | |
| Cab Type | Regular Cab | | |
| Attached Body | BT60100 | | |
| Wheelbase | 262 | | |