

HOBART701 S Ridge Avenue, Troy, OH 45374
1-888-4HOBART • www.hobartcorp.com**HC24EO ELECTRIC COUNTER
BOILERLESS/CONNECTIONLESS
STEAMER****HOBART****HC24EO ELECTRIC COUNTER BOILERLESS/CONNECTIONLESS STEAMER****STANDARD FEATURES**

- 304 series stainless steel exterior.
- Stainless steel cooking compartment.
- Generator pan is stainless steel with stamped water level line.
- Efficient steam generating system, requires no water connections, drain connection optional.
- Solid sheathed tubular elements (8 KW)(12 KW) embedded in 1" thick cast aluminum sealed to pan bottom with thermal transfer compound for even heat distribution.
- Controls include three position control switch (timed cooking / Off / constant cooking). 60 minute timer.
- Heavy duty doors and door latch mechanisms.
- HC24EO3 is shipped for 208/60-50/3 electrical service. Can be field converted to 208/60-50/1 and 240/60-50/3 and 240/60-50/1.
- HC24EO5 is shipped for 208 or 240 volt, 60 Hz, 1 or 3 phase. Phase is field convertible.
- One year limited parts and labor warranty.

OPTIONS

- 480 volt, 60 Hz, 3 phase power supply, includes step down transformer.

ACCESSORIES

- 4" counter legs.
- 12" x 20" stainless steel pans:
1" deep (solid) (perforated) Qty. _____
2½" deep (solid) (perforated) Qty. _____
4" deep (solid) (perforated) Qty. _____
- Stainless steel pan cover. Qty. _____
- Open leg stand.
- 28" open leg stand with pan slides 24"w x 28"h.
- 34" open leg stand with pan slides 24"w x 34"h.
- Set of two universal pan slides for open leg stand.

MODELS

- HC24EO3 – 3 Pan Capacity, 8 KW input
- HC24EO5 – 5 Pan Capacity, 12 KW input

ACCESSORIES (Continued)

- Caster for open leg stand
- Stand sliding shelf.
- Stacking kit for two units with hardware, counter mount.
- Single point electrical connection kit 3-phase only
- Floor legs, 6".
- Floor caster, 6".
- Pull-out 12" x 20" sliding shelf (cooking compartment). Qty. _____.
- Cord and plug set.

Specifications, Details and Dimensions on Reverse Side.



HC24EO ELECTRIC COUNTER BOILERLESS/CONNECTIONLESS STEAMER



701 S Ridge Avenue, Troy, OH 45374
1-888-4HOBART • www.hobartcorp.com

SPECIFICATIONS

EQUIPMENT CLEARANCE: Rear: 6", Right and Left Side: 0"

PAN CAPACITIES

MODEL	1" Deep	2½" deep	4" deep
HC24EO3	6	3	2
HC24EO5	10	5	3

WATER QUALITY STATEMENT: The fact that a water supply is potable is no guarantee that it is suitable for steam generation. Your water supply must be within these general guidelines:

HARDNESS*	less than 3 grains
SILICA	less than 13 ppm
TOTAL CHLORIDE	less than 4.0 ppm
pH RANGE	7-8
UN-DISSOLVED SOLIDS	less than 5 microns

* 17.1 ppm = 1 grain of hardness

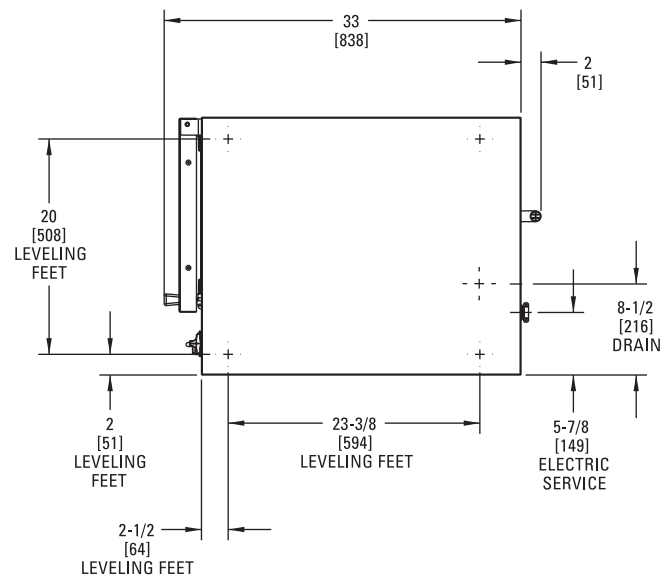
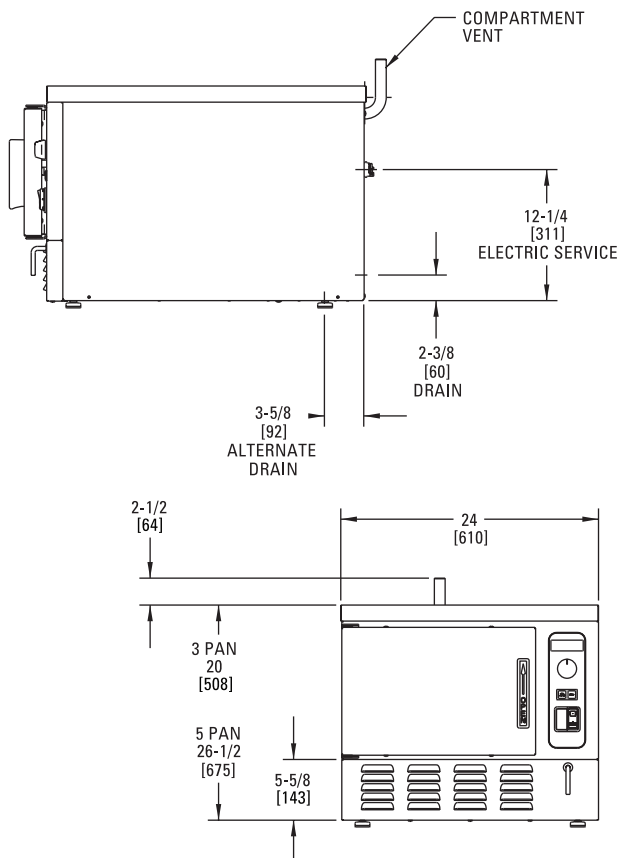
Other factors affecting steam generation are iron content, amount of chloridation and dissolved gases. Water supplies vary from state to state and from locations within a state. Therefore it is necessary that the local water treatment specialist be consulted before the installation of any steam generating equipment.

NOTE:

- Dimensions which locate the above connections have a tolerance of + or -3" (+ or -75 mm).
- It is the responsibility of the owner and installer to comply with local codes for installation.
- The installer may be required to provide means to reduce boiler drain water temperature to 140°F or less.
- If a drain line is connected to the steamer, the material must be suitable for 212°F water. If no drain plumbing is connected, a suitable catch pan must be used.
- This appliance is manufactured for commercial installation only and is not intended for home use.

MODEL	VOLTS	WATTS	AMPS	
			1-PHASE	3-PHASE
HC24EO3	208	8000	38.5	22.2
	240	8000	33.3	19.2
HC24EO5	208	12000	57.7	33.3
	240	12000	50.0	28.9
	480	12000	25.0	14.4

DETAILS AND DIMENSIONS



As continued product improvement is a policy of Hobart, specifications are subject to change without notice.