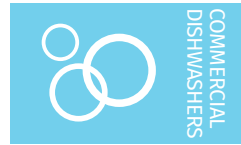




Project \_\_\_\_\_  
AIA # \_\_\_\_\_ SIS # \_\_\_\_\_  
Item # \_\_\_\_\_ Quantity \_\_\_\_\_ C.S.I. Section 114000



## FT1000 advansys ELECTRIC Flight-Type Dishwashing Machine



LA Research Report M660004

Complies with EPA Reduction of Lead in Drinking Water Act 2014

Meets requirements of ASSE Standard No. 1004

### SPECIFIER STATEMENT

The specified machine shall be a Hobart Ventless flight type dish machine, 58 gallons of final rinse consumption per hour, with dual rinse, hinged & insulated doors, 30" wide conveyor belt, sliding wash arms without caps, & microprocessor controls with ventless technology, auto clean, auto delime, energy recovery and automatic soil removal system (ASR), blower dryer, water softener.

### STANDARD FEATURES

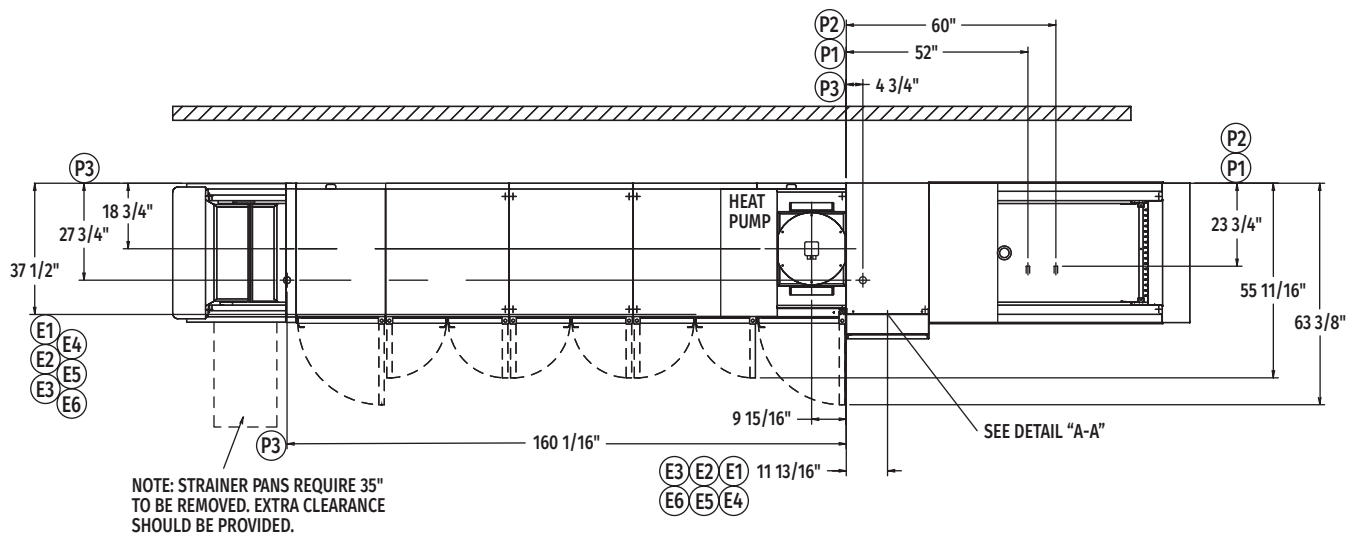
- + Left to Right or Right to Left direction
- + Pumped rinse system (pressure gauge not required)
- + Water usage 58 gph
- + Digital controls with machine diagnostics
- + Low temperature alert
- + Hinged insulated cabinet-style doors
- + 31" access on prewash, power wash and power rinse chambers; 20" access on dual rinse and ASR chambers
- + Start and stop switches at both ends
- + Doors open indicator
- + Drains open indicator
- + Door interlocks
- + 3½ H.P. prewash, 4 H.P. power wash and power rinse pump motors, all TEFC
- + Capless auto clean wash arms
- + Easy to remove stainless steel scrap pans and baskets
- + 30" wide conveyor belt
- + Dual rinse
- + Automatic soil removal system (ASR)
- + Auto clean
- + Auto delime
- + Ventless technology
- + Energy recovery
- + Front and rear panels
- + Variable speed conveyor
- + Electric booster heater
- + Configurable drain to load or unload
- + Blower dryer
- + Advansys water treatment system

### OPTIONS & ACCESSORIES (Available at extra cost)

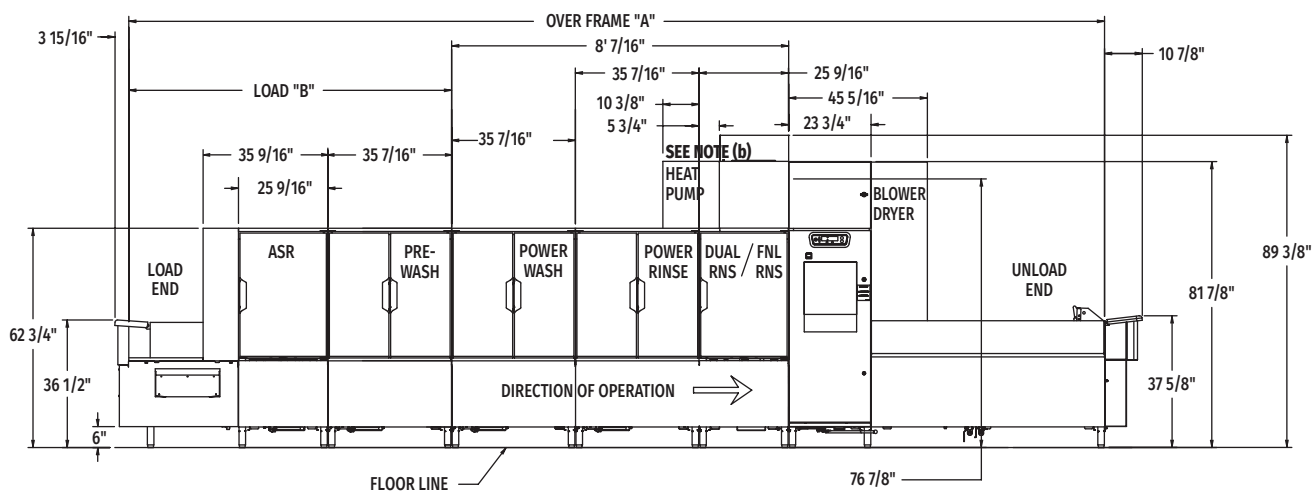
- ☐ Insulated split, vertical slide-up doors
- ☐ Multiple conveyor choices
- ☐ Factory mounted circuit breakers
- ☐ Correctional packages
- ☐ Flanged feet
- ☐ Water hammer arrestor/PRV (installed by others)
- ☐ Drain water tempering kit (installed by others)

FT SERIES – FT1000 advansys ELECTRIC

Approved by \_\_\_\_\_ Date \_\_\_\_\_ Approved by \_\_\_\_\_ Date \_\_\_\_\_



Top View Left to Right



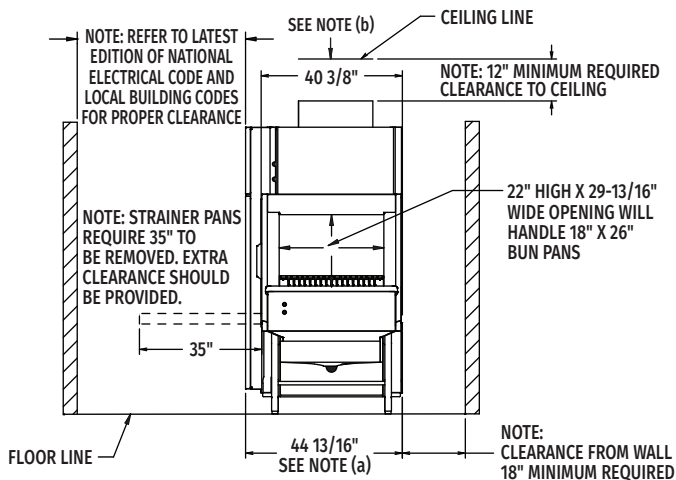
Front View Left to Right

Note: Control box electrical connections – see page 5.

MODEL NO.	"A"	"B"	"C"
FT1023 (7.5'-8'-7.5')	23' 3-1/2"	7' 8-1/2"	7' 6-1/2"
FT1024 (8.5'-8'-7.5')	24' 3-1/4"	8' 8-1/4"	7' 6-1/2"
FT1025 (9.5'-8'-7.5')	25' 3-3/32"	9' 8-3/32"	7' 6-1/2"
FT1025 (7.5'-8'-9')	24' 11-1/4"	7' 8-1/2"	9' 2-1/4"
FT1026 (8.5'-8'-9')	25' 11"	8' 8-1/4"	9' 2-1/4"
FT1027 (9.5'-8'-9')	26' 10-27/32"	9' 8-3/32"	9' 2-1/4"
FT1027 (7.5'-8'-11')	26' 10-7/8"	7' 8-1/2"	11' 1-7/8"
FT1028 (8.5'-8'-11')	27' 10-5/8"	8' 8-1/4"	11' 1-7/8"
FT1029 (9.5'-8'-11')	28' 10-15/32"	9' 8-3/32"	11' 1-7/8"
FT1030 (7.5'-8'-15')	30' 6-3/16"	7' 8-1/2"	14' 9-3/16"
FT1031 (8.5'-8'-15')	31' 5-15/16"	8' 8-1/4"	14' 9-3/16"
FT1032 (9.5'-8'-15')	32' 5-25/32"	9' 8-3/32"	14' 9-3/16"
FT1032 (7.5'-8'-17')	32' 5-3/4"	7' 8-1/2"	16' 8-3/4"
FT1033 (8.5'-8'-17')	33' 5-1/2"	8' 8-1/4"	16' 8-3/4"
FT1034 (9.5'-8'-17')	34' 5-11/32"	9' 8-3/32"	16' 8-3/4"

Note: Overall length of machine is Dimension "A" + 14-13/16"

MODEL:  
FT1000 ADVANSYS  
ELECTRIC  
L-R OPERATION  
00-949509  
REV D



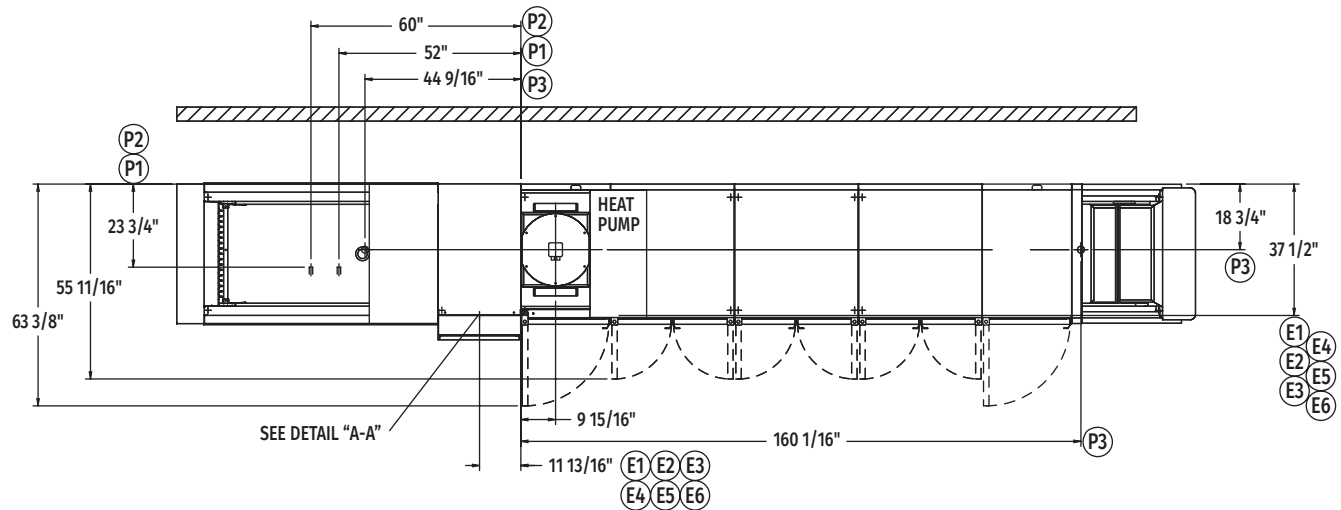
Back/Unload End



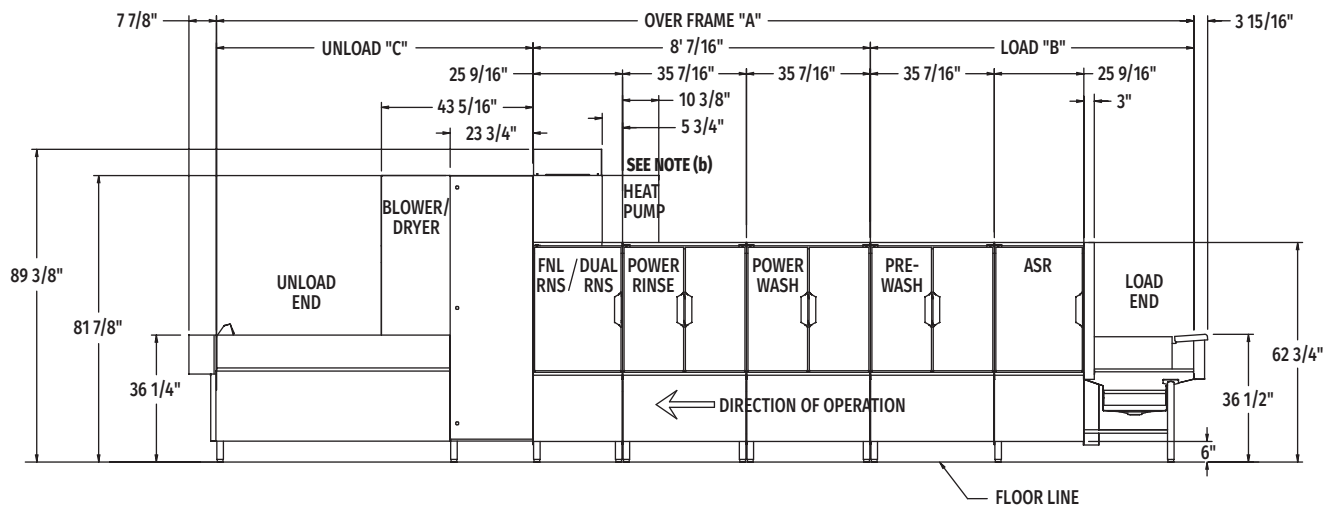
# FT1000 advansys ELECTRIC

## Flight-Type Dishwashing Machine

(Right to Left)



Top View Right to Left

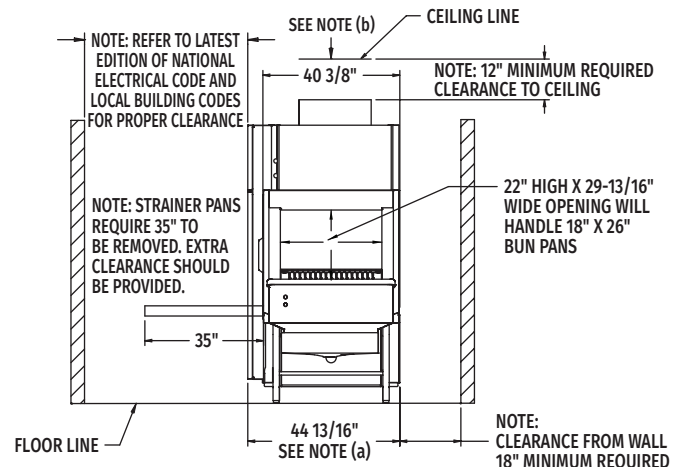


Front View Right to Left

**Note:** Control box electrical connections – see page 5.

MODEL NO.	“A”	“B”	“C”
FT1023 (7.5'-8'-7.5')	23' 3-1/2"	7' 8-1/2"	7' 6-1/2"
FT1024 (8.5'-8'-7.5')	24' 3-1/4"	8' 8-1/4"	7' 6-1/2"
FT1025 (9.5'-8'-7.5')	25' 3-3/32"	9' 8-3/32"	7' 6-1/2"
FT1025 (7.5'-8'-9')	24' 11-1/4"	7' 8-1/2"	9' 2-1/4"
FT1026 (8.5'-8'-9')	25' 11"	8' 8-1/4"	9' 2-1/4"
FT1027 (9.5'-8'-9')	26' 10-27/32"	9' 8-3/32"	9' 2-1/4"
FT1027 (7.5'-8'-11')	26' 10-7/8"	7' 8-1/2"	11' 1-7/8"
FT1028 (8.5'-8'-11')	27' 10-5/8"	8' 8-1/4"	11' 1-7/8"
FT1029 (9.5'-8'-11')	28' 10-15/32"	9' 8-3/32"	11' 1-7/8"
FT1030 (7.5'-8'-15')	30' 6-3/16"	7' 8-1/2"	14' 9-3/16"
FT1031 (8.5'-8'-15')	31' 5-15/16"	8' 8-1/4"	14' 9-3/16"
FT1032 (9.5'-8'-15')	32' 5-25/32"	9' 8-3/32"	14' 9-3/16"
FT1032 (7.5'-8'-17')	32' 5-3/4"	7' 8-1/2"	16' 8-3/4"
FT1033 (8.5'-8'-17')	33' 5-1/2"	8' 8-1/4"	16' 8-3/4"
FT1034 (9.5'-8'-17')	34' 5-11/32"	9' 8-3/32"	16' 8-3/4"

**Note:** Overall length of machine is Dimension “A” + 14-13/16"



Back/Unload End

MODEL:  
FT1000 ADVANSYS  
ELECTRIC  
R-L OPERATION  
00-949508  
REV B



## LEGEND

Electrical Connections	
E1	Electric connection for 1TB with or without circuit breakers. 79-1/8" AFF.
E2	Electric connection for 2TB without circuit breakers. 79-1/8" AFF.
E3	Electric connection for 3TB without circuit breakers. 79-1/8" AFF.
E4	Electric connection for 4TB without circuit breakers. 79-1/8" AFF.
E5	Electric connection for 5TB without circuit breakers. 79-1/8" AFF.
E6	Electric connection for 2TB with circuit breakers. 79-1/8" AFF.
Plumbing Connections	
P1	Common hot water connection (automatic fill) 110°F water minimum, 1" FPT, 5-1/2" AFF. See notes (b) and (d).
P2	Common cold water connection, 55°F minimum, 1" FPT, 5-1/2" AFF. See notes (c) and (d).
P3	Drain connection: May be drained to either end of unit. Default location is drain to unload unless otherwise indicated. 2" FPT. 7" AFF.

## SERVICE CONNECTIONS WITH CIRCUIT BREAKERS (2) SERVICE CONNECTIONS AS SHOWN BELOW

E1	Motors, Controls, Power Rinse & Booster Heat (TB1) (1) Service Connection as Shown Below			
Voltage		Rated Amps	Minimum Supply Circuit Ampacity	Maximum Protective Device
208/60/3		149	200	200
240/60/3		142	200	200
480/60/3		76	100	100
E6	B/D Blowers, Wash Tank Auxiliary Heat, Dual Rinse Heat & Heat Pump Compressor (2TB) (1) Service Connection as Shown Below			
Voltage		Rated Amps	Minimum Supply Circuit Ampacity	Maximum Protective Device
208/60/3		109.9	150	150
240/60/3		106.3	150	150
480/60/3		52.6	70	70

**WARNING:** Plumbing and electrical connections should be made by qualified personnel who will observe all the applicable plumbing, sanitary, safety codes and National Electrical Code.

### General Notes:

(a) The control box is attached to the center section and is rotated 90 degrees for shipping.

AFF = Above Finished Floor

All dimensions taken from the floor line may increase 3-1/4" with leg adjustment.

For convenience when cleaning, customer should install water tap near machine with 30 ft. of heavy duty hose with squeeze valve.

This drawing is supplied as a reference for connection information only. It will not be utilized for manufacturing of unit.

### Electrical Warning:

Service wire temperature rating: 90°C minimum.

### Plumbing Notes:

Required water hardness to be 3 grains or less per gallon for best results.

Recommended building flowing hot water pressure to the dishwasher is 40-45 PSI.

Recommended building flowing cold water to the dishwasher is 30-35 PSI. If cold water is less than 55°F, contact sales engineering.

Water hammer arrestor (meeting ASSE-1010 standard or equivalent) to be supplied (by others) in hot and cold supply lines at service connection.

### Ventilation Notes:

Heat pump and enclosure ships on separate skid to yield 81-7/8" door clearance.

Room ventilation is required to handle machine's latent & sensible heat.

(b) No facility ventilation within 24" of heat pump enclosure.

### Advansys Notes:

Refer to Advansys technical report at [www.hobartcorp.com](http://www.hobartcorp.com) for guidance with local regulatory compliance.

### Water Quality Required:

Total water hardness < 3 grains per gallon.

Total suspended solids (TSS) < 10 microns.

Heat Gain to Space (BTU/Hr.)	
Latent	Sensible
92,181	39,506



# FT1000 advansys ELECTRIC

## Flight-Type Dishwashing Machine

### SERVICE CONNECTIONS WITH CIRCUIT BREAKERS (1) SINGLE POINT CONNECTION AS SHOWN BELOW

E1 Motors, Controls, B/D Blowers, Wash Tank Auxiliary Heat, Dual Rinse Heat, Heat Pump Compressor, Power Rinse & Booster Heat (TB1) (1) Single Point Connection as Shown Below			
Voltage	Rated Amps	Minimum Supply Circuit Ampacity	Maximum Protective Device
480/60/3	127	175	175

### SERVICE CONNECTIONS W/O CIRCUIT BREAKERS (5) SERVICE CONNECTIONS AS SHOWN BELOW

E1 Motors & Controls (1TB) (1) Service Connection as Shown Below			
Voltage	Rated Amps	Minimum Supply Circuit Ampacity	Maximum Protective Device
208/60/3	41.4	60	60
480/60/3	25.4	35	35
E2 Electric Tank Heat, Power Rinse (2TB) (1) 26 kW Connection as Shown Below			
Voltage	Rated Amps	Minimum Supply Circuit Ampacity	Maximum Protective Device
208/60/3	77.8	100	100
240/60/3	74.2	100	100
480/60/3	37.0	50	50
E3 Heat Pump Compressor & Wash Tank Auxiliary Heat (3TB) (1) 13 kW Connection as Shown Below			
Voltage	Rated Amps	Minimum Supply Circuit Ampacity	Maximum Protective Device
208/60/3	64.2	80	80
240/60/3	62.4	80	80
480/60/3	30.0	40	40
E4 Electric Tank Heat, Dual Rinse (4TB) (1) 13 kW Connection as Shown Below			
Voltage	Rated Amps	Minimum Supply Circuit Ampacity	Maximum Protective Device
208/60/3	45.7	60	60
240/60/3	43.9	60	60
480/60/3	22.6	30	30
E5 Electric Booster (5TB) (1) 9 kW Connection as Shown Below			
Voltage	Rated Amps	Minimum Supply Circuit Ampacity	Maximum Protective Device
208/60/3	27.0	35	35
240/60/3	25.8	35	35
480/60/3	12.9	20	20

### SPECIFICATIONS

#### Capacities

Conveyor Speed (feet per minute)	4.0 - 8.5
Dishes per Hour	14,316
ASR Tank (U.S. gallons)	7.2
Pre-Wash Tank (U.S. gallons)	40
Wash Tank (U.S. gallons)	40
Rinse Tank (U.S. gallons)	40
Dual Rinse Tank (U.S. gallons)	7.2

#### Motor Horsepower

Auto Soil Removal	¾
ASR Wash	¾
Pre-Wash Tank	3½
Wash Tank	5
Rinse Tank	5
Dual Rinse Tank	¾
Final Rinse	½
Conveyor	¾
Blower Dryer	2
Heat Pump Compressor	8

#### Water Consumption

U.S. Gallons per Hour (maximum use)	58
U.S. Gallons per Minute	0.97

#### Heating

Tank Heat, Electric (kW regulated) . . Total tank heat - 52 kW (Wash, Rinse, Dual Rinse)	
Electric Booster (kW)	9

**Shipping Weight (approximate)** . . .Varies by individual model  
(Consult your Hobart representative)

**Crated Dimensions** . . . . .Varies by individual model  
(Consult your Hobart representative)

FT1000 Advansys Water Treatment System	
Model	Description
WS-80	Water Softener
PF-10-EHT	Hi-Temp Filter Housing
SD-510HT	Sediment Filter Cartridge

#### CONTROL BOX ELECTRICAL CONNECTIONS



\*Note for installing electrician: Repunch holes E1 and E6 as required to coincide with conduit requirements for machines with circuit breakers.

**Detail "A-A"**  
(not to scale)

As continued product improvement is a policy of Hobart, specifications are subject to change without notice.