



PARALANE

PARALANE²

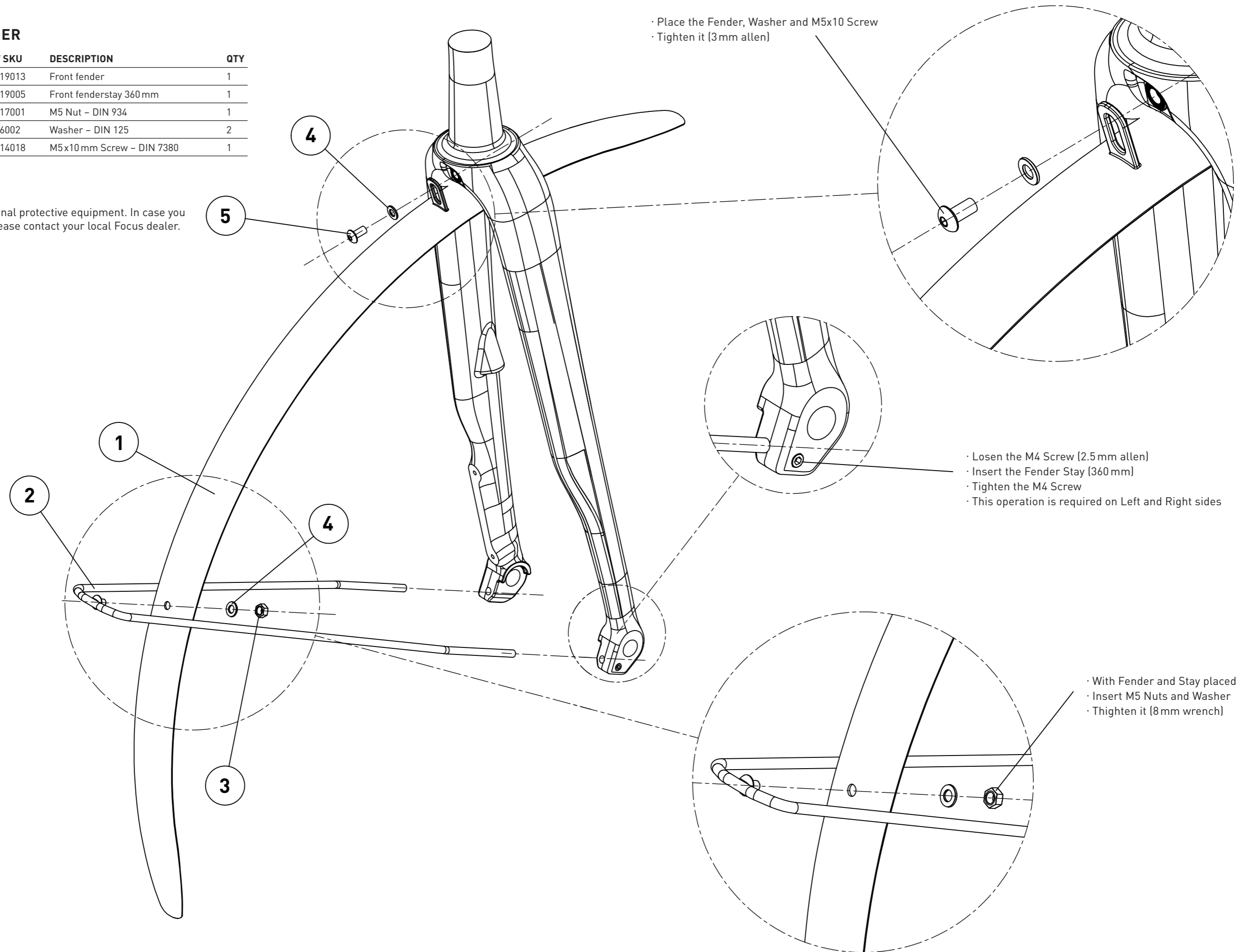
ENGLISH

FRONT FENDER

POSITION	DCW SKU	DESCRIPTION	QTY
01	140119013	Front fender	1
02	140219005	Front fenderstay 360 mm	1
03	199217001	M5 Nut – DIN 934	1
04	19936002	Washer – DIN 125	2
05	199114018	M5x10 mm Screw – DIN 7380	1

IMPORTANT

Always wear personal protective equipment. In case you have any doubt, please contact your local Focus dealer.

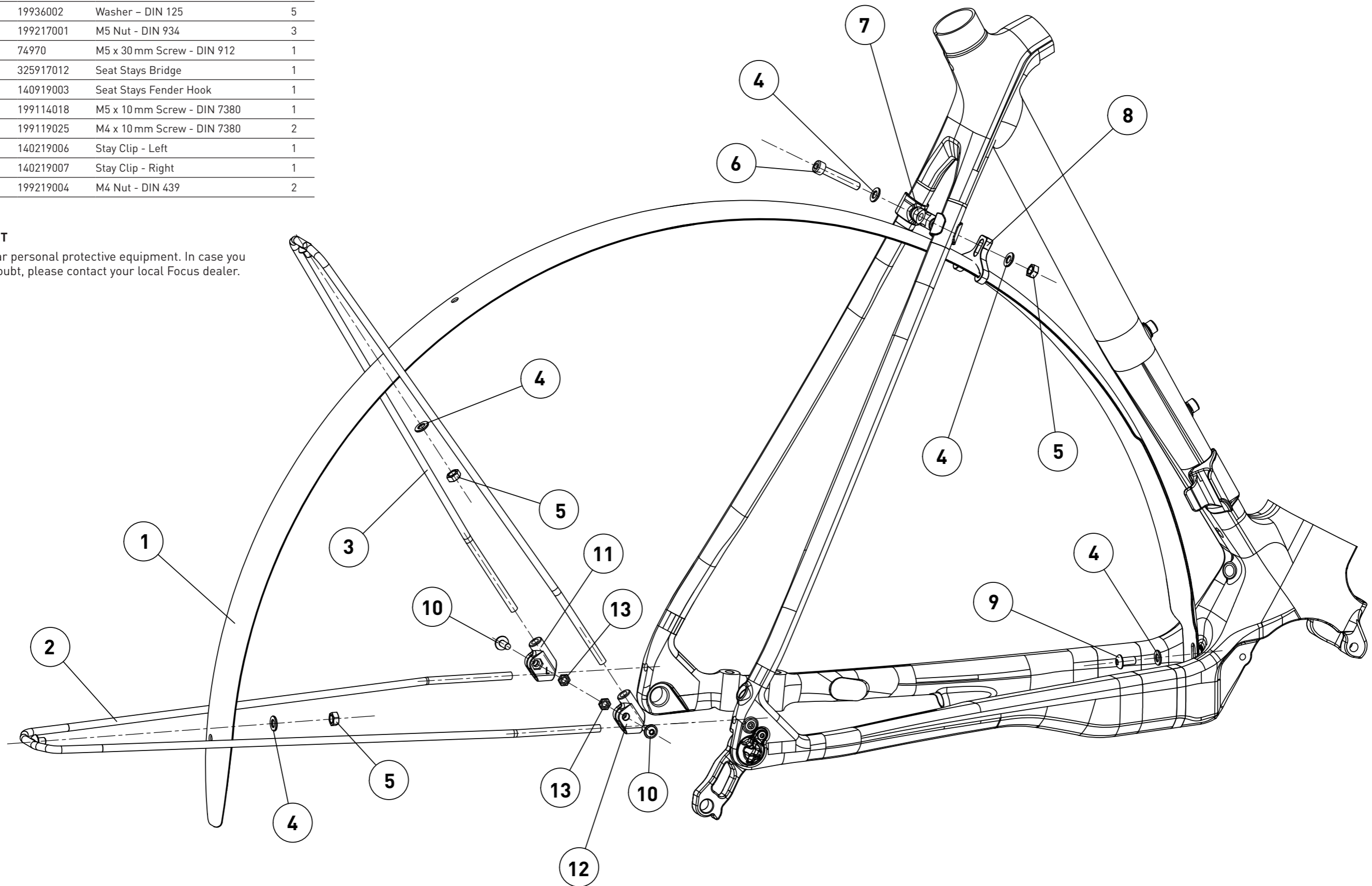


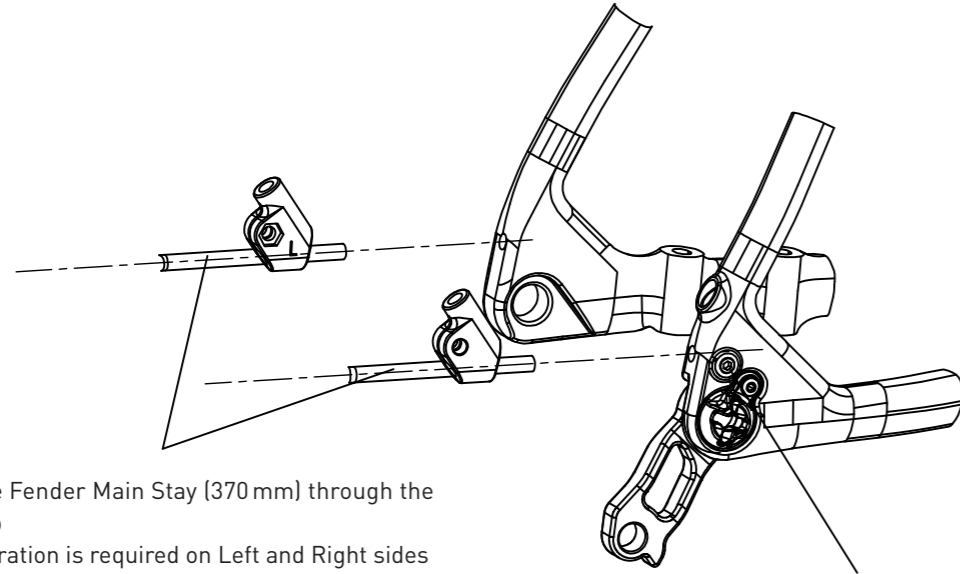
REAR FENDER

POSITION	DCW SKU	DESCRIPTION	QTY
01	140119014	Rear fender	1
02	140219003	Rear Fender Main Stay 370 mm	1
03	140219004	Rear Fender Auxiliary Stay 340 mm	1
04	19936002	Washer – DIN 125	5
05	199217001	M5 Nut - DIN 934	3
06	74970	M5 x 30 mm Screw - DIN 912	1
07	325917012	Seat Stays Bridge	1
08	140919003	Seat Stays Fender Hook	1
09	199114018	M5 x 10 mm Screw - DIN 7380	1
10	199119025	M4 x 10 mm Screw - DIN 7380	2
11	140219006	Stay Clip - Left	1
12	140219007	Stay Clip - Right	1
13	199219004	M4 Nut - DIN 439	2

IMPORTANT

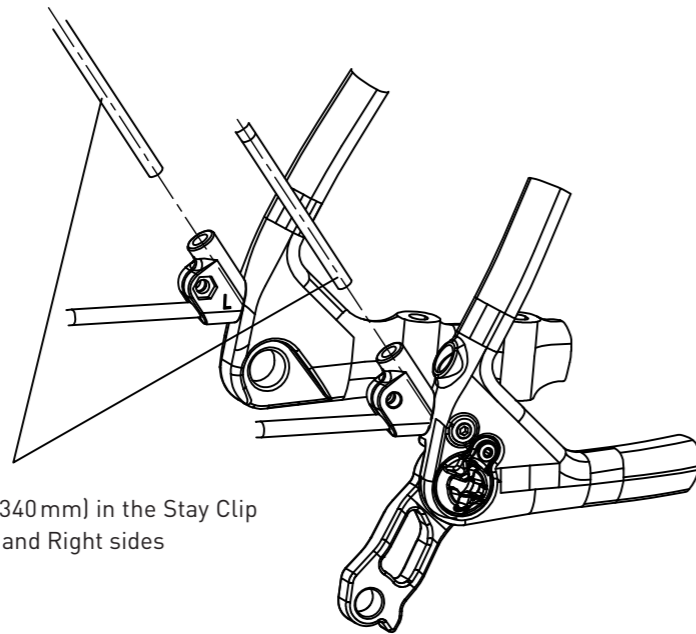
Always wear personal protective equipment. In case you have any doubt, please contact your local Focus dealer.



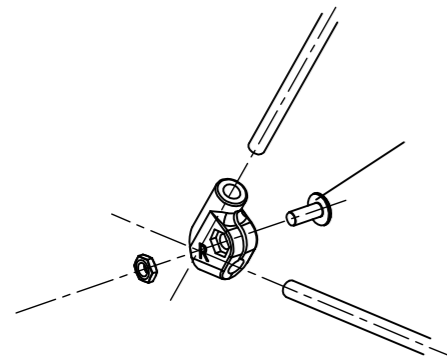


- Inset the Fender Main Stay (370 mm) through the Stay Clip
- This operation is required on Left and Right sides

- Losen the M4 Screw (2.5 mm allen)
- Insert the Fender Main Stay
- Tighten the M4 Screw
- This operation is required on Left and Right sides



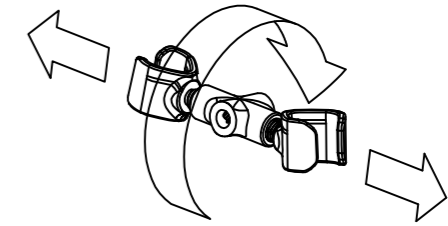
- Insert the Fender Auxiliary Stay (340 mm) in the Stay Clip
- This operation is required on Left and Right sides



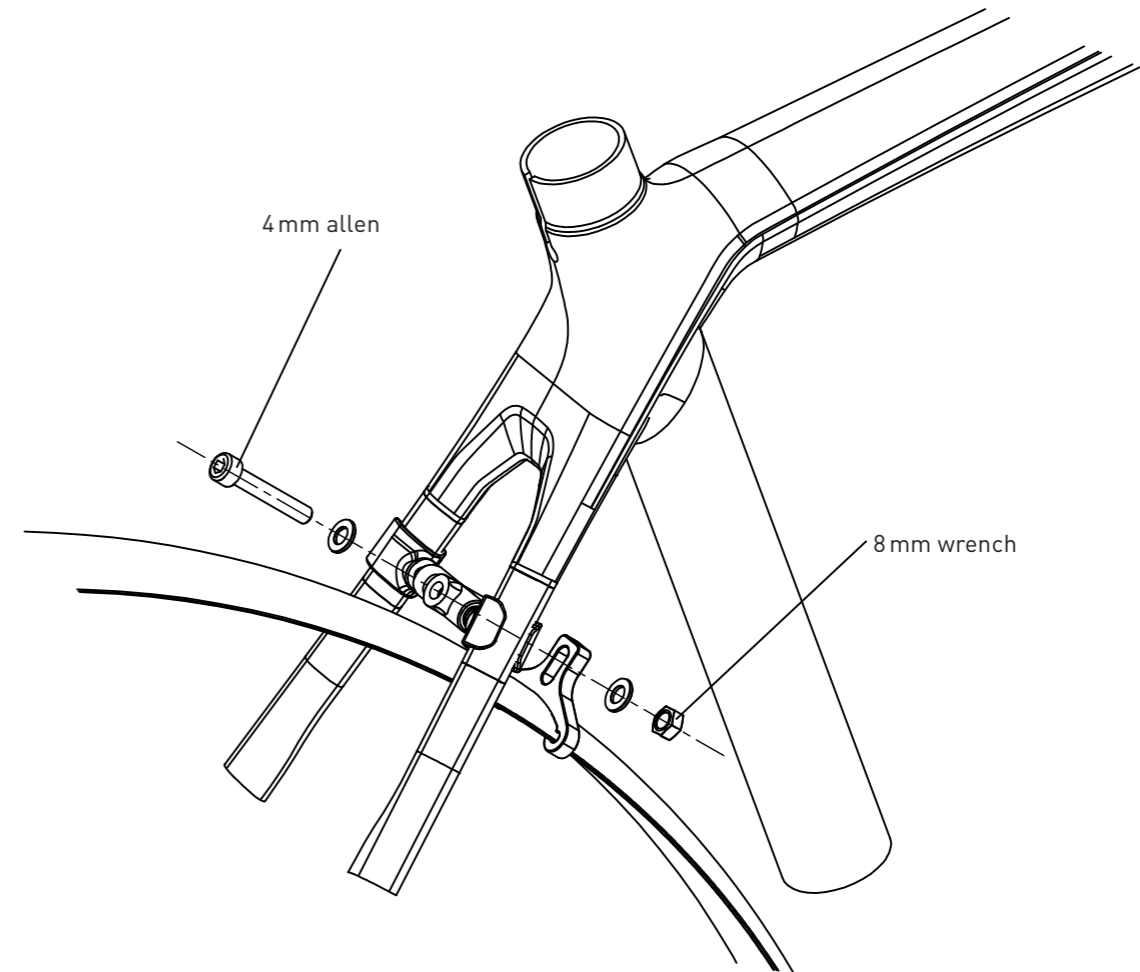
- With both Stays in place
- Insert the M4x10 Screw and M4 Nut in the Stay Clip
- Tighten it (4 mm allen)
- This operation is required on Left and Right sides



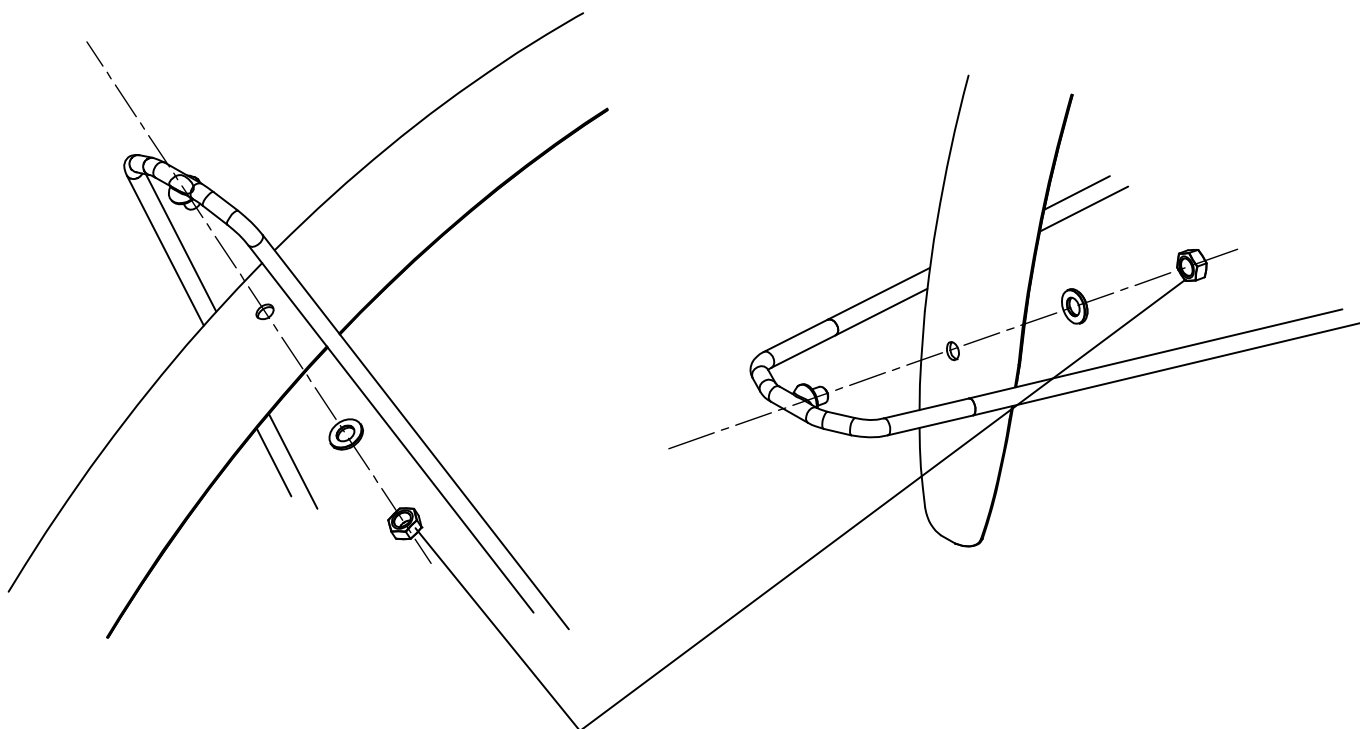
- Insert Bridge Hook on the Fender
- Slide it into the correct position



- Adjust Bridge width
- Place it on the Frame

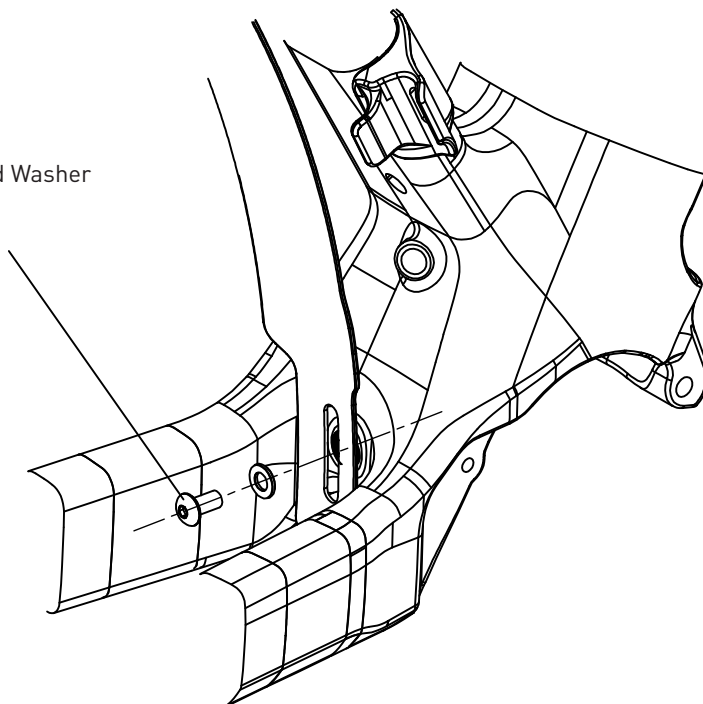


- With Bridge and Hook placed
- Insert M5x30 Screw, Washers and M5 Nut
- Tighten it (4 mm allen + 7 mm wrench)



- With Fender and Stays placed
- Insert M5 Nuts and Washers
- Tighten it (8mm wrench)
- This operation is required on Main and Auxiliary Stays

- With Fender placed
- Insert M5x10 Screw and Washer
- Tighten it (3mm allen)


DERBY CYCLE WERKE GMBH

Siemensstraße 1-3
49661 Cloppenburg, Germany
+49 (4471)966-0

www.focus-bikes.com
info@derby-cycle.com
www.derby-cycle.com

1973K0019028
KD1973K0019028