

INSTALLATION INSTRUCTIONS

Centerline or Ecoline Undercounter Drain Water Tempering Kit - PN 00-562216

NOTICE

These instructions are only intended for use by properly trained and qualified service technicians.

If you do not have technical training for this product, you should read the following procedure, in its entirety, to determine if you have the necessary tools, instruments and skills required to perform the procedure. Procedures for which you do not have the necessary tools, instruments and skills should be performed by a trained Hobart Service technician.

The reproduction, transfer, sale or other use of this manual, without the express written consent of Hobart Service, is prohibited.

These instructions provide information for installing Drain Water Tempering (DWT) kit PN 00-562216 on a Centerline or Ecoline Undercounter dishwasher.

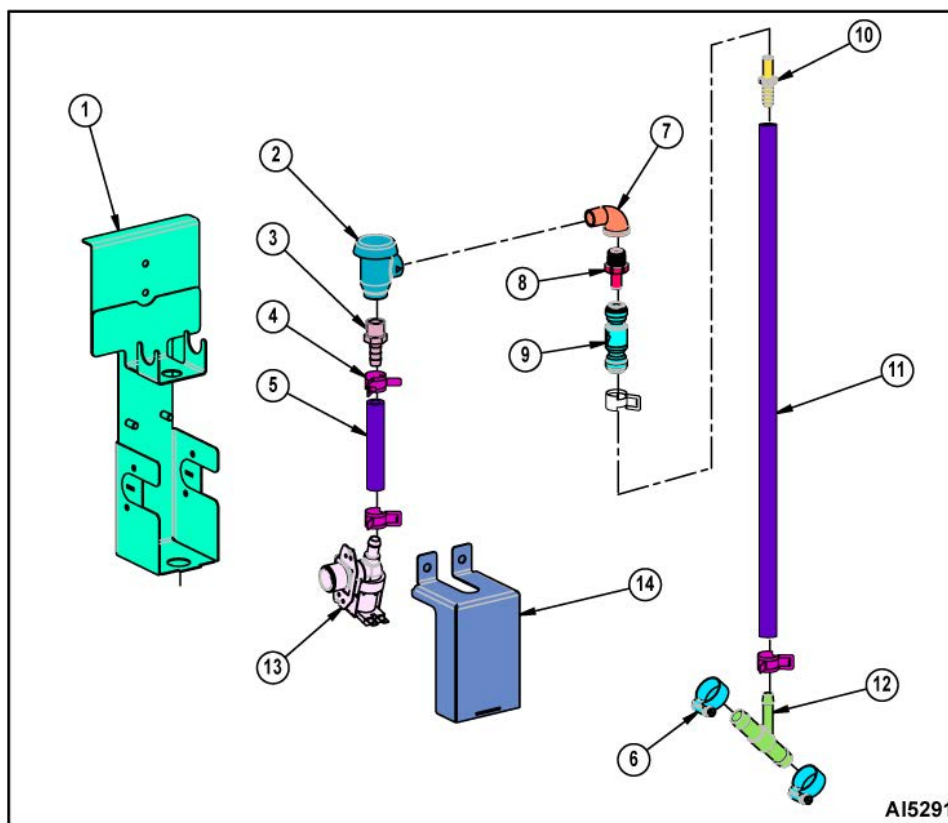


Fig. 1

Undercounter Drain Water Tempering Kit - 00-562216			
ITEM	PART NUMBER	DESCRIPTION	QTY.
1	00-562281	DWT Bracket Assembly	1
2	00-271008	Breaker, Vacuum 3/8"	1
3	FP-090-30	Fitting, Hose 3/8" ID Hose to 3/8" NPT	1
4	00-558090	Clamp, Hose 17 mm - Spring Band	4
5	00-941726-00004	Hose, 3/8" x 3.5"	1
6	00-558230	Clamp, Hose, #10 .562 Wide Band, 300SST 1/2-1-1/16	2

Undercounter Drain Water Tempering Kit - 00-562216			
ITEM	PART NUMBER	DESCRIPTION	QTY.
7	FP-015-10	Elbow, Street 90° x 3/8"	1
8	FP-091-33	Adapter, Pipe 3/8" NPT to 3/8" Stem	1
9	FP-091-35	Valve, Check 3/8" - Quick Connect	1
10	FP-091-34	Adapter, Pipe 3/8" Barb to 3/8" Stem	1
11	00-941726-00006	Hose, 3/8" x 48"	1
12	00-942160	Adapter, Tee (DWT)	1
13	00-941798	Valve, Detrol	1
14	00-975134	Cover, DWT Assembly	1
Not Shown			
15	00-562291	DWT Power Cable (Includes Strain Reliefs)	1
16	SC-122-37	Screw - used to secure valve in bracket	2
17	00-526373	Pipe, Tape	1
18	00-293625	Hose, Fill	1
19	WS-017-06	Washer, Flat - used to secure cover to bracket	2
20	NS-015-01	Nut, 1/4-20 - used to secure cover to bracket	2
21	F45719	Centerline or Ecoline Undercounter Drain Water Tempering Kit - PN 00-562216	1

TOOLS

- Standard set of hand tools.
- Temperature tester (thermocouple type).

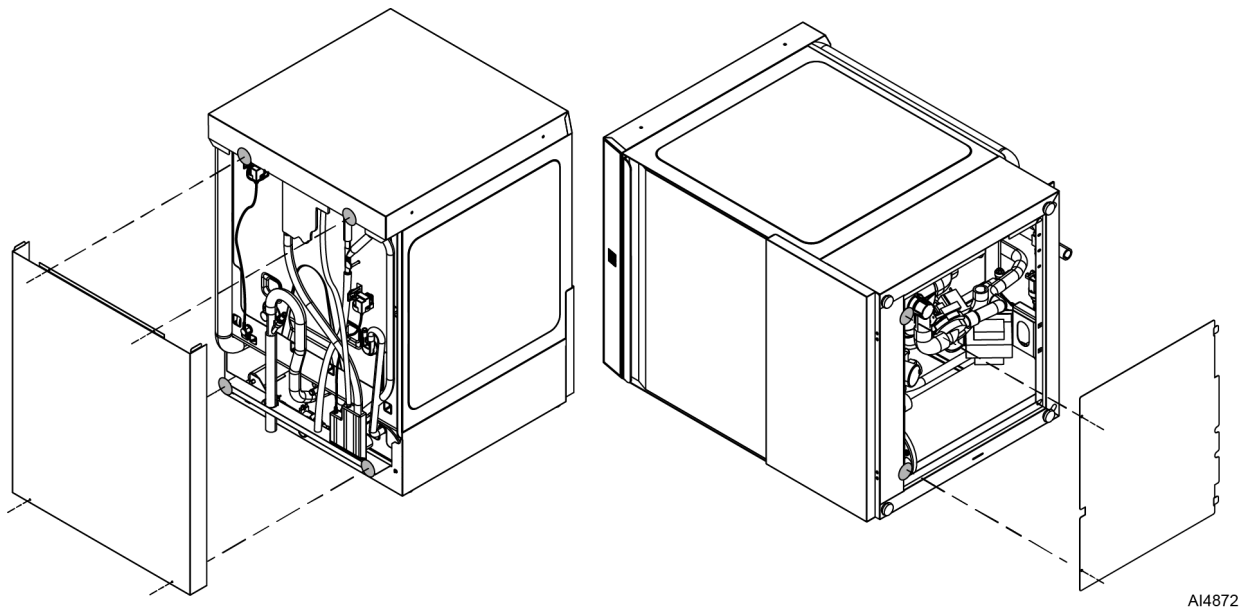
INSTRUCTIONS



WARNING

Disconnect the electrical power to the machine and follow lockout / tagout procedures.

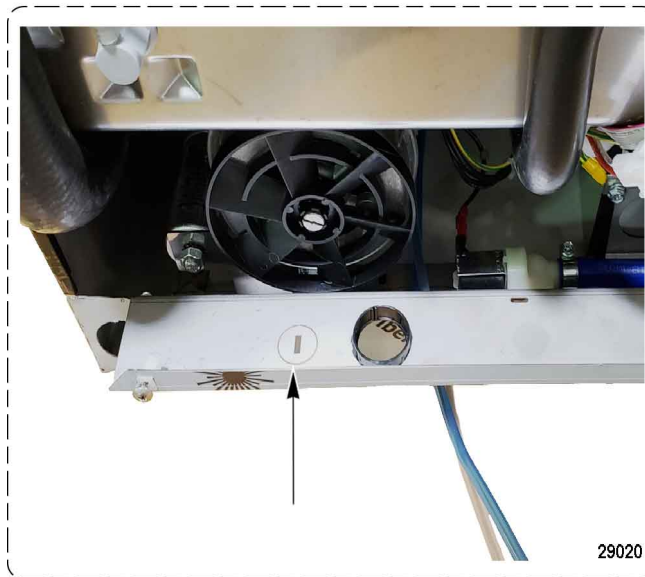
1. Install DWT power cable as follows:
 - A. If required, drain dishwasher to remove any residual water.
 - B. Move dishwasher to a location where the rear and sides can be accessed.
 - C. Remove four screws and rear panel (Fig. 2).



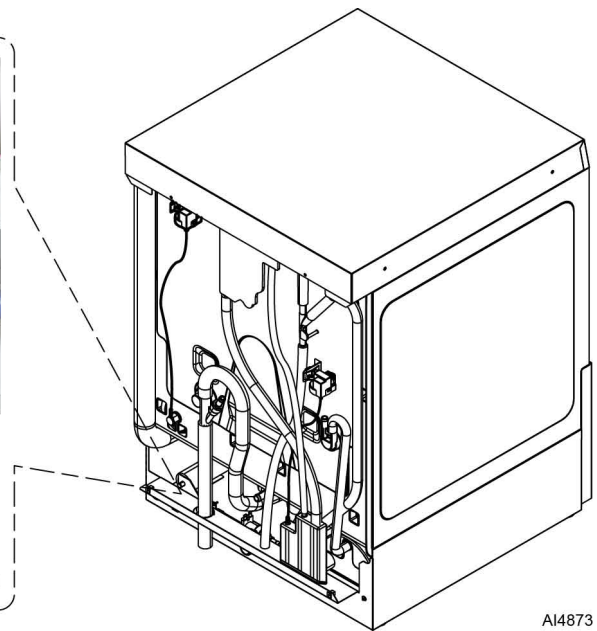
AI4872

Fig. 2

- D. Lay dishwasher on side.
- E. Remove two screws and bottom panel.
- F. Remove rear panel knockout (Fig. 3).



29020



AI4873

Fig. 3

- G. Install strain relief in knockout hole.
- H. Feed DWT power cable through strain relief. Make sure piggy-back portion comes out the top of strain relief.
- I. Route DWT power cable through machine to drain pump.
- J. Disconnect harness from drain pump.
- K. Connect DWT power cable to drain pump.
- L. Connect drain pump harness to DWT power cable (Fig. 4).

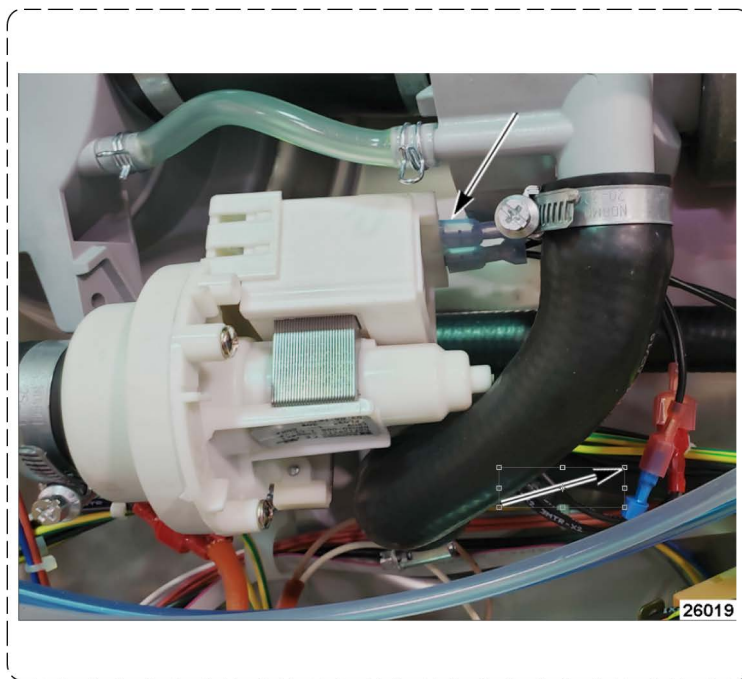
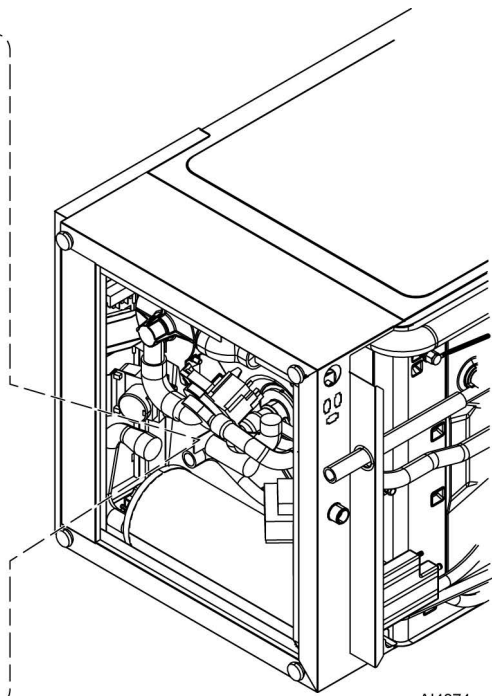


Fig. 4



AI4874

- M. Install cable ties to secure the DWT power cable in place.
- N. Install bottom panel.
- O. Rotate dishwasher so it is sitting on its base.
- P. Install rear panel.

NOTE: DWT assembly will be installed on outside of dishwasher.

2. Look at customer facility and determine best location for DWT assembly to be placed on the dishwasher.

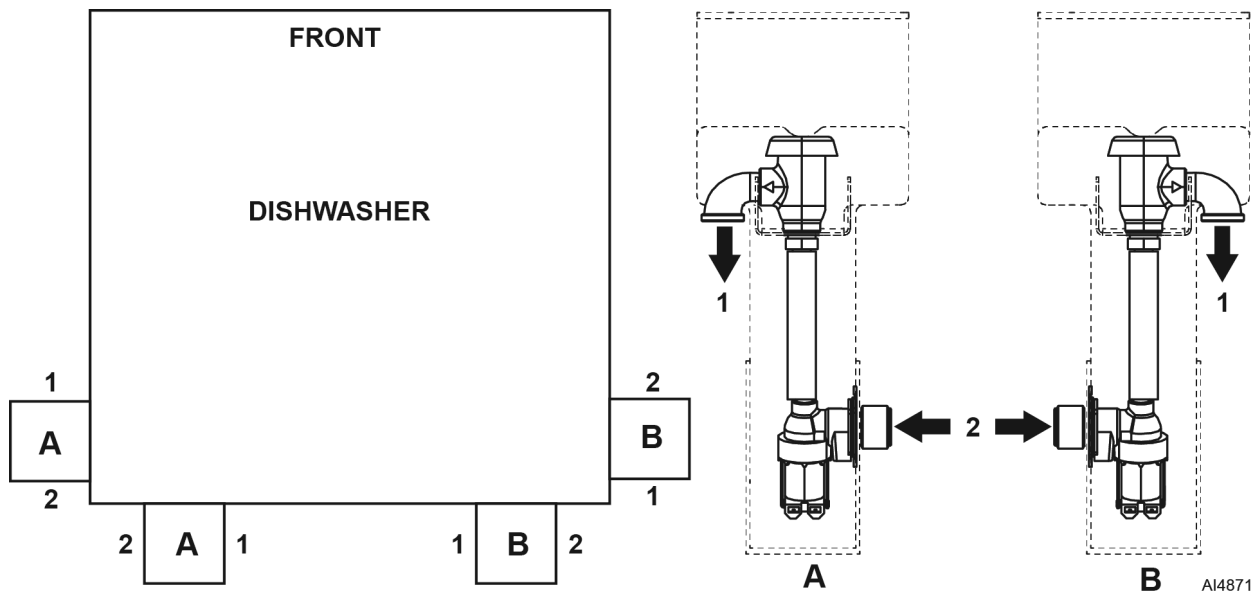


Fig. 5

3. Install vacuum breaker in DWT bracket assembly as follows:
 - A. Wrap all fitting threads with Teflo™ tape.
 - B. Thread street elbow (4, [Fig. 6](#)) into vacuum breaker (1) until tight. Make sure elbow opening points straight down.

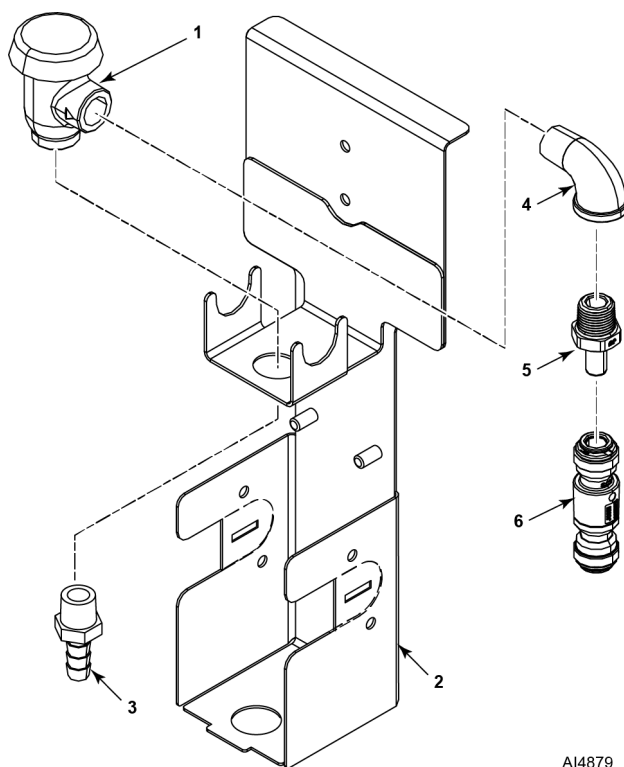


Fig. 6

- C. Place vacuum breaker (1, [Fig. 6](#)) in DWT bracket assembly (2). Make sure elbow is in correct position for install location.
 - D. Thread hose fitting (3, [Fig. 6](#)) into vacuum breaker (1) until tight.
 - E. Thread pipe adapter (5, [Fig. 6](#)) into street elbow (4) until tight.
 - F. Install quick-connect check valve (6, [Fig. 6](#)) on pipe adapter (5).
4. Install strain relief included with DWT Power Cable (1, [Fig. 7](#)) in DWT bracket assembly (2) and secure in place with jam nut (3).

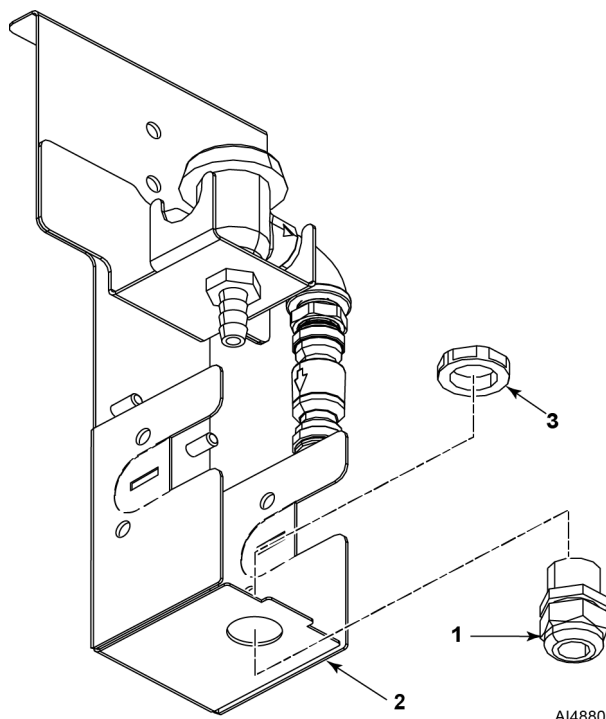


Fig. 7

5. Look at valve assembly to determine if it needs to be reconfigured to properly fit in DWT mounting bracket. Refer to [Fig. 8](#) and [Fig. 9](#) for additional information.

LOCATION A VALVE CONFIGURATION

**NOTE BRACKET AND CONNECTOR ORIENTATION
(BOTH ON LEFT SIDE OF VALVE LOOKING AT INLET PORT)**

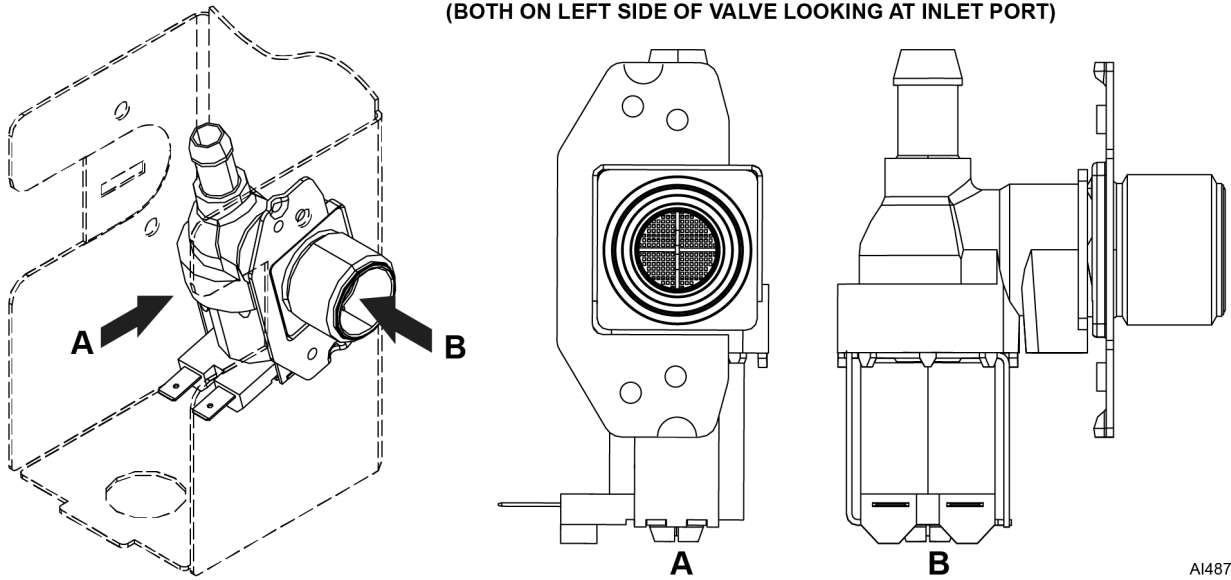


Fig. 8

LOCATION B VALVE CONFIGURATION

**NOTE BRACKET AND CONNECTOR ORIENTATION
(BOTH ON RIGHT SIDE OF VALVE LOOKING AT INLET PORT)**

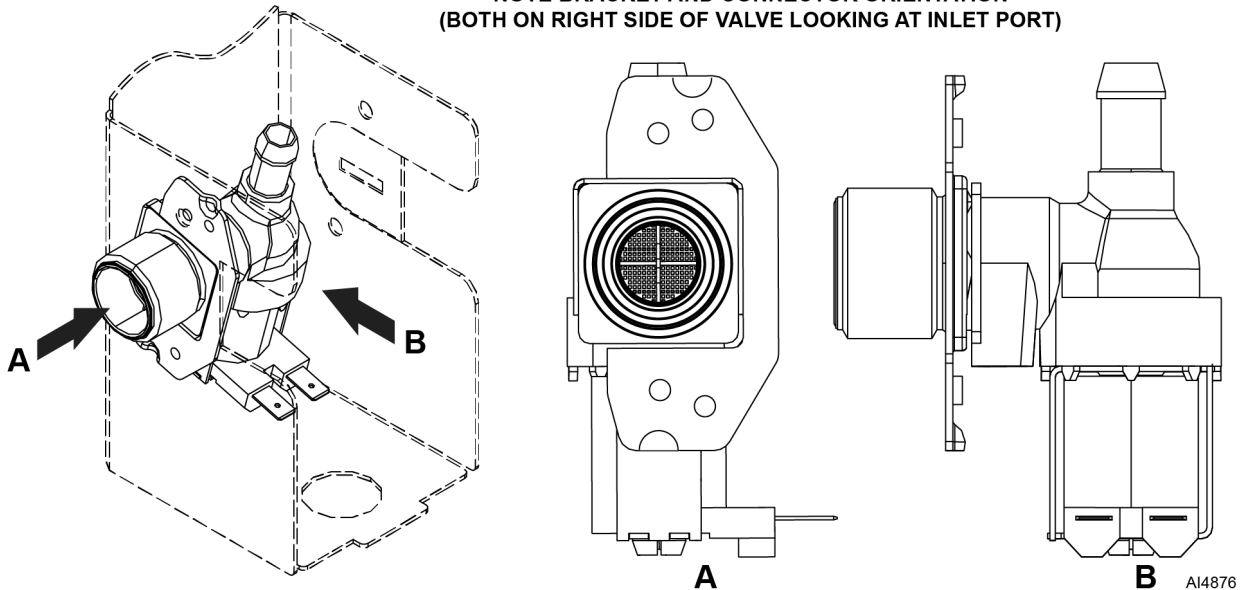


Fig. 9

6. If required, configure valve assembly as follows:
- A. Pull mounting bracket (1, [Fig. 10](#)) off valve body.
 - B. Pull solenoid (2, [Fig. 10](#)) down.
 - C. Rotate solenoid 180° (3, [Fig. 10](#)).
 - D. Push solenoid (4, [Fig. 10](#)) up. Make sure tab (A) fits between dimples (B).
 - E. Install mounting bracket (5, [Fig. 10](#)) on valve body.

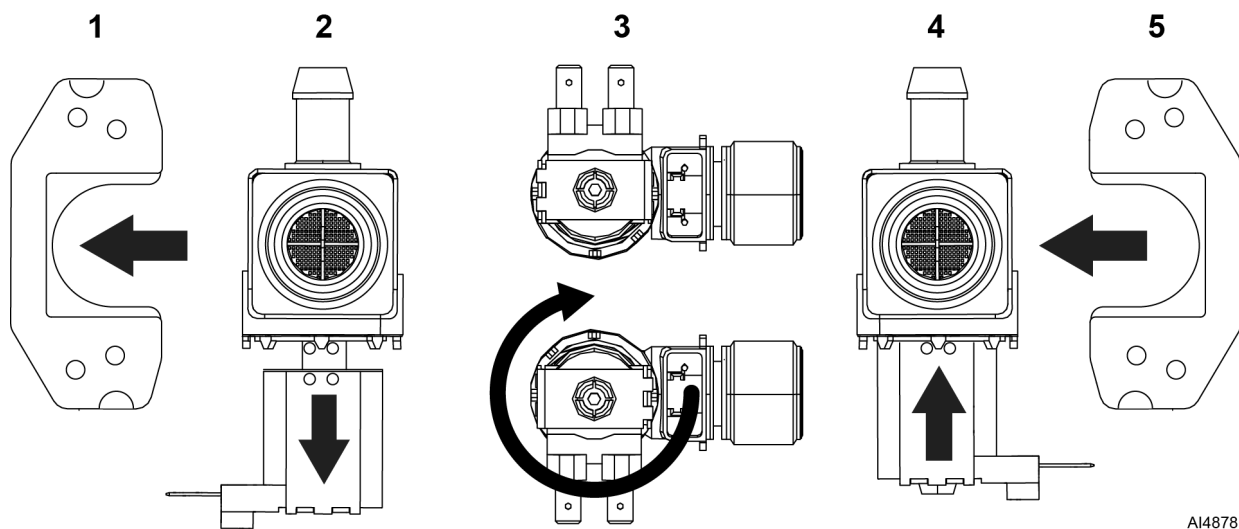
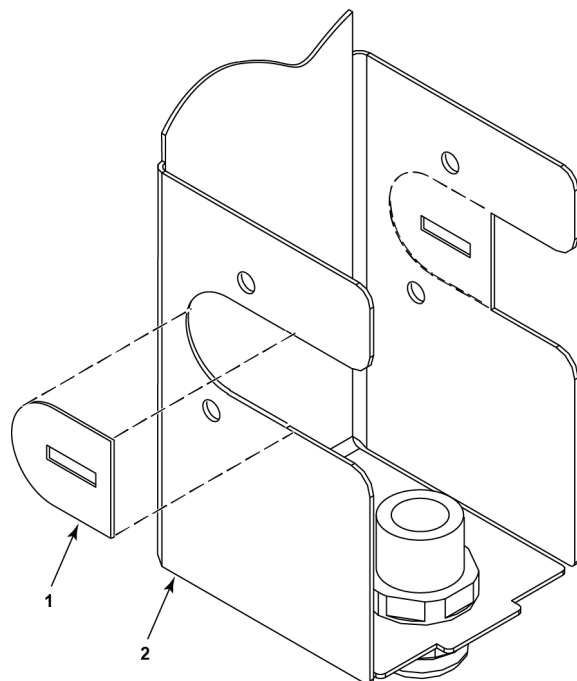


Fig. 10

AI4878

7. Install valve in DWT bracket assembly as follows:

A. Remove cut-out (1, [Fig. 11](#)) from DWT bracket assembly (2).



AI4881

Fig. 11

B. Install hose (2, [Fig. 12](#)) on hose fitting (1).

C. Slide a hose clamp (3, [Fig. 12](#)) on hose (2) to secure on hose fitting (1).

D. Slide another hose clamp (3, [Fig. 12](#)) on to hose (2)

E. Place valve (4, [Fig. 12](#)) outlet port in hose (2).

F. Use hose clamp (3, [Fig. 12](#)) to secure valve (4) in hose (2)

G. Place valve (4, [Fig. 12](#)) in DWT bracket assembly (5) and secure in place with screws (6).

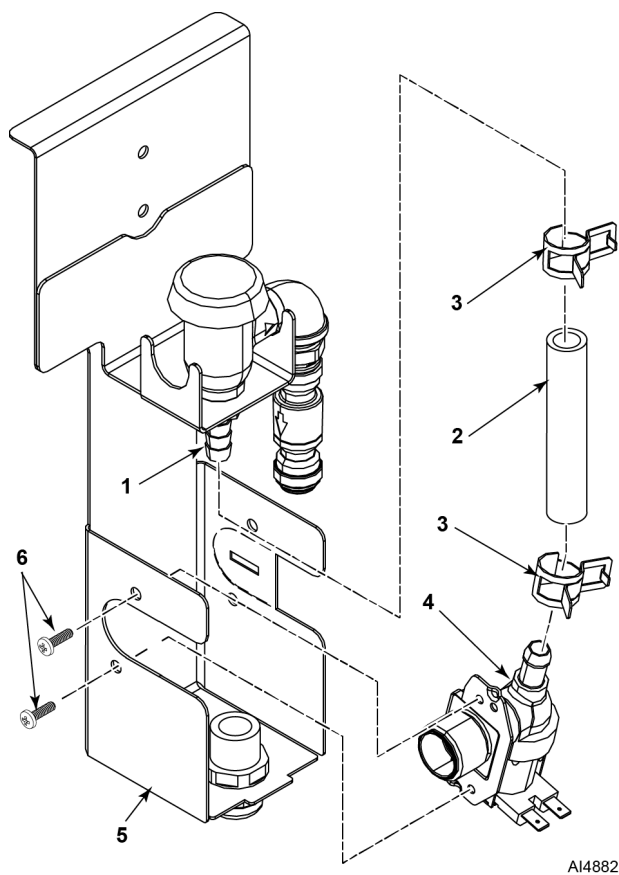


Fig. 12

8. Install Tee-adapter fitting in drain hose as follows:

A. Cut drain hose (1, Fig. 13).

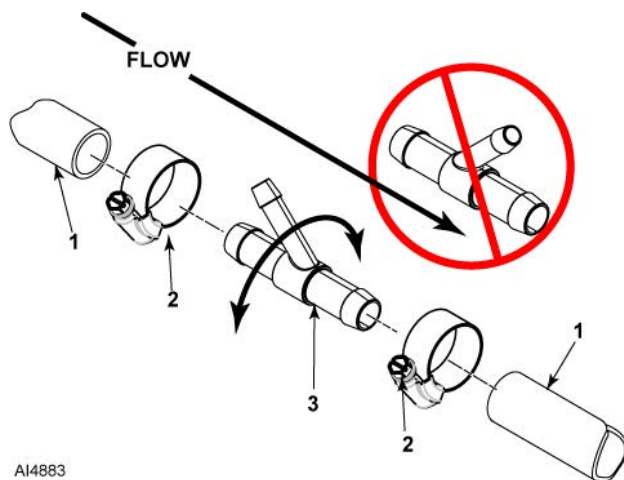


Fig. 13

B. Slide a worm-drive hose clamp (2, Fig. 13) onto each drain hose (1) section.

C. Install Tee-adapter fitting (3, Fig. 13) in drain hose (1) and secure with hose clamps (2). Make sure:

- Fitting is installed so DWT discharge flows towards drain.
- Fitting is positioned to aid in hose connection. The T-portion can be installed so it rests on the floor or sticking up.

9. Install DWT assembly on dishwasher as follows:

A. Remove top cover screw (1, Fig. 14) from dishwasher at desired install location.

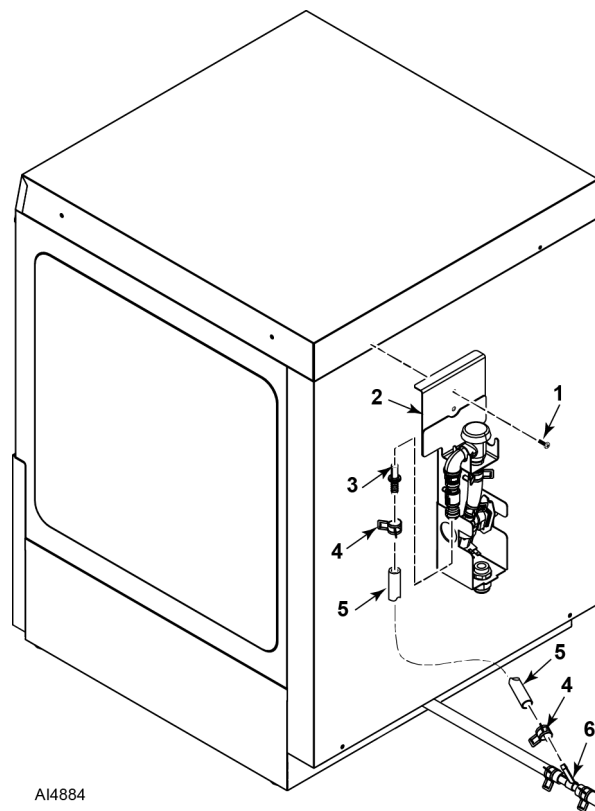


Fig. 14

- B. Place DWT assembly (2, [Fig. 14](#)) on dishwasher and secure in place with top cover screw (1).
 - C. Slide a hose clamp (4, [Fig. 14](#)) onto DWT discharge hose (5).
 - D. Insert barbed pipe adapter (3, [Fig. 14](#)) into DWT discharge hose (5) and secure with hose clamp (4).
 - E. Connect barbed pipe adapter (3, [Fig. 14](#)) to DWT assembly (2). Check valve quick connect fitting.
 - F. Slide a hose clamp (4, [Fig. 14](#)) onto DWT discharge hose (5).
 - G. Slide DWT discharge hose (5, [Fig. 14](#)) onto Tee-adaptor fitting (6) and secure with hose clamp (4).
10. Connect DWT power cable to valve.
 11. Connect facility cold water supply to DWT assembly valve.
 12. Reconnect power to the dishwasher.
 13. Operate the dishwasher through several cycles.
 - Look at all hose connection to make sure there are no leaks.
 - Check drain water temperature. It must be below 140°.
 14. Place cover on DWT assembly and secure in place with screws.
 15. Move dishwasher to permanent location.