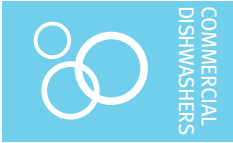




Project _____
 AIA # _____ SIS # _____
 Item # _____ Quantity _____ C.S.I. Section 114000



DDU38CL-RL, DDU38CL-LR DIRECT DRIVE UNLOADER For CL Series



DDU38CL-RL picture shown



STANDARD FEATURES

- + Back, bottom and end shields of formed 14 gauge stainless steel with coved corners
- + Attached to the clean side of the dishwasher by stainless steel bolts
- + Unit has a 1 1/2" drain connection and perforated stainless steel drain cover
- + Center pawl to be connected to dishwasher conveyor by means of a stainless steel adjustable rod.
- + As conveyor drives, center pawl drives racks around 90 degree corner.
- + Designed to move the racks at the same speed as the conveyor dishwasher speed.

OPTIONS & ACCESSORIES (Available at extra cost)

- DDU-BD-CL – required when design includes both Hobart DDU38CL Unloader & Hobart Blower Dryer; kit provides components necessary to join the conveyor between accessories
- SHTHD/E-ADJ is recommended for sheet pan clearance when vent canopy is not used
- Extended vent hood is not recommended
- DDU38CL cannot replace an existing DDU38E

SPECIFIER STATEMENT

The mechanical DDU38CL Direct Drive Unloader accessory is designed to provide automatic 90° indexing for corner unloading. The DDU38CL is direction specific, adds 38" in length to the clean side of the dishmachine and can accommodate all ware confined within a standard 20" x 20" foodservice rack, in addition to 6x sheet pans (when used with Hobart SHTPAN-RACK). The DDU38CL is not compatible with Hobart CL44-VL and CL66-VL Ventless units.

CL SERIES – DDU38CL-RL, DDU38CL-LR DIRECT DRIVE UNLOADER

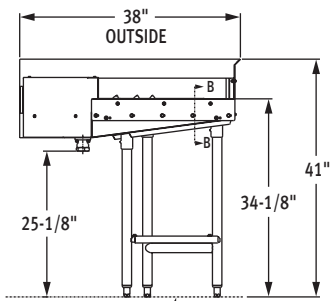
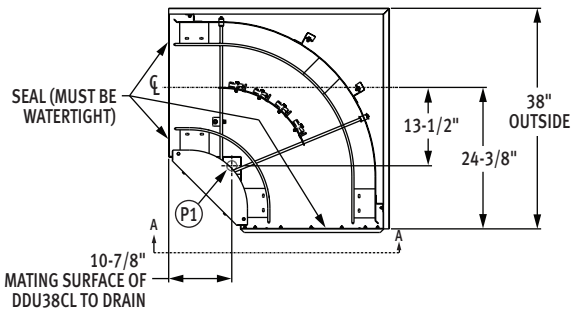
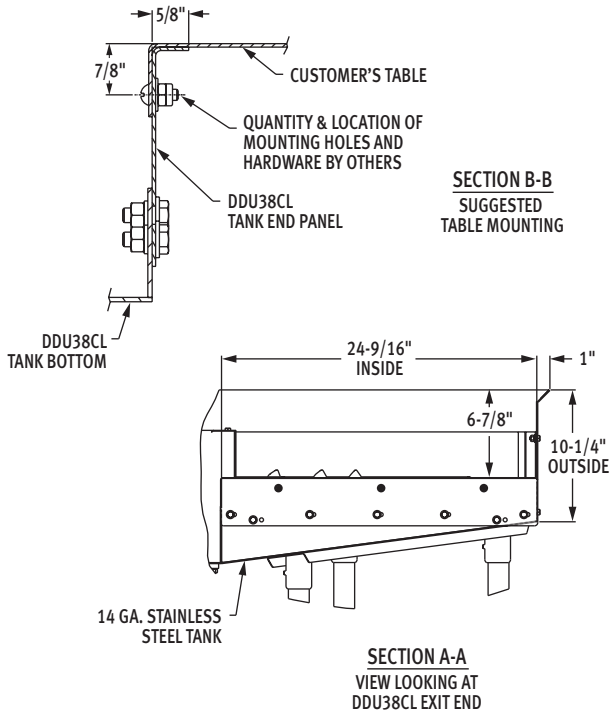
Approved by _____ Date _____ Approved by _____ Date _____



DDU38CL-RL, DDU38CL-LR DIRECT DRIVE UNLOADER

For CL Series

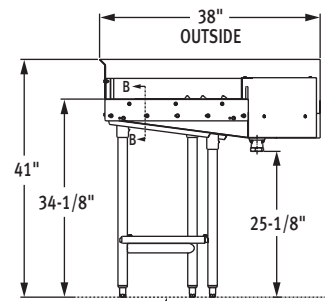
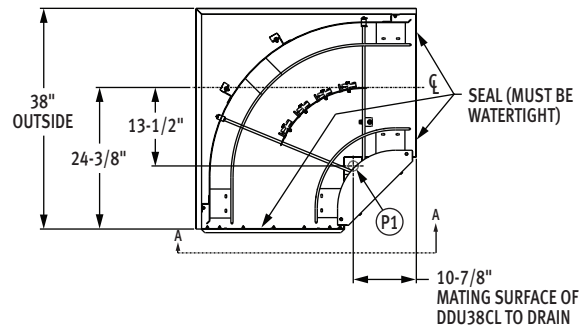
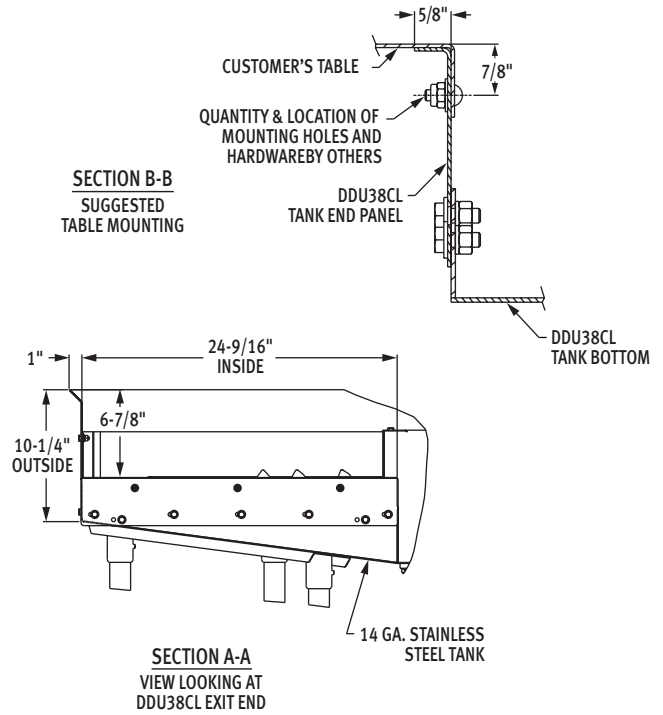
DDU38CL-LR



FLOOR LINE: ALL DIMENSIONS TAKEN FROM FLOOR LINE MAY BE INCREASED APPROX. 3/4" OR DECREASED 1/2".

CL MODELS
DIRECT DRIVE UNLOADER
L-R OPERATION
01-605357
REV B

DDU38CL-RL



FLOOR LINE: ALL DIMENSIONS TAKEN FROM FLOOR LINE MAY BE INCREASED APPROX. 3/4" OR DECREASED 1/2".

CL MODELS
DIRECT DRIVE UNLOADER
R-L OPERATION
01-605356
REV B

WARNING: Plumbing connections must comply with applicable sanitary, safety and plumbing codes.

Note: For dimensions not shown, see specification sheet for model specified.

LEGEND

Plumbing Connections	
P1	Drain connection: 1-1/2" female pipe thread approximately 25-1/8" AFF.

Approximate shipping weight: 200 lbs.

As continued product improvement is a policy of Hobart, specifications are subject to change without notice.