

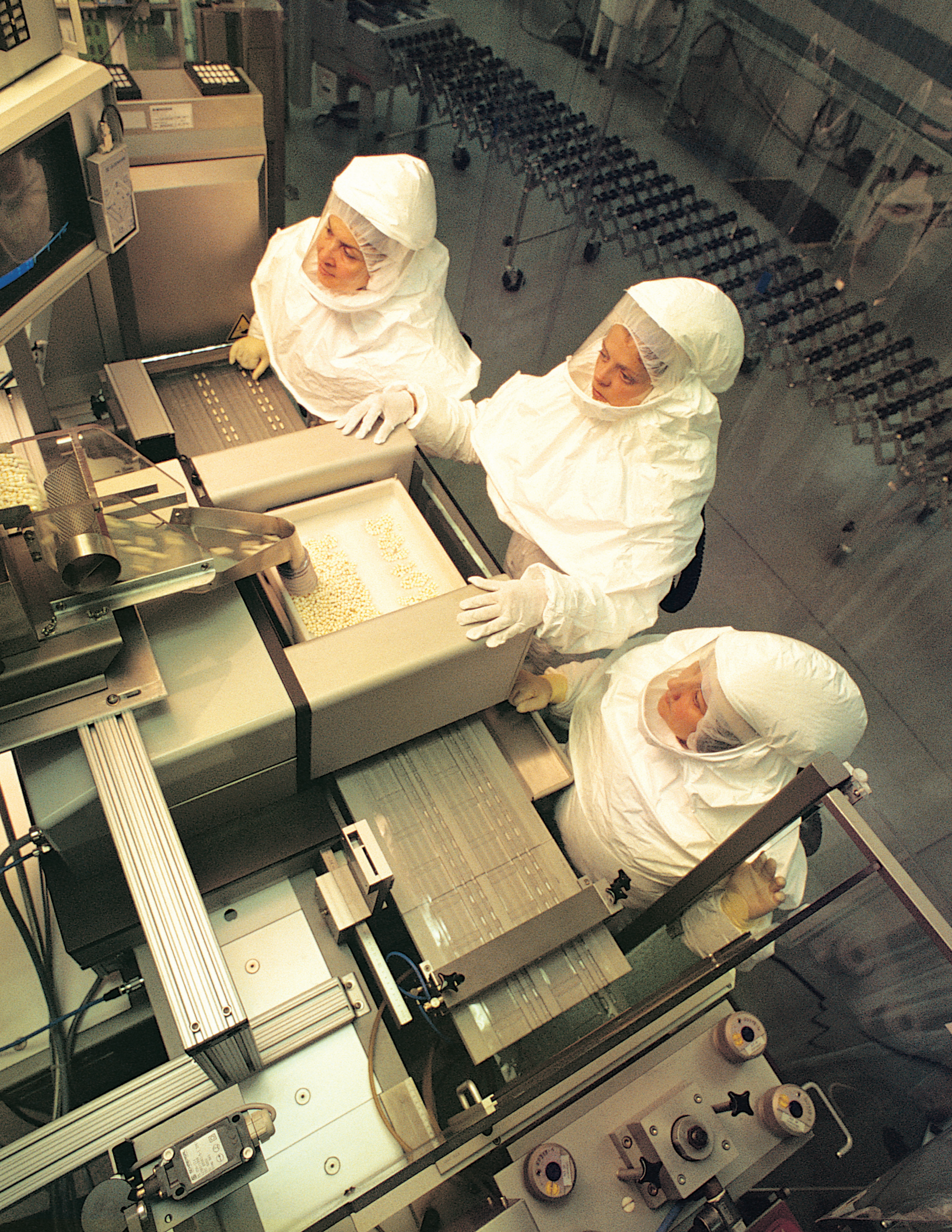


CONNECT AND PROTECT

Global Stainless Steel Enclosures


nvent

HOFFMAN



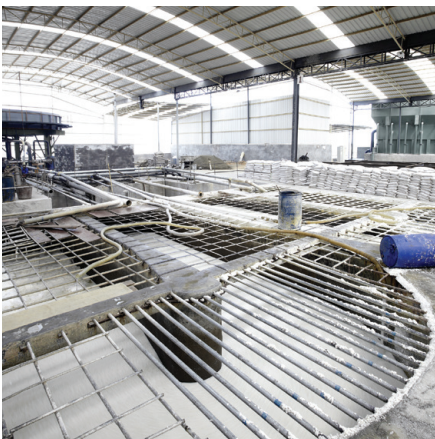
Protecting Vital Technologies in the World's Toughest Environments

THE #1 SPECIFIED STAINLESS STEEL ENCLOSURES IN THE WORLD

The reach and expansion of on-site control, communication and monitoring technology is driving innovation and productivity on a global scale. Today, the need to protect technology from increasingly harsh conditions in ever-closer proximity to production requires a new breed of highly engineered stainless steel unibody enclosure platforms. A full range of welded, unibody enclosures that offer superior strength and resistance to vibration compared to modular enclosure construction.

Only one enclosure brand is positioned and capable to meet your evolving equipment protection needs on a global scale. nVent HOFFMAN. The global leader in systems and solutions that protect vital electrical and electronic resources in the world's most demanding climates, conditions and production environments.

- Largest global supplier of freestanding unibody enclosures
- Broadest range of standard wall-mount and free-stand Type 304 and 316 stainless steel platform products, in metric and U.S. customary units
- Leading technologies and innovations for sealing and protecting electronics and electrical systems in highly corrosive environments
- Superior ATEX-certified enclosures and purging solutions for hazardous locations
- Innovators of the first NSF-certified hygienic enclosure line designed specifically for the food & beverage industry
- Localized manufacturing to Global ISO 9001:2008 standards, localized sales and support – deployable faster around the globe



THE ONLY PROVIDER WITH
STAINLESS STEEL ENCLOSURE
MANUFACTURING ON
EVERY MAJOR CONTINENT
AND WORLDWIDE AGENCY
CERTIFICATIONS



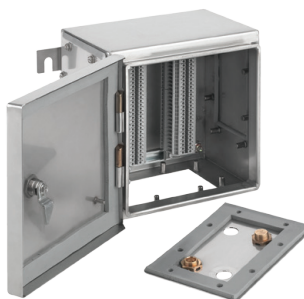
For more information: nVent.com/HOFFMAN



HOFFMAN BRAND GLOBAL SELECT STAINLESS STEEL ENCLOSURES OVERVIEW

HOFFMAN offers the largest range of stainless steel enclosure products, the most accessories, and platforms specifically engineered for essential applications including:

- Oil & gas (hazloc and non-hazloc)
- Food & beverage sanitary enclosures
- Chemical and petrochemical
- Pharmaceutical manufacturing
- Pulp and paper plants
- Waste water treatment facilities
- Medical and laboratory



ZONEX ATEX/IEC-CERTIFIED, TYPE 4X

- Type 316 stainless steel ATEX Ex e enclosures
- Designed and certified to meet ATEX Directive 94/9/EC as well as IECEx and AEx standards* in Zone 1 and Zone 2 applications
- Large selection of metric sizes
- Screw-cover and hinged-cover models



GL-SERIES WALL-MOUNT, TYPE 4/4X

- Type 304 stainless steel wall-mount single-door enclosures
- IEC IP66 and UL Type 4/4X rated
- Large selection offered exclusively in metric sizing for both domestic use or on exported equipment
- Includes 3-mm double bit inserts with quarter-turn latching and standard bottom gland plate

* Zonex enclosures are not intended for use in explosion-proof or flame-proof applications



A30S4 FREE-STAND UNIBODY, TYPE 4X

- Rugged metric-sized unibody design
- Designed to house large systems, motor starters, drives, contactors and PLCs, or 19-in. rack components in harsh industrial environments
- Superior strength and vibration resistance
- Single- and two-door models
- Front and/or rear door configurations



WATERSHED WALL-MOUNT AND FREE-STAND, TYPE 4X

- Engineered and patented for use in high-pressure sanitary washdown production environments, particularly food and beverage manufacturing
- The only hygienic designed enclosure line certified by NSF International
- Features that outperform conventional sloped top enclosures, including a reverse-slanted flange trough collar and sloped door edges that facilitate washdown runoff
- Type 304 stainless steel bullet-style lift-off hinges for complete cleaning access
- Seamless foam-in-place, one-piece gasket for superior sealing and protection

For more information: nVent.com/HOFFMAN



HOFFMAN is There, Wherever You Are

AS THE NEED FOR GLOBAL EXPLORATION, MANUFACTURING AND INFRASTRUCTURE EXPANDS, YOU NEED A PARTNER WITH FEET ON THE GROUND

For over 65 years, HOFFMAN brand of enclosures has offered the industry's largest selection of standard enclosures and accessories – over 12,000 SKUs. Design possibilities are endless with the industry's widest array of standard modification options, and Engineered Solutions.

A wellspring of harsh environment experience and a deep history of innovation and industry firsts, combine with vast, global capacity and industry-leading manufacturing competencies. Capabilities include Original Design Manufacturer (ODM) services, New Product Introduction (NPI), prototyping services, integration,

testing and deployment with industry-leading experience in global standards and certifications.

The resources of nVent provide HOFFMAN stainless steel enclosure solutions to industries worldwide with assurance of global ISO 9001 quality and consistency needed to protect and perform reliably in the most punishing conditions. An essential part of an \$8 billion global organization that employs more than 30,000 people worldwide, nVent Equipment Protection Solutions can meet the demands of our customers wherever they do business.



North America

Minneapolis, MN	Tel: +1.763.421.2240
Mexico City, Mexico	Tel: +52.55.5280.1449
Toronto, Canada	Tel: +1.416.289.2770

South America

Sao Paulo, Brazil	Tel: +55.11.5184.2100
Boitura, Brazil	Tel: +55.15.3363.9148

Europe

Betschdorf, France	Tel: +33.3.88.90.64.90
Straubenhardt, Germany	Tel: +49.7082.794.0
Dzierzoniow, Poland	Tel: +48.74.64.63.900
Assago, Italy	Tel: +39.02.5776151.224

Middle East & India

Dubai, United Arab Emirates	Tel: +971.4.378.1700
Bangalore, India	Tel: +91.80.6715.2001

Asia

Shanghai, P.R. China	Tel: +86.21.2412.6943
Singapur	Tel: +65.6768.5800
Shin-Yokohama, Japan	Tel: +81.45.476.0271
Seoul, Korea	Tel: +82.2.2129.7755
Qingdao	Tel: +86.532.8771.6101

Our powerful portfolio of brands:

CADDY ERICO HOFFMAN RAYCHEM SCHROFF TRACER



[nVent.com/HOFFMAN](https://www.nVent.com/HOFFMAN)