

Machines Covered

This Covers the CLeN line of dishwashers including: CLeN, CLeNER and CLeNADV

The below information was taken from and can be found within the instruction manual of any Hobart product, located at: <https://www.hobartcorp.com/resources-hobart>.



⚠ WARNING Disconnect the electrical power to the machine and follow lockout / tagout procedures. There may be multiple circuits. Be sure all circuits are disconnected.

⚠ WARNING When performing service work, corrosive chemicals may be present. Exposure to these chemicals could result in injury. It is very important to follow the manufacturer's instructions as found in the (Material) Safety Data Sheet/(M) SDS. Information regarding the Personal Protective Equipment (PPE) requirements can be found in the (M) SDS that accompanies product or can be found online.

Fill/Rinse System

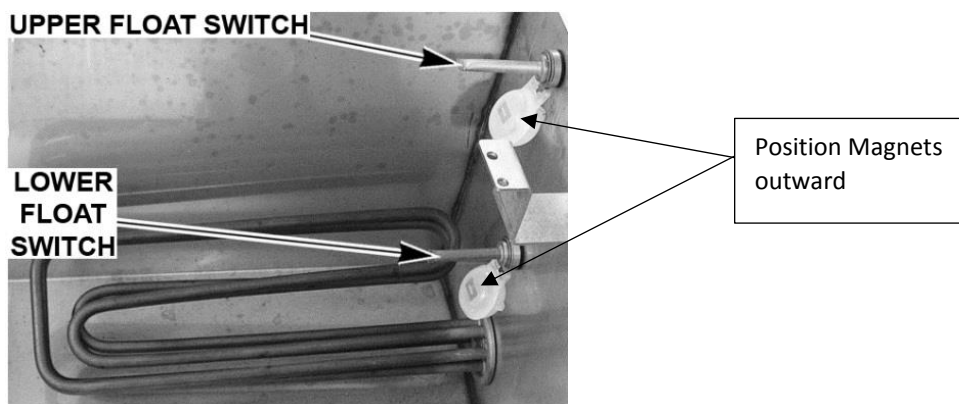
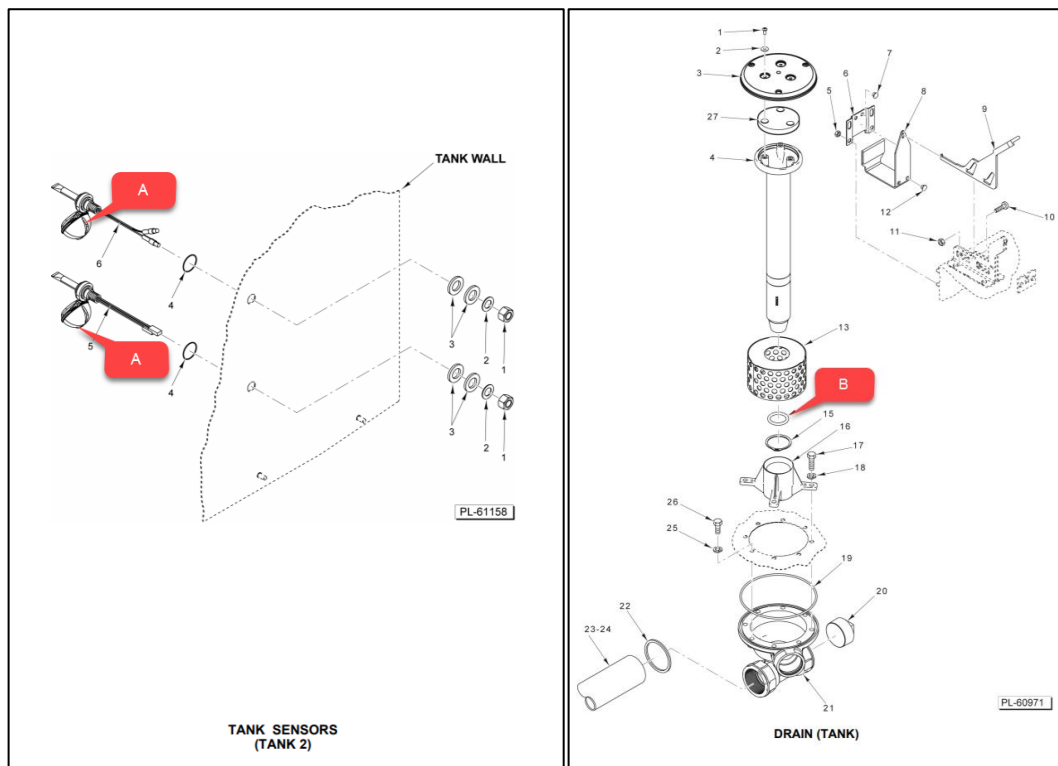
✓ = PROCESS COMPLETED

Task	Part	Qty	Comments	<input type="checkbox"/>
A: Replace vacuum breaker kit.	00-292910	1	---	<input type="checkbox"/>
B: Clean rinse arms and replace O-Rings.	00-067500-00007	2	---	<input type="checkbox"/>
C: Replace rinse arm strainers.	00-936197	2	---	<input type="checkbox"/>
D: Replace final rinse nozzles.	00-893535	11	---	<input type="checkbox"/>

Drain System

✓ = **PROCESS COMPLETED**

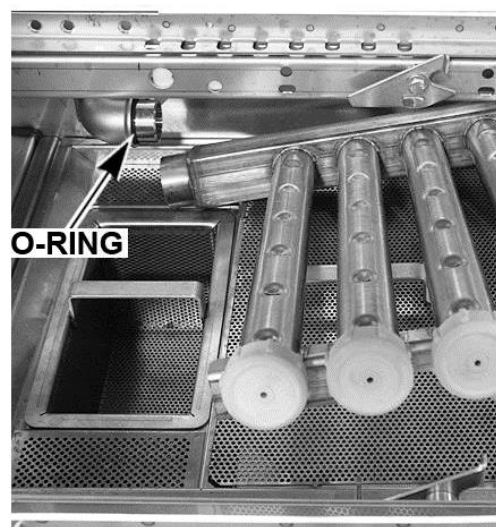
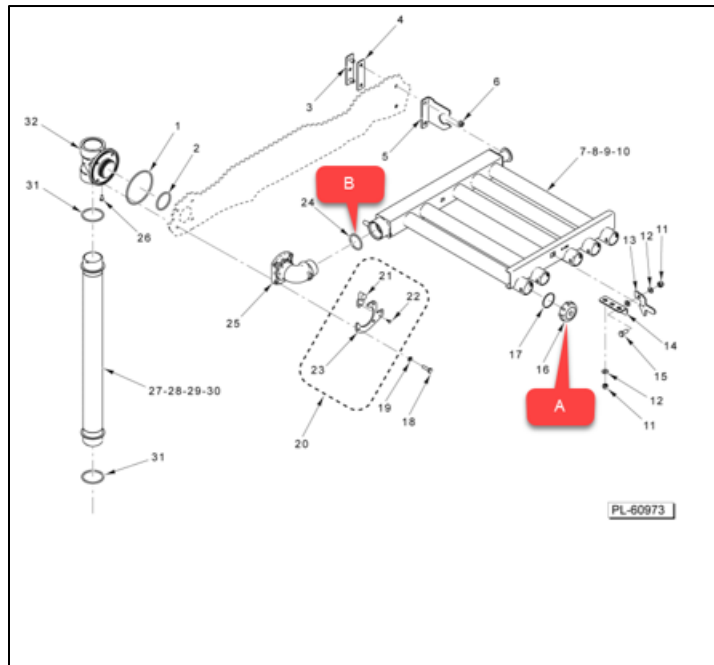
Task	Part	Qty	Comments	<input type="checkbox"/>
A: Replace fill floats.	00-122674	2	CL64 only	<input type="checkbox"/>
B: Replace standpipe O-ring	00-067500-00120	1	---	<input type="checkbox"/>



Wash Tank/Rinse Tank System

✓ = PROCESS COMPLETED

Task	Part	Qty	Comments	<input type="checkbox"/>
A: Replace upper and lower wash arm end caps.	00-919363	9	CL44/CL54 only	<input type="checkbox"/>
		17	CL64 only	<input type="checkbox"/>
B: Replace upper and lower wash arm manifold O-ring.	00-067500-00014	2	---	<input type="checkbox"/>

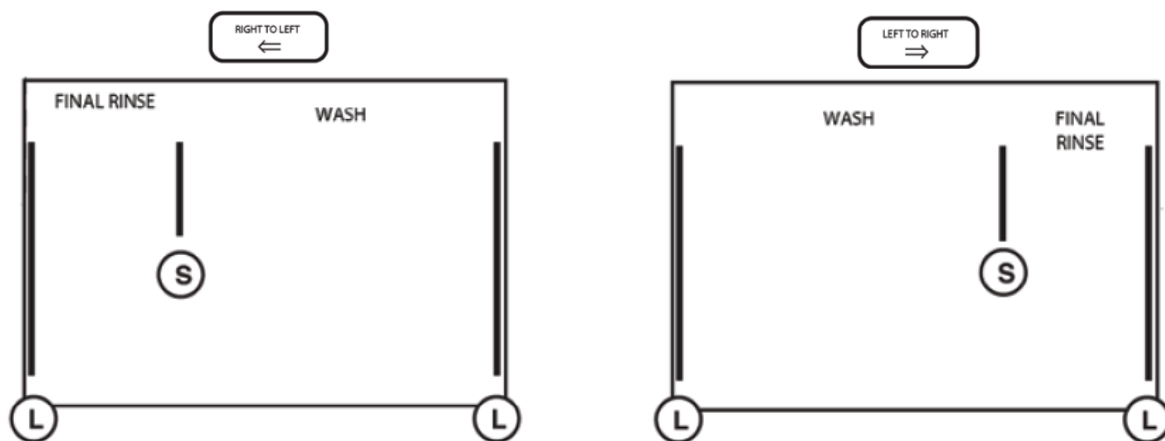


Curtains (CLeN)

✓ = PROCESS COMPLETED

Task	Part	Qty	Comments	<input type="checkbox"/>
Replace curtains.	---	---	---	<input type="checkbox"/>
L: Curtain, Splash, 4-Ply (STD)	00-919758	2	---	<input type="checkbox"/>
L: Curtain, Splash, 4-Ply (HTS)	00-919975	2	---	<input type="checkbox"/>
S: Curtain, Splash (Short)	00-919509	1	---	<input type="checkbox"/>
CO: Curtain (Carry Over)	00-936922	1	CL64 Only	<input type="checkbox"/>
M: Curtain, Wash, 3-Ply (STD)	00-936428	1	CL64 Only	<input type="checkbox"/>
M: Curtain, Wash, 3-Ply (HTS)	00-936429	1	CL64 Only	<input type="checkbox"/>

CL44eN, CL54eN
CL44eNER, CL54eNER
CL44eNADV, CL54eNADV



CL64eN
CL64eNER
CL64eNADV

