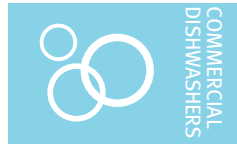




Project _____
AIA # _____ SIS # _____
Item # _____ Quantity _____ C.S.I. Section 114000



CL64T

Industrial Tote Washer



Showing with optional HPBO



SPECIFIER STATEMENT

Specified tote washer will be Hobart CL64T industrial electric tank heat model. Features include Complete Delime™ with Delime Notification, Auto Dispensing and Booster Guard™, capless anti-clogging wash arms, 114 gallons per hour pumped final rinse, insulated ergonomic cabinet style doors, touchscreen controls with WiFi connectivity. The wash tank utilizes durable precision pressure sensor monitors in lieu of conventional mechanical floats.

STANDARD FEATURES

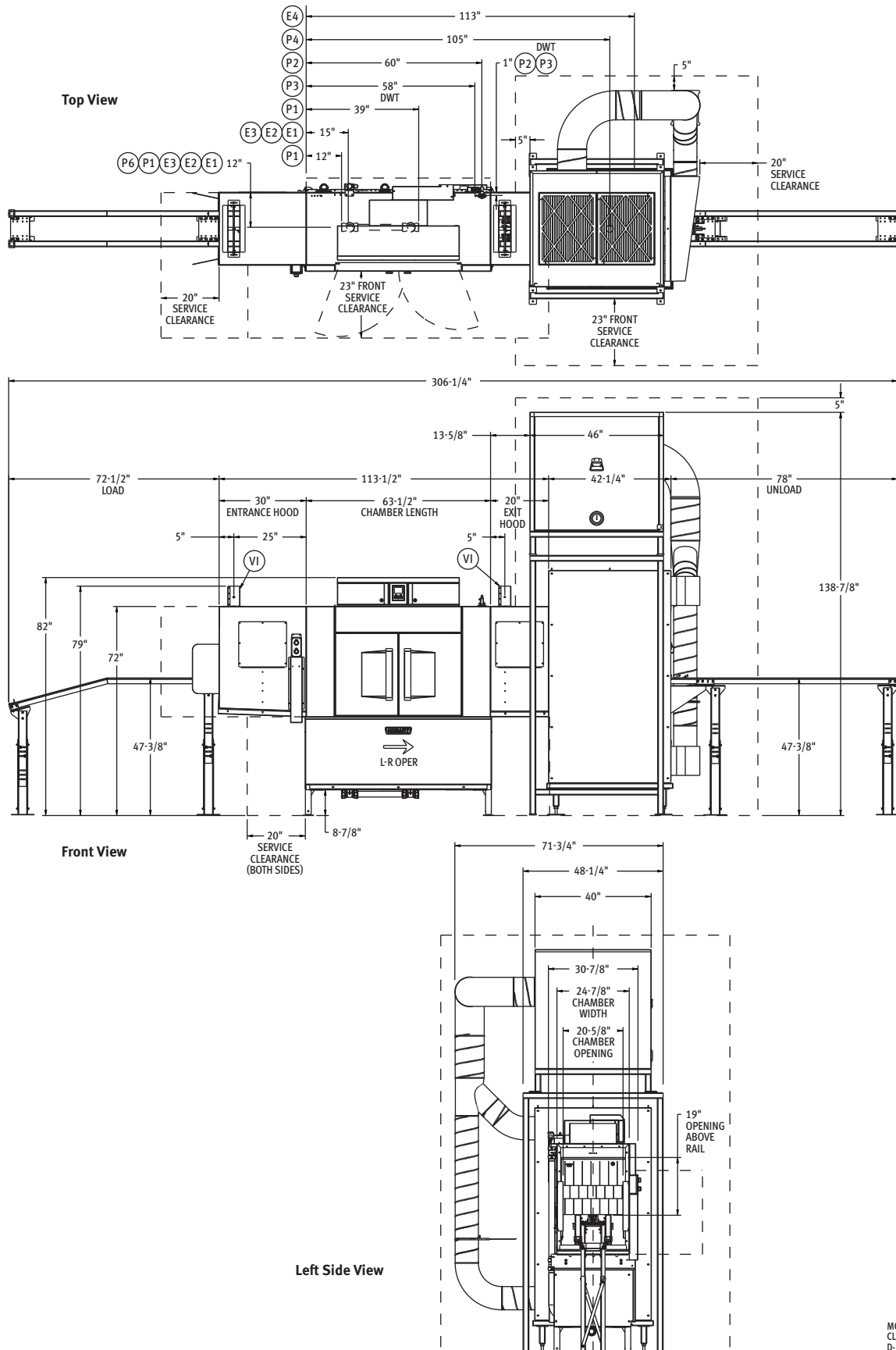
- + 114 gallons per hour pumped final rinse
- + 6.3 feet per minute conveyor speed
- + Complete Delime™ with Delime Notification, Auto Dispensing and Booster Guard™
- + Internal stainless steel pressure-less 24 kW booster heater (70°F rise) — Single point electrical connection standard
- + Capless, anti-clogging wash arms
- + Large double door opening for ease of cleaning
- + Doors are insulated & hinged with door interlock switches
- + User-friendly smart touchscreen controls with diagnostics & troubleshooting
- + WiFi connectivity
- + SmartConnect app and cloud with machine status, temperature logs, error code reporting, and cost, consumption and usage analysis
- + Energy saver mode (programmable auto-shut down)
- + Self-aligning wash manifolds
- + Stainless steel self-draining pump and impeller
- + Sloping scrap screens and deep scrap baskets
- + Rapid return drive mechanism
- + Service diagnostics
- + Door actuated drain closure
- + Vent fan control
- + Convertible hot water or low temperature final rinse
- + Booster heater control

OPTIONS & ACCESSORIES (Available at extra cost)

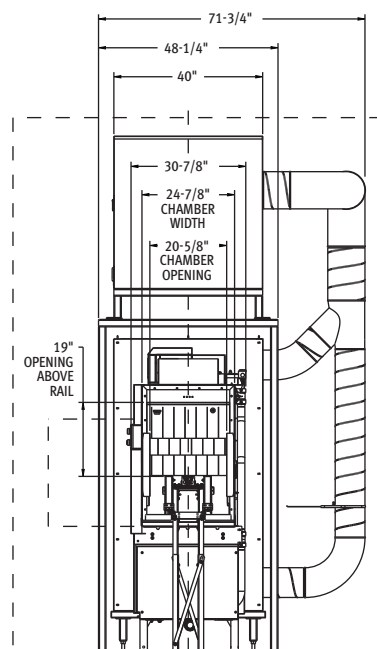
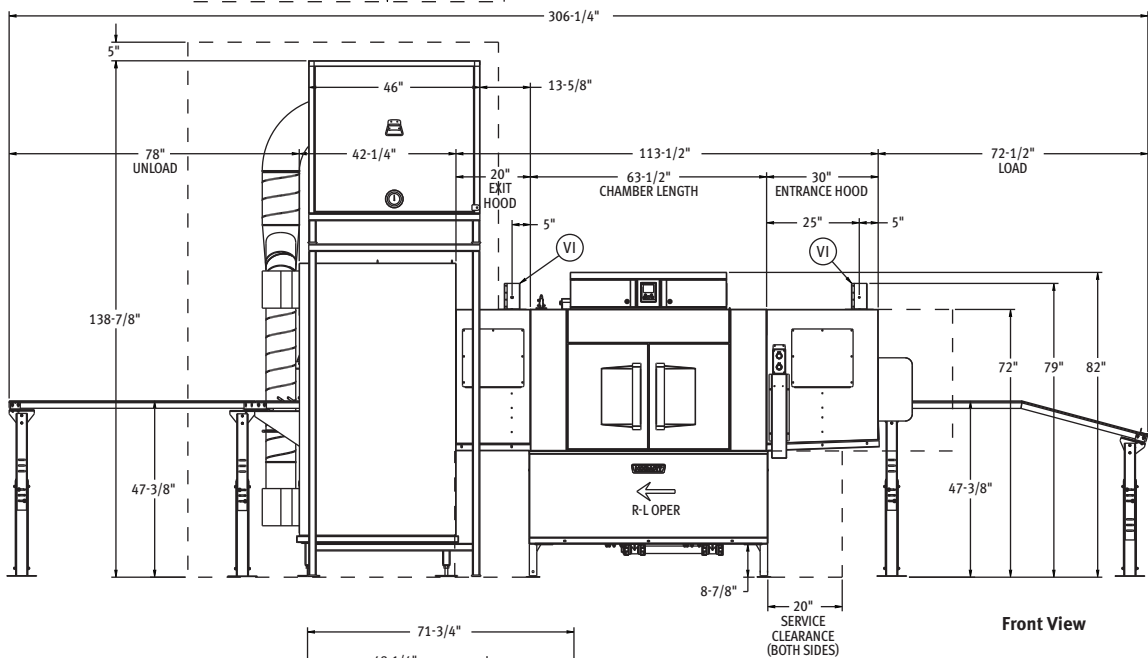
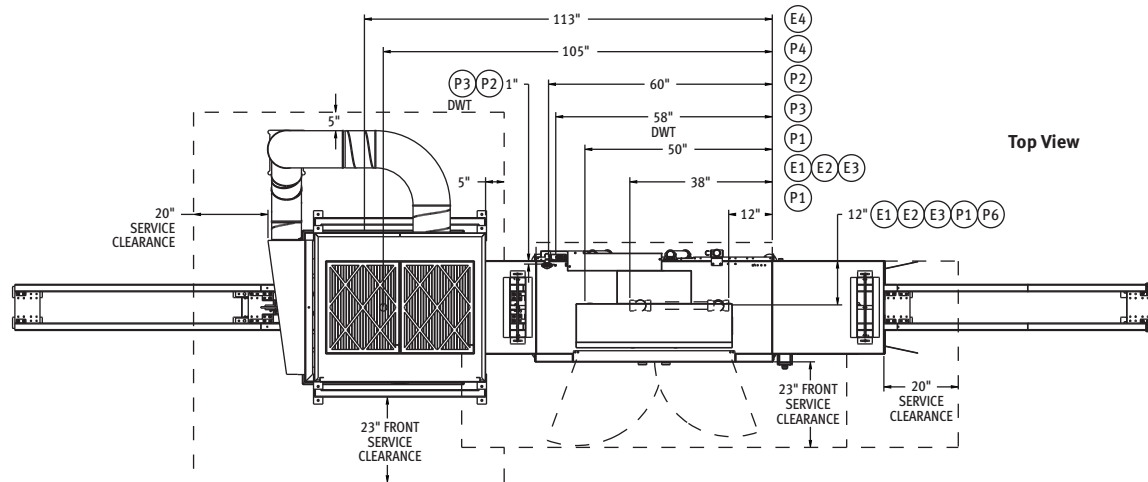
- ☐ 20HP high pressure blow off (Optional Stand mounted or floor mounted)
- ☐ Optional load and unload rail lengths available
- ☐ Drain water tempering kit

CL64T INDUSTRIAL TOTE WASHER

Approved by _____ Date _____ Approved by _____ Date _____



MODEL:
CL64T
D-563297
REV A1



MODEL:
CL64T
D-563297
REV A1



LEGEND

Electrical Connections	
SINGLE POINT CONNECTION	
E1	Electric connection, single point: motors, controls, tank heat, with/without 24kW electric booster heater, 78-1/2" AFF.
DUAL POINT CONNECTION WITH BOOSTER	
E2	Electric connection: motors, tank heat, 75-1/2" AFF.
E3	Electric connection: controls, 24kW booster heater, 78-1/2" AFF.
OPTIONAL HIGH PRESSURE BLOWOFF (HPBO)	
E4	Electric connection: 20 HP blower stand mounted, 95" AFF.
E5	Electric connection: 20 HP blower floor mounted, 18" AFF.
Plumbing Connections	
P1	Drain: 2" FPT, 7-3/8" AFF, two possible connections; may be drained to either side of drain housing, plug opposite side.
P2	Common hot water connection: 1/2" FPT, 12" AFF. See plumbing notes for required temperatures.
OPTIONAL DRAIN WATER TEMPERING	
P3	Cold water connection: 1 1/2" FPT, 12" AFF, cold temp 80°F.
OPTIONAL HIGH PRESSURE BLOWOFF (HPBO)	
P4	Drying zone drain: 1.5" FPT, 8" AFF.
Ventilation Connections	
V1	Optional vent hoods: 4" x 16" vent stack with damper. Load end 200 CFM, unload end 400 CFM.

WARNING: Electrical and grounding connections must comply with the applicable portions of the National Electrical Code and/or other local electrical codes.

CAUTION: Certain materials including silver, aluminum, and pewter are attacked by sodium hypochlorite (liquid bleach).

ATTN: Plumbing connections must comply with applicable sanitary, safety and plumbing codes.

SPECIFICATIONS

Capacities

Wash Tank (U.S. gallons)	23
Power Rinse Tank (U.S. gallons)	22
Conveyor Speed (feet per minute)	6.3

Motor Horsepower

Drive	1/6
Wash	2
Power Rinse	2
Final Rinse	2/3

Water Consumption

U.S. Gallons per Hour	114
Peak Drain Flow (U.S. gallons per minute)	38

Heating

Tank Heat, Electric (kW)	25
Electric Booster (built-in) (kW for 70°F rise)	24
Electric Booster (field conversion) (kW for 40°F rise)	12

Venting (Direct venting recommended)

Load End (minimum CFM)	200
Unload End (minimum CFM)	400

Shipping Weight (approximate)

CL64T.	1,000 lbs.
Blow-off.	800 lbs.
Blower and Motor.	800 lbs.

Crated Dimensions (CL64T) 132"H x 49"W x 91"D

Crated Dimensions (Blow-off) 60"H x 55"W x 95"D

Crated Dimensions (Blower and Motor) 60"H x 48"W x 92"D



Plumbing Notes:

Water hammer arrestor (meeting ASSE-1010 standard or equivalent) to be supplied (by others) in common water supply line at service connection.

Recommended water hardness to be 3 grains or less for best results.

Minimum incoming hot water temperatures:

110°F for 24kW internal booster

140°F for 12kW field converted internal booster

180°F without internal booster for high temperature sanitizing

130°F without internal booster for chemical sanitizing
Building flowing water pressure to tote washer is 20 to 65 PSI at the machine. For convenience when cleaning, water tap should be installed near machine with heavy duty hose and squeeze valve.

Miscellaneous Notes:

All dimensions taken from floor line may be increased approximately 3/4" or decreased 1/2".

For optimal performance, Hobart recommends maintaining a room temperature of 65°F (18°C) or higher, as lower temperatures may hinder the machine's capacity to operate effectively (with lower performance as ambient temperature decreases).

Electrical Note:

Tote washer not provided with internal GFCI protection.

E1	Single Point Electrical Connection with Internal Booster	
Voltage	(E1) Motors, Controls, Tank Heat, 24kW Booster Heater	
	Rated Amps	Minimum Supply Circuit Ampacity/ Maximum Protective Device
208/60/3	162.3	200
240/60/3	148.5	175
480/60/3	76.3	90
600/60/3	58.8	70

E2	Dual Point Electrical Connection with Internal Booster E3 (Field Conversion Only)			
E3	(E2) Motors, Tank Heat		(E3) Controls, 24kW Booster Heater	
Voltage	Rated Amps	Minimum Supply Circuit Ampacity/ Maximum Protective Device	Rated Amps	Minimum Supply Circuit Ampacity/ Maximum Protective Device
208/60/3	87.2	110	75.1	90
240/60/3	82.3	100	66.2	80
480/60/3	41.8	50	34.5	40
600/60/3	30.6	40	28.2	35

E4	High Pressure Blow-Off (HPBO)	
E5	High Pressure Blow-Off (HPBO)	
Voltage	Separate Service Connection	
	E4 or E5: Blower Motor	
	Rated Amps	Minimum Supply Circuit Ampacity/ Maximum Protective Device
208/60/3	56	80
240/60/3	56	80
480/60/3	27	35
600/60/3	21	30