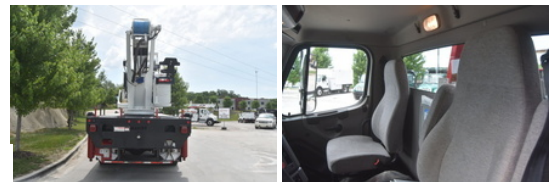


Elliott E145 2015 Freightliner 108SD

Call for price

Stock RA215225 VIN 3ALKG5CY0FDGB1894



Detailed Specification

Engine Make	Cummins	Engine HP	350
Engine Model	ISL D	Transmission	Automatic
Axle Config	6x6	Meter Reading	14192.0
FA Capacity	16000	Characteristic Type	145' Bucket
Front End Ratio	4.92	Outriggers	Hydraulic Out + Down
RA Capacity	40000	Basket Size	2 Person
Rear End Ratio	4.88		
Cab Type	Regular Cab		
Attached Body	E145		
Wheelbase	271		
Basket Rated Capacity	1200 LBS.		

