



Project _____
 AIA # _____ SIS # _____
 Item # _____ Quantity _____ C.S.I. Section 114000



WRAPPING SYSTEM Accessories



HAND-WRAP STATION

MODEL

- W32-6** Hand-wrap station

STANDARD FEATURES

- + Easy to load film
- + Low-temperature film cut-off system
- + Stainless steel element
- + 2-roll film capacity – 8" to 18" wide; Top roll limited to 14" wide
- + Fingertip film selection
- + Maximum roll outside diameter 9½"
- + 3" ID core plugs standard
- + Rugged aluminum and stainless steel construction
- + Adjustable height from 37" to 39½"
- + Operates in all ambient temperatures
- + Furnished with all Hobart Semi-Automatic CLA Systems unless specified otherwise
- + Compact 12½" deep x 25" wide design

OPTION (Available at extra cost)

- 55A-SHELFA – Platter shelf

SPECIFICATIONS

Construction: Rugged aluminum frame and roll core plugs with stainless steel wrapping surface and roll shafts plated steel.

Dimensions: 12½" deep x 25" wide.

Optional Platter: 55A – Stainless steel platter shelf w/aluminum mounting brackets. 22" L x 14" W. 10 lbs. shipping weight.

Electrical: 100-120/60/1, input 1 amp.

Shipping Weight: **W32** – 50 lbs.; **55A** – 10 lbs.

SPECIFIER STATEMENT

Hobart offers a variety of wrapping system accessories to customize your wrapping solution and arrangement to meet your needs.

WRAPPING SYSTEM ACCESSORIES

Approved by _____ Date _____ Approved by _____ Date _____



POWERED SEALER BELT

MODEL

- SP-5** Powered sealer belt

STANDARD FEATURES

- + 12" wide sealer belt
- + Flexible working height 35½" to 38"
- + Belt speed 330" per minute

ACCESSORIES (Available at extra cost)

- Requires 51A sealer legs or 52A sealer support, or both depending on system ordered

SPECIFICATIONS

Construction: Heavy duty stainless steel frame. Durable sealer belt.

Dimensions (including legs): 36"H x 42"L x 16¾"W x 3⅛"D (9"D at motor location)

Electrical: 208-240/60/1, 3 wire, 15 amps. Thermostatic heat control. Motor, subfractional H.P.

Shipping Weight: **SP-5** – 75 lbs.; **51A** – 10 lbs.; **52A** – 8 lbs.



ROLLER/DISCHARGE TABLE

MODEL

- HRT5-3** 36"L work area, 48"L adjustable conveyor, 28" H

STANDARD FEATURES

- + Work areas are 36" to 48" long
- + Available with single or double tiered label dispenser

ACCESSORIES (Available at extra cost)

- HRT-LD136 – Single label dispenser (36"W table)
- HRT-LD236 – Double tier label dispenser (36"W table)
- HRT-LABKIT – 49 additional round disks

SPECIFICATIONS

Construction: Heavy duty stainless steel.

Shipping Weight: **HRT5-3** – 209 lbs.; **HRT-LD136** – 23 lbs.; **HRT-LD236** – 24 lbs.; **HRT-LABKIT** – 2 lbs.





ROTARY BIN

MODEL

□ RBG-2 Rotary bin

SPECIFICATIONS

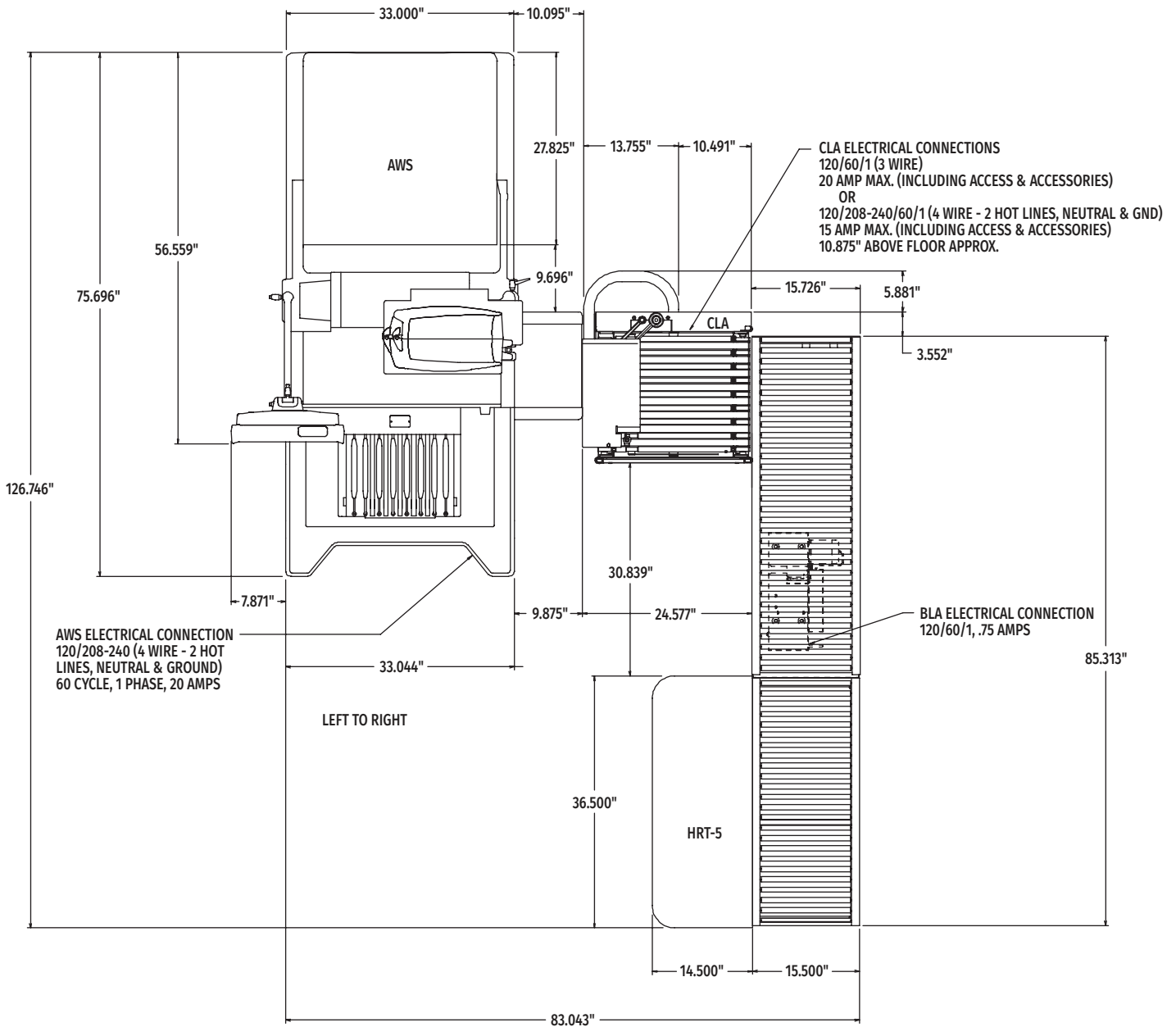
Construction: Aluminum tub and stainless steel frame.

Dimensions: Adjustable height from 28⁷/₈" to 37¹/₂".

Shipping Weight: 65 lbs.



DETAILS AND DIMENSIONS



AWS/Access CLA System with Roller Conveyor and HRT

As continued product improvement is a policy of Hobart, specifications are subject to change without notice.