



Project _____
AIA # _____ SIS # _____
Item # _____ Quantity _____ C.S.I. Section 114000

COMPACT SANDWICH PREP TABLES

with Flat Cover/Self-Contained
UST 60" Wide Models



2 Drawer Model Shown



Models listed to the applicable UL, CSA and NSF standards by an approved NRTL. Consult the factory or unit data plate for additional information.

STANDARD PRODUCT FEATURES

- High Quality Stainless Steel Exterior Top, Sides & Drawers
- Durable, Corrosion Resistant Anodized Aluminum Interior
- Provides NSF7 Performance, Even When Using 6" Deep Pans
- Standard Work Height 34 $\frac{3}{8}$ " on 4" casters
- Environmentally Friendly, Low GWP R-290 Refrigerant
- Top Cut-Outs Accommodate 1/6 Size Pans (divider bars and 4" deep plastic 1/6 size pans provided)
- Reinforced Pan Ledge (holds pans securely level)
- Reversible, Full Length White Nylon Cutting Board
- Stainless Steel Insulated Pan Lid with (2) Open Positions
- Automatic Non-Electric Condensate Evaporator
- Full-Length Drawer Handle with Gasket Guard
- EZ-Clean™ Drawer Gasket(s)
- Self-Closing Drawers with Stay Open Feature
- Heavy-Gauge Stainless Steel Drawer with Slide
- Interior Mounted Thermometer
- 8' Cord & Plug Attached
- Set of (6) 4" Casters

ACCESSORIES & OPTIONS (*field installed)

- CK21 (six 6" (15.2 cm) high casters for 60" models)
- CK25 (six 3 $\frac{1}{2}$ " (8.9 cm) high casters for 60" models)
- CK27 (six 2 $\frac{1}{2}$ " (6.4 cm) high casters for 60" models)
- LK6 (six 6" (15.2 cm) high legs for 60" models)
- Optional accessory kits shipped separately for field installation

AVAILABLE CONFIGURATIONS

60" Wide Four Drawer Models

Model	Model Type
UST6012-DD	60" Wide, 12 Pans on Top Rail / 9 Pans in Top Drawers / 6 Pans in Bottom Drawers
UST6024-DD	60" Wide, 24 Pans on Top Rail / 9 Pans in Top Drawers / 6 Pans in Bottom Drawers

FACTORY INSTALLED OPTIONS

- Stainless Steel Finished Back (model numbers will have '-SB' suffix)

Approved by _____ Date _____ Approved by _____ Date _____

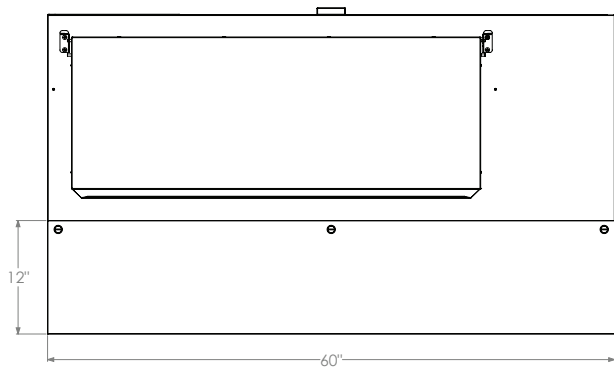


COMPACT SANDWICH PREP TABLES

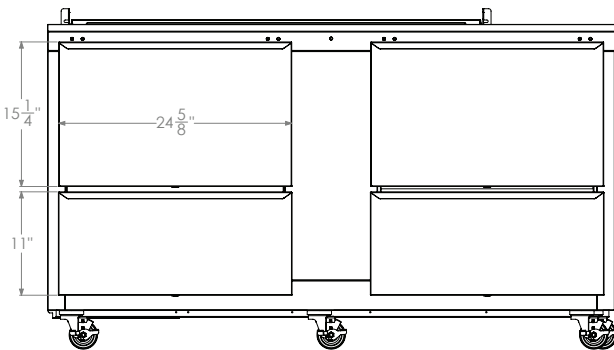
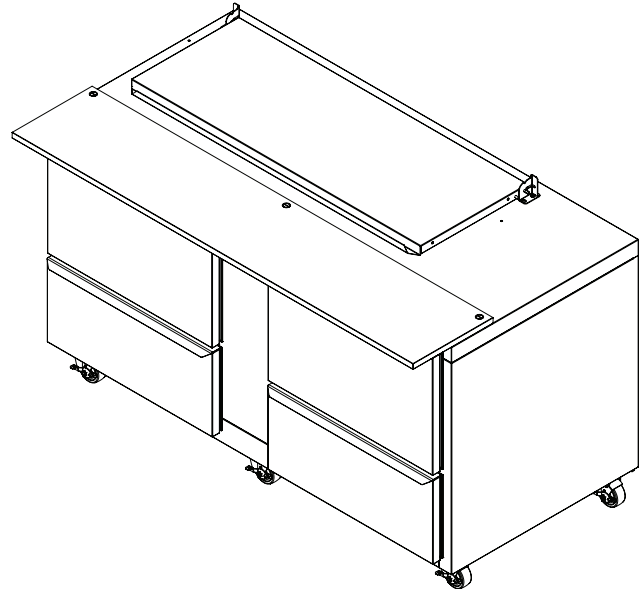
with Flat Cover/Self-Contained
UST 60" Wide Models

MODELS:

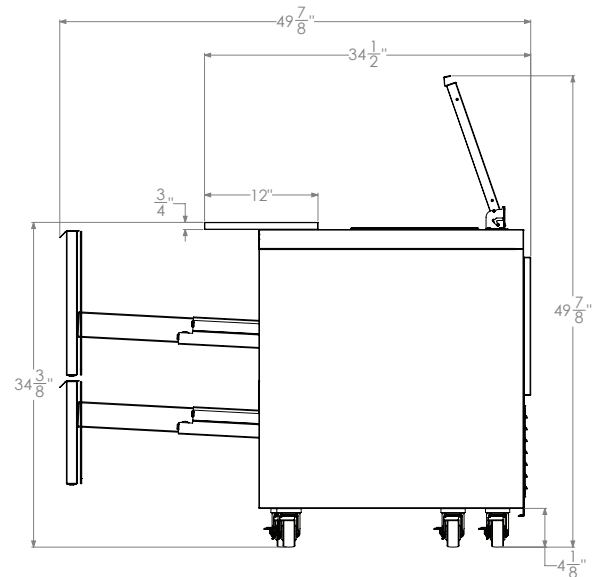
UST6012-DD



TOP VIEW



FRONT VIEW



SIDE VIEW

CAD and/or Revit Files Available

<https://traulsen.klccad.com/>



COMPACT SANDWICH PREP TABLES

with Flat Cover/Self-Contained
UST 60" Wide Models

MODELS

UST6012-DD, UST6024-DD

EQUIPMENT SPECIFICATIONS

MODELS	UST6012		UST6024	
DIMENSIONAL DATA				
Drawers per cabinet	4			
# of 1/6 Size Pan Top	12		24	
# of 1/6 Size pans per drawer (top/bottom)	9/6			
# of 1/6 Size pans per unit	42		54	
Length - overall in.	60 (152.4 cm)			
Depth - overall in. ¹	34½ (87.6 cm)			
Depth - cutting board in.	12 (30.5 cm)		8 (20.3 cm)	
Width - drawer in.	24 ⅝ (62.5 cm)			
Height - overall on 4" casters	36 (91.4 cm)			
Work Height on 4" casters	34¾ (87.3 cm)			
ELECTRICAL DATA (NEMA 5-15P attached)				
Voltage	115/60/1			
Full Load Amperes	7.2			
REFRIGERATION DATA				
Refrigerant	R-290			
Refrigerant Charge oz.	5 (141.8 g)			
BTU/HR² HP	1525 ¼ HP			
SHIPPING DATA				
Length - crated in.	69 (175.3 cm)			
Width - crated in.	42 (106.7 cm)			
Height - crated in.	41 (104.1 cm)			
Volume - crated cu. ft.	91 (2576.8 l)			
Weight - crated lbs.	368 (167 kg)		351 (159 kg)	

NOTES:

- Overall depth figure includes standard cutting board
- Compressor BTU based on a 90°F ambient and 20°F evaporator

When ordering please specify: Voltage, Hinging, and Options.

Equipped with one NEMA 5-15P Plug



CONSTRUCTION, HARDWARE, INSULATION

Cabinet exterior front, one piece sides, pan lid, and drawers are constructed of heavy gauge stainless steel. Cabinet interior is constructed of anodized aluminum.

The exterior cabinet back and bottom are constructed of galvanized steel. The cabinet is insulated with an average of 2" thick high density, non-CFC, foamed in place polyurethane.

A 3/4" thick, full-length, reversible white nylon cutting board is supplied standard.

PANS & COVER

Each model is supplied standard with its full compliment of 4" deep plastic 1/6 size pans and stainless steel pan dividers. The insulated lift-up pan cover is constructed of stainless steel, and is easily removable for cleaning.

REFRIGERATION SYSTEM

A balanced, rear mounted, front breathing, self-contained refrigeration system using environmentally-friendly, low GWP R290 refrigerant is provided. It features a capillary tube metering device, air-cooled hermetic compressor, a forced air evaporator coil and a non-electric condensate evaporator. An 8' cord and plug is provided. Standard operating temperature of the refrigerated base is 34 to 38°F (1.1° to 3.3°C).

CONTROLLER

An electronic digital control is supplied standard. It includes a 3-Digit LED display, and a Fahrenheit or Celsius temperature scale display capability.

DRAWERS

They are constructed using heavy gauge stainless steel drawer slides and 1-5/16" diameter stainless steel rollers. Gasket profile and material simplify cleaning and increase overall gasket life. Drawers include both a self-closing and stay-open feature.

WARRANTY

Both a six year parts and labor warranty and a seven year compressor parts warranty (self-contained models only) are provided standard.