



Project _____
AIA # _____ SIS # _____
Item # _____ Quantity _____ C.S.I. Section 114000



SIDE LOADING OPTION

For CLeN Series



MODELS

- ☐ **SL23** Adds 23" to length of machine
- ☐ **SL30** Adds 30" to length of machine

STANDARD FEATURES

- + Automatically indexes rack at a 90° angle
- + Operates off the drive of the CLeN and requires no additional energy consumption
- + Easy to install
- + Stainless steel construction
- + Low maintenance
- + Easy to use
- + Saves valuable floor space



SPECIFIER STATEMENT

The Side Loader option can be adapted to any Hobart non-CLCS Dishwasher. Model SL-23 adds 23" to length of machine, SL-30 adds 30" to length of machine.

CLeN SERIES – SIDE LOADING OPTION

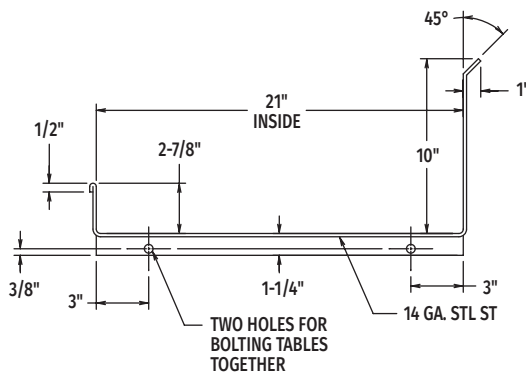
Approved by _____ Date _____ Approved by _____ Date _____

Construction: Sump, back and end shields of formed 14-gauge stainless steel, heliarc-welded, with covered corners and all joints ground smooth and polished. Attached to dishmachine chamber with stainless steel bolts and reinforced with rigid stainless steel diagonal supports. Sump has 1½" drain connection and perforated stainless steel strainer cover over drain opening.

Conveyor: Two stainless steel rack slides welded to cross member support. Drive member is single stainless steel pawl, connected to dishmachine conveyor by a stainless steel rod. Rack drive pawl operates on two rollers, supported by two stainless steel rods and is beveled to permit rack to slide easily into side-loading extension.

Shipping Weight: Ships separately weighing approximately 100 lbs. Field mount standard.

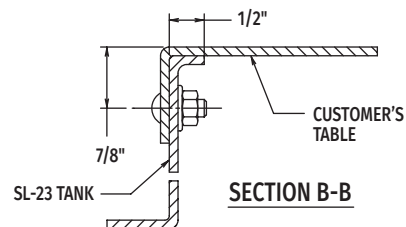
Note: Racks must have center and side index strips.



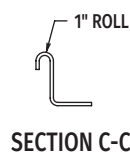
SECTION A-A

VIEW LOOKING TOWARD SL-23 TANK
THROUGH CUSTOMER'S TABLE

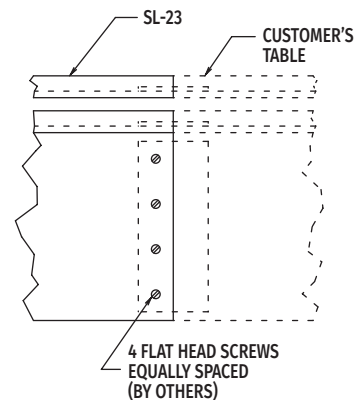
Model	Dimension A
CL44eN	35-1/4"
CLPS66eN	57-1/4"
CL54eN	35-1/4"
CLPS76eN	57-1/4"
CL64eN	45-3/16"
CLPS86eN	67-3/16"



SECTION B-B



SECTION C-C



SECTION D-D

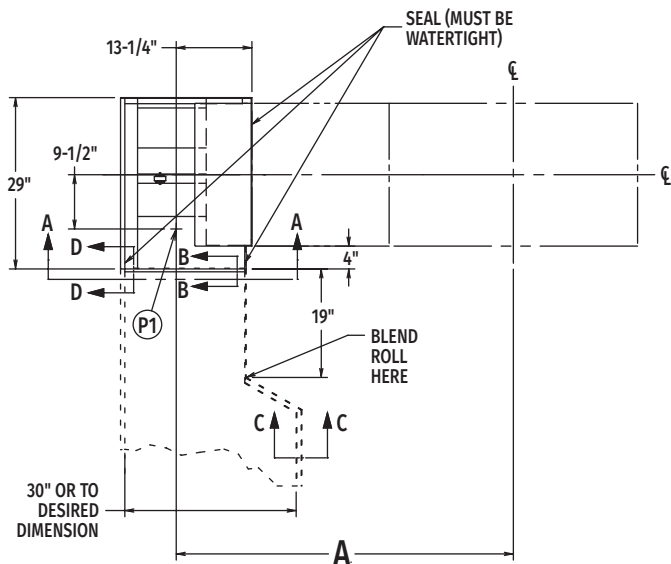
WARNING: Electrical and grounding connections must comply with the applicable portions of the National Electrical Code and/or other local electrical codes.

Plumbing connections must comply with applicable sanitary, safety and plumbing codes.

Note:

1. All dimensions taken from floor line may be increased approximately 3/4" or decreased 1/2". For dimensions not shown, see specification sheet for model specified.

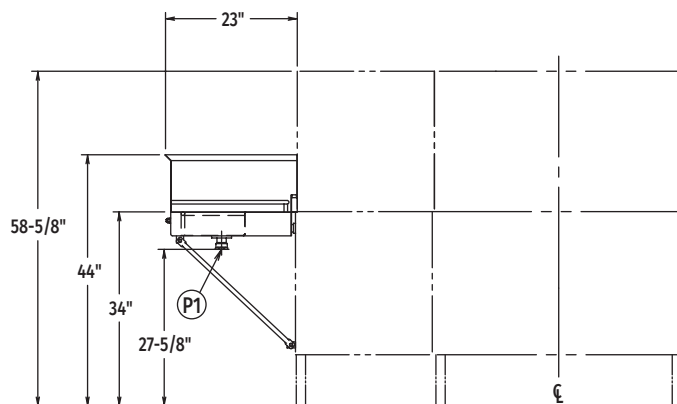
SL23 Side Loader Left to Right Operation



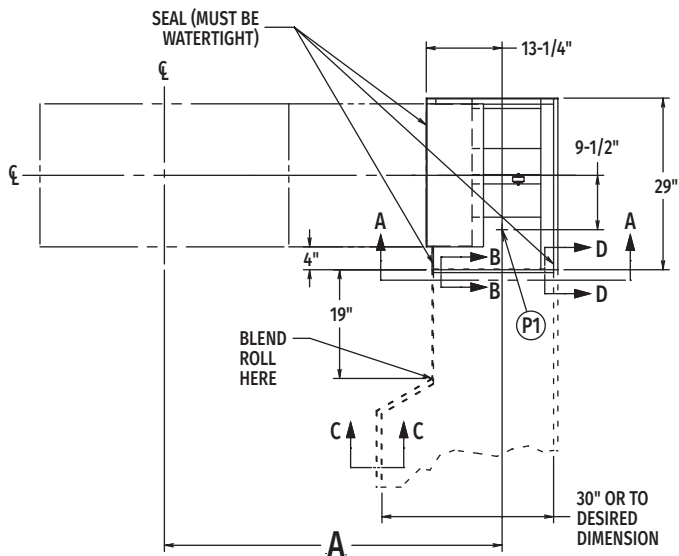
MODEL:
CLeN
23" SIDE LOADER
L-R OPERATION
D-936611
REV C

LEGEND

Plumbing Connection	
P1	Drain connection: 1-1/2" FPT.



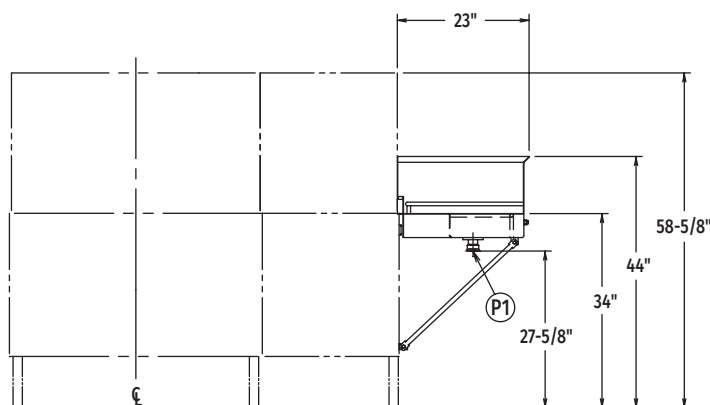
SL23 Side Loader Right to Left Operation



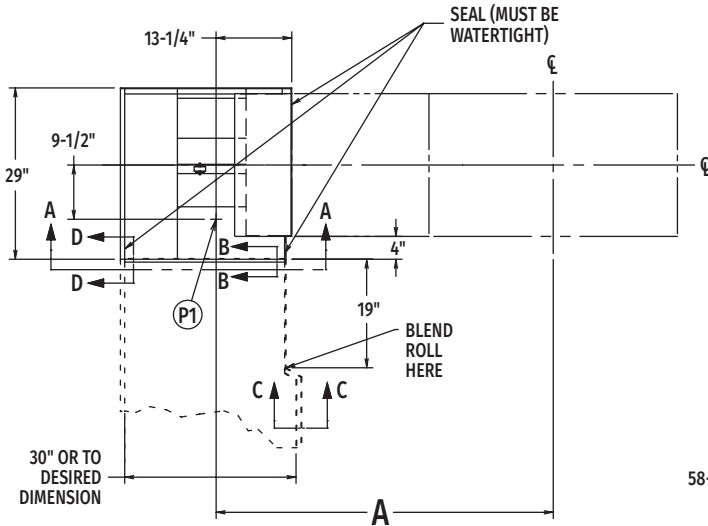
MODEL:
CLeN
23" SIDE LOADER
R-L OPERATION
D-936610
REV C

LEGEND

Plumbing Connection	
P1	Drain connection: 1-1/2" FPT.



SL30 Side Loader Left to Right Operation

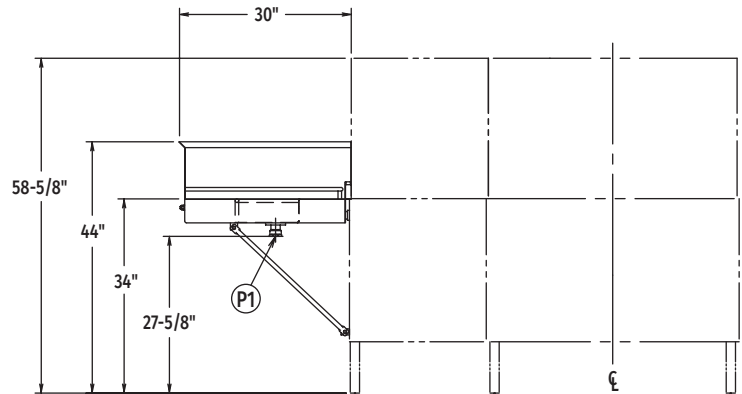


MODEL:
CLeN
30" SIDE LOADER
L-R OPERATION
D-936613
REV C

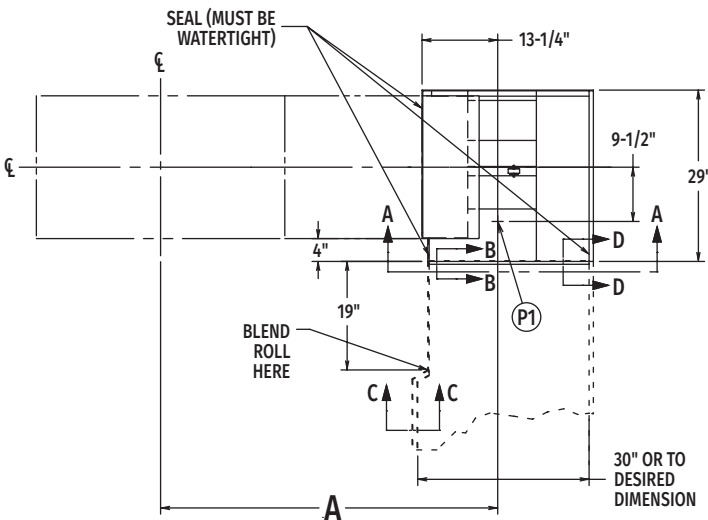
LEGEND

Plumbing Connection

P1 Drain connection: 1-1/2" FPT.



SL30 Side Loader Right to Left Operation



MODEL:
CLeN
30" SIDE LOADER
R-L OPERATION
D-936612
REV C

LEGEND

Plumbing Connection

P1 Drain connection: 1-1/2" FPT.

