



## Custom Truck One Source

Kansas City, MO

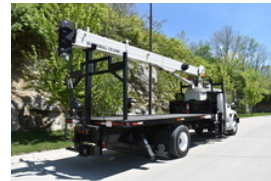
Phone: (816) 558-7290

<https://www.customtruck.com/locations>

### National NBT1560 2012 International 4300

**\$ 70,500**

Stock RA216326 VIN 3HAJTSKN2CL450333



#### Detailed Specification

|                       |                |                            |                      |
|-----------------------|----------------|----------------------------|----------------------|
| <b>Engine Make</b>    | IHC            | <b>Engine HP</b>           | 240                  |
| <b>Engine Model</b>   | MaxxForce DT D | <b>Transmission</b>        | Manual               |
| <b>Axle Config</b>    | 4x2            | <b>Meter Reading</b>       | 12841.0              |
| <b>FA Capacity</b>    | 13000          | <b>Deck Length</b>         | 18'                  |
| <b>RA Capacity</b>    | 20000          | <b>Characteristic Type</b> | 15 Ton Crane         |
| <b>Rear End Ratio</b> | 4.88           |                            |                      |
| <b>Cab Type</b>       | Regular Cab    | <b>Crane Rating</b>        | 15 Ton               |
| <b>Attached Body</b>  | NBT1560        | <b>Outriggers</b>          | Hydraulic Out + Down |
| <b>Wheelbase</b>      | 233            |                            |                      |



DISCLAIMER: Price quoted includes any applicable FET. Quoted price is Ex Works and does not include any freight / delivery charges, sales tax, titling fees, or registration fees. Specifications are believed to be correct but may contain errors and/or omissions. Pictures are representative and may not be identical. Description and Images © Custom Truck One Source