



Project _____
AIA # _____ SIS # _____
Item # _____ Quantity _____ C.S.I. Section 114000

COMPACT SANDWICH PREP TABLES

with Flat Cover/Self-Contained
UST 72" Wide Model



2 Drawer Model Shown



Models listed to the applicable UL, CSA and NSF standards by an approved NRTL. Consult the factory or unit data plate for additional information.

AVAILABLE CONFIGURATIONS

72" Wide Four Drawer Model

Model	Model Type, 1/6 Pan Capacity
UST7230-DD	72" Wide, 30 Pans on Top Rail / 8 Pans per Drawer

STANDARD PRODUCT FEATURES

- High Quality Stainless Steel Exterior Top, Sides & Drawers
- Durable, Corrosion Resistant Anodized Aluminum Interior
- Provides NSF7 Performance, Even When Using 6" Deep Pans
- Standard Work Height 34⁵/₈" on 4" casters
- Environmentally Friendly, Low GWP R-290 Refrigerant
- Top Cut-Outs Accommodate 1/6 Size Pans (divider bars and 4" deep plastic 1/6 size pans provided)
- Top Rails & Drawers Accommodate 6" Deep Pans
- Reinforced Pan Ledge (holds pans securely level)
- Reversible, Full Length White Nylon Cutting Board
- Stainless Steel Insulated Pan Lid with (2) Open Positions
- Automatic Non-Electric Condensate Evaporator
- Full-Length Drawer Handle with Gasket Guard
- EZ-Clean™ Drawer Gasket(s)
- Self-Closing Drawers with Stay Open Feature
- Heavy-Gauge Stainless Steel Drawer with Slide
- Interior Mounted Thermometer
- 8' Cord & Plug Attached
- Set of (6) 4" Casters

ACCESSORIES & OPTIONS (*field installed)

- CK21 (six 6" (15.2 cm) high casters for 72" models)
- CK25 (six 3½" (8.9 cm) high casters for 72" models)
- CK27 (six 2½" (6.4 cm) high casters for 72" models)
- LK6 (six 6" (15.24 cm) high legs for 72" models)
- Optional accessory kits shipped separately for field installation

FACTORY INSTALLED OPTIONS

- Stainless Steel Finished Back (model numbers will have '-SB' suffix)

Approved by _____ Date _____ Approved by _____ Date _____



COMPACT SANDWICH PREP TABLES

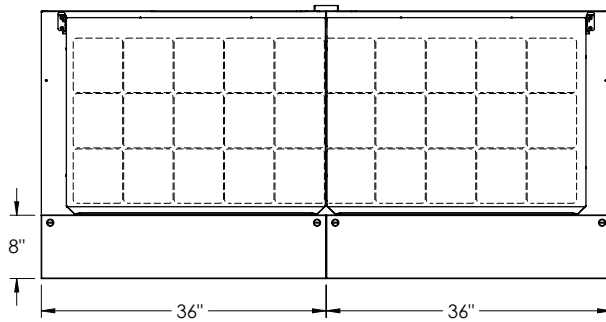
with Flat Cover/Self-Contained
UST 72" Wide Models

MODEL:
UST7230-DD

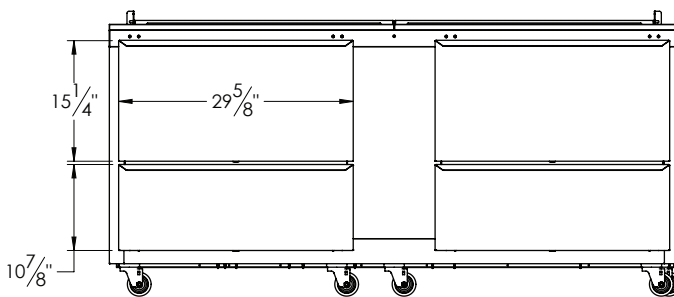
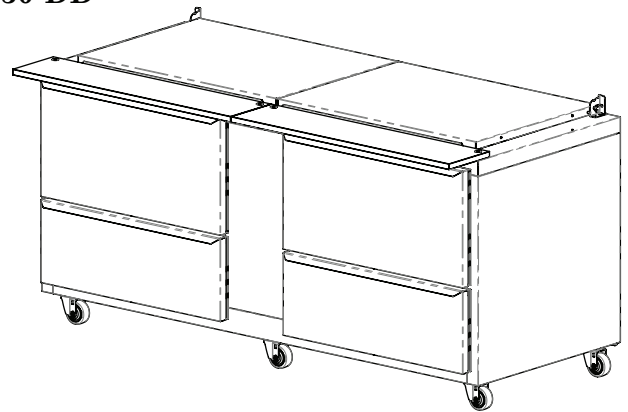
CAD and/or Revit Files Available

<https://traulsen.kclcad.com/>

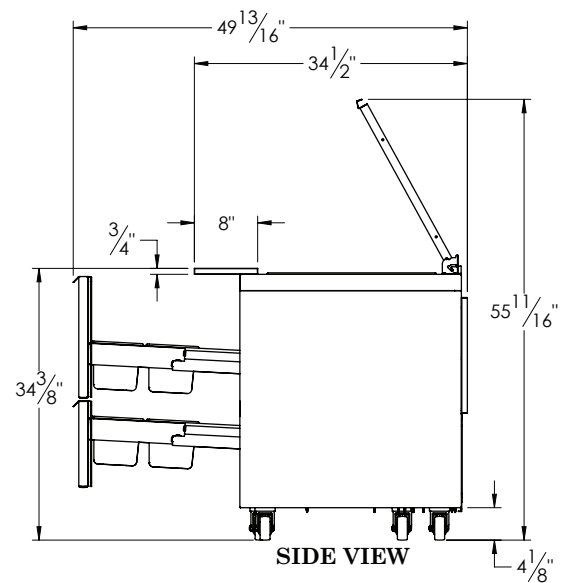
UST7230-DD



TOP VIEW



ELEVATION



SIDE VIEW



COMPACT SANDWICH PREP TABLES

with Flat Cover/Self-Contained
UST 72" Wide Models

MODEL:

UST7230-DD

MODEL	UST7230
DIMENSIONAL DATA	
Drawers per cabinet	4
# of 1/6 Size Pan Top	30
# of 1/6 Size pans per drawer	8
# of 1/6 Size pans per unit	62
Length - overall in.	72 (182.9 cm)
Depth - overall in. ¹	34½ (87.6 cm)
Depth - cutting board in.	8 (20.3 cm)
Width - drawer in.	29⅝ (75.3 cm)
Height - overall on 4" casters	36 (91.4 cm)
Work Height on 4" casters	34⅝ (87.3 cm)
ELECTRICAL DATA (NEMA 5-15P attached)	
Voltage	115/60/1
Full Load Amperes	7.2
REFRIGERATION DATA	
Refrigerant	R-290
Refrigerant Charge oz.	5 (141.8 g)
BTU/HR ² HP	1525 ¼ HP
SHIPPING DATA	
Length - crated in.	84 (213.4 cm)
Width - crated in.	42 (106.7 cm)
Height - crated in.	41 (104.1 cm)
Volume - crated cu. ft.	91 (2576.8 l)
Weight - crated lbs.	408 (185.1 kg)

NOTES:

1. Overall depth figure includes standard cutting board
2. Height shown when mounted on 4" casters
3. Compressor BTU based on a 90°F ambient and 20°F evaporator

EQUIPMENT SPECIFICATIONS

CONSTRUCTION, HARDWARE, INSULATION

Cabinet exterior front, one piece sides, pan lid, and drawers are constructed of heavy gauge stainless steel. Cabinet interior is constructed of anodized aluminum. The exterior cabinet back and bottom are constructed of galvanized steel.

The cabinet is insulated with an average of 2" thick high density, non-CFC, foamed in place polyurethane.

A ¾" thick, full-length, reversible white nylon cutting board is supplied standard.

PANS & COVER

Each model is supplied standard with its full compliment of 4" deep plastic 1/6 size pans and stainless steel pan dividers. The insulated lift-up pan cover is constructed of stainless steel, and is easily removable for cleaning.

REFRIGERATION SYSTEM

A balanced, rear mounted, front breathing, self-contained refrigeration system using environmentally-friendly, low GWP R290 refrigerant is provided. It features a capillary tube metering device, air-cooled hermetic compressor, a forced air evaporator coil and a non-electric condensate evaporator. An 8' cord and plug is provided. Standard operating temperature of the refrigerated base is 34 to 38°F (1.1° to 3.3°C).

CONTROLLER

An electronic digital control is supplied standard. It includes a 3-Digit LED display, and a Fahrenheit or Celsius temperature scale display capability.

DRAWERS

They are constructed using heavy gauge stainless steel drawer slides and 1-5/16" diameter stainless steel rollers. Gasket profile and material simplify cleaning and increase overall gasket life. Drawers include both a self-closing and stay-open feature.

WARRANTY

Both a six year parts and labor warranty and a seven year compressor parts warranty (self-contained models only) are provided standard.

When ordering please specify: Voltage, Hinging, and Options.

Equipped with one NEMA 5-15P Plug

