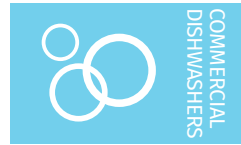




Project _____
AIA # _____ SIS # _____
Item # _____ Quantity _____ C.S.I. Section 114000



FT1000 ENERGY RECOVERY STEAM Flight-Type Dishwashing Machine



LA Research Report M660004

Complies with EPA Reduction of Lead in Drinking Water Act 2014

Meets requirements of ASSE Standard No. 1004

SPECIFIER STATEMENT

The specified machine shall be a Hobart Energy Recovery flight type dish machine, 58 gallons of final rinse consumption per hour, with dual rinse, hinged & insulated doors, 30" wide conveyor belt, sliding wash arms without caps, & microprocessor controls with ventless technology, auto clean, auto delime, energy recovery, and automatic soil removal system (ASR).

STANDARD FEATURES

- + Pumped rinse system (pressure gauge not required)
- + Water usage 58 gph
- + Digital controls with machine diagnostics
- + Low temperature alert
- + Hinged insulated cabinet-style doors
- + 31" access on prewash, power wash and power rinse chambers; 20" access on dual rinse and ASR chambers
- + Start and stop switches at both ends
- + Doors open indicator
- + Drains open indicator
- + Door interlocks
- + 3½ H.P. prewash, 4 H.P. power wash and power rinse pump motors, all TEFC
- + Capless auto clean wash arms
- + Easy to remove stainless steel scrap pans and baskets
- + 30" wide conveyor belt
- + Dual rinse
- + Automatic soil removal system (ASR)
- + Auto clean
- + Auto delime
- + Energy recovery
- + Front and rear panels
- + Variable speed conveyor
- + Steam booster heater
- + Configurable drain to load or unload

OPTIONS & ACCESSORIES (Available at extra cost)

- ☐ Insulated split, vertical slide-up doors
- ☐ Multiple conveyor options
- ☐ Factory mounted circuit breakers
- ☐ Correctional packages – standard, medium and maximum options (Contact Hobart for details)
- ☐ Casino packages
- ☐ 6" higher than standard chamber
- ☐ Flanged feet
- ☐ Water hammer arrestor/PRV (field installed)
- ☐ Drain water tempering kit (installed by others)
- ☐ Water treatment system
- ☐ Electric booster heater

FT SERIES – FT1000 ENERGY RECOVERY STEAM

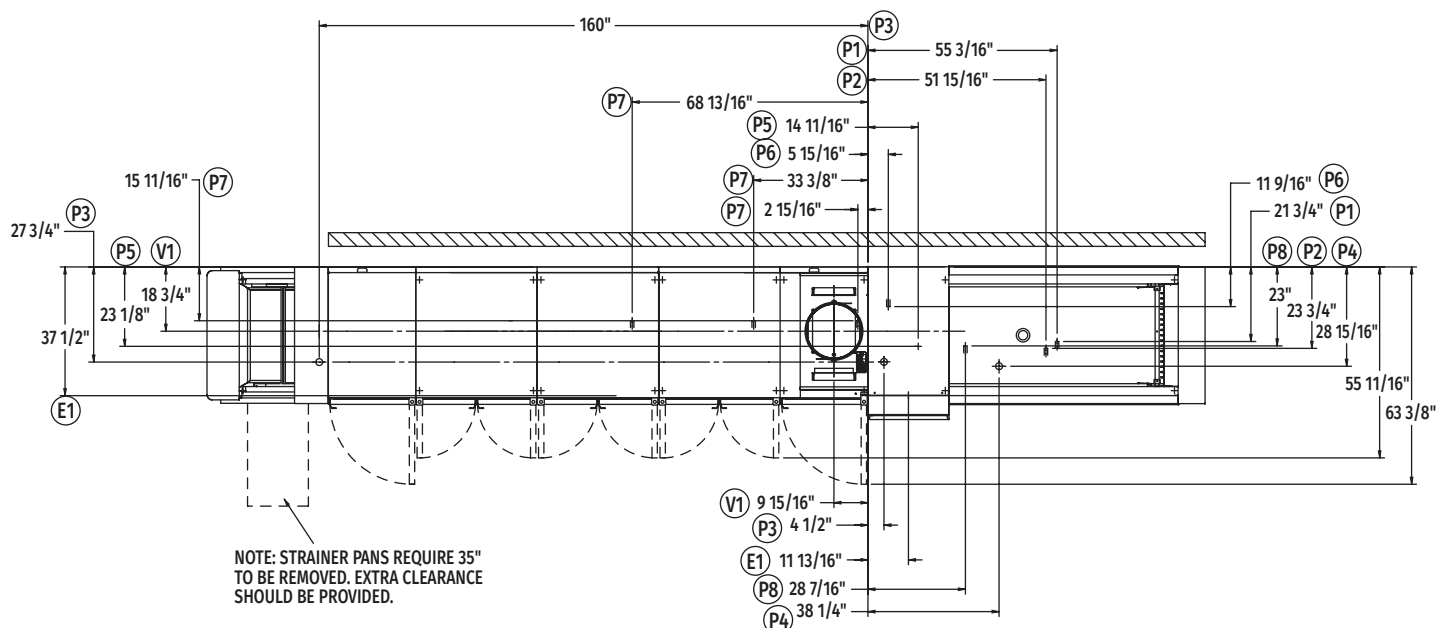
Approved by _____ Date _____ Approved by _____ Date _____



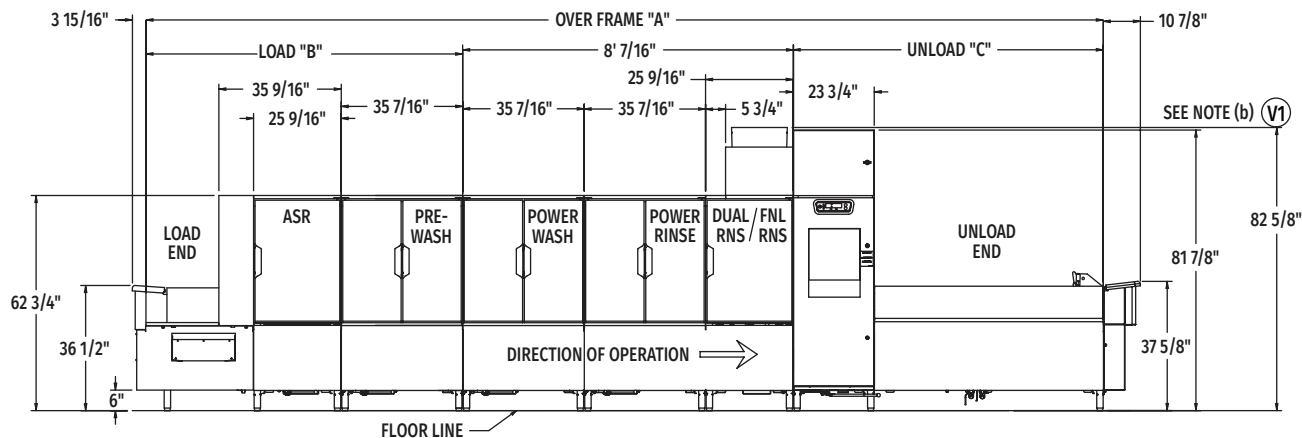
FT1000 ENERGY RECOVERY STEAM

Flight-Type Dishwashing Machine

(Left to Right)



Top View Left to Right

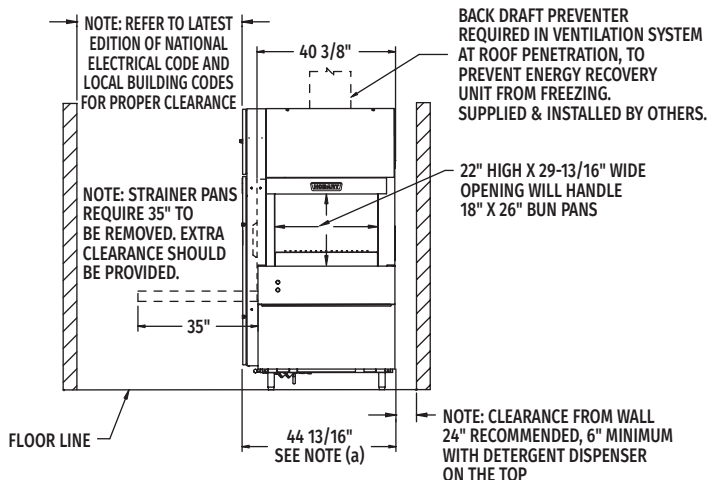


Front View Left to Right

Note: Control box electrical connections – see page 5.

| MODEL NO. | "A" | "B" | "C" |
|-----------------------|---------------|------------|-------------|
| FT1021 (7.5'-8'-5.5') | 21' 4" | 7' 8-1/2" | 5' 7" |
| FT1022 (8.5'-8'-5.5') | 22' 3-3/4" | 8' 8-1/4" | 5' 7" |
| FT1023 (9.5'-8'-5.5') | 23' 3-19/32" | 9' 8-3/32" | 5' 7" |
| FT1023 (7.5'-8'-7.5') | 23' 3-1/2" | 7' 8-1/2" | 7' 6-1/2" |
| FT1024 (8.5'-8'-7.5') | 24' 3-1/4" | 8' 8-1/4" | 7' 6-1/2" |
| FT1025 (9.5'-8'-7.5') | 25' 3-3/32" | 9' 8-3/32" | 7' 6-1/2" |
| FT1025 (7.5'-8'-9') | 24' 11-1/4" | 7' 8-1/2" | 9' 2-1/4" |
| FT1026 (8.5'-8'-9') | 25' 11" | 8' 8-1/4" | 9' 2-1/4" |
| FT1027 (9.5'-8'-9') | 26' 10-27/32" | 9' 8-3/32" | 9' 2-1/4" |
| FT1027 (7.5'-8'-11') | 26' 10-7/8" | 7' 8-1/2" | 11' 1-7/8" |
| FT1028 (8.5'-8'-11') | 27' 10-5/8" | 8' 8-1/4" | 11' 1-7/8" |
| FT1029 (9.5'-8'-11') | 28' 10-15/32" | 9' 8-3/32" | 11' 1-7/8" |
| FT1030 (7.5'-8'-15') | 30' 6-3/16" | 7' 8-1/2" | 14' 9-3/16" |
| FT1031 (8.5'-8'-15') | 31' 5-15/16" | 8' 8-1/4" | 14' 9-3/16" |
| FT1032 (9.5'-8'-15') | 32' 5-25/32" | 9' 8-3/32" | 14' 9-3/16" |
| FT1032 (7.5'-8'-17') | 32' 5-3/4" | 7' 8-1/2" | 16' 8-3/4" |
| FT1033 (8.5'-8'-17') | 33' 5-1/2" | 8' 8-1/4" | 16' 8-3/4" |
| FT1034 (9.5'-8'-17') | 34' 5-11/32" | 9' 8-3/32" | 16' 8-3/4" |

Note: Overall length of machine is Dimension "A" + 14-13/16"



Back/Unload End

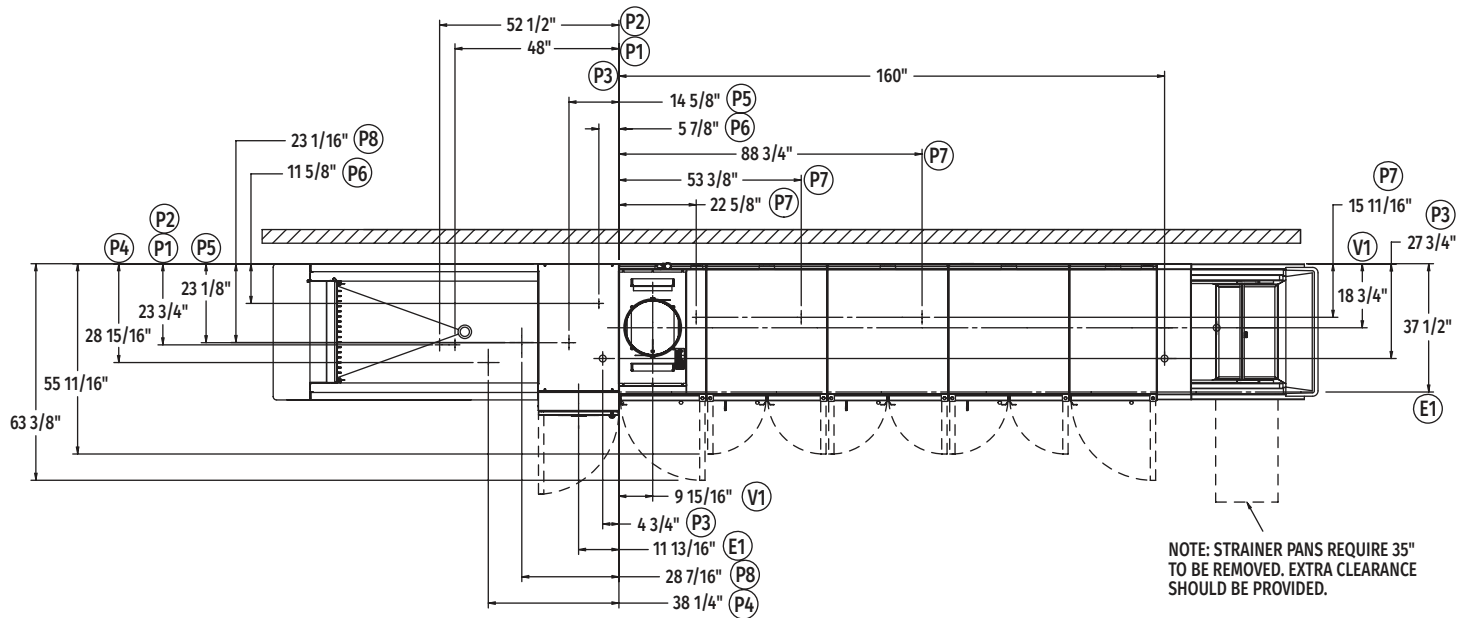
MODEL:
FT1000 ENERGY RECOVERY
STEAM
L-R OPERATION
00-949505
REV C



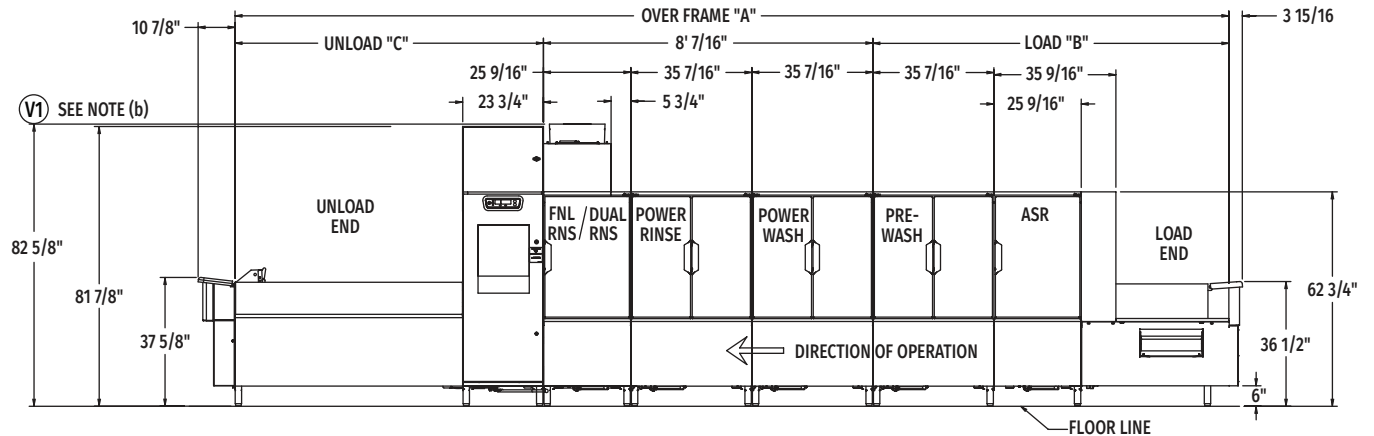
FT1000 ENERGY RECOVERY STEAM

Flight-Type Dishwashing Machine

(Right to Left)



Top View Right to Left

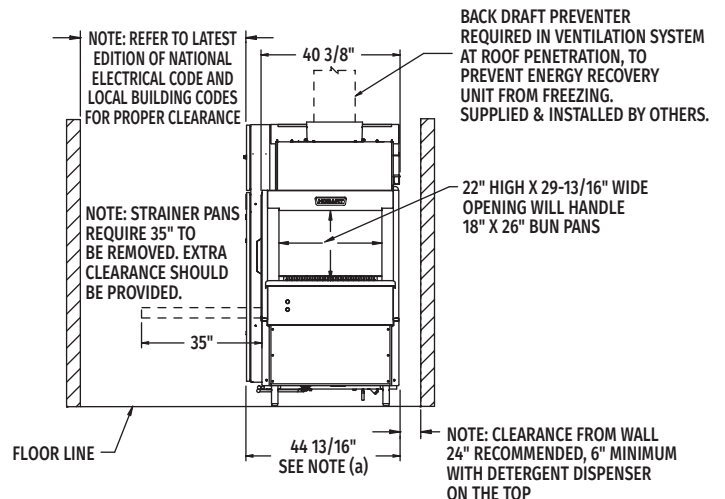


Front View Right to Left

Note: Control box electrical connections – see page 5.

| MODEL NO. | "A" | "B" | "C" |
|-----------------------|---------------|------------|-------------|
| FT1021 (7.5'-8'-5.5') | 21' 4" | 7' 8-1/2" | 5' 7" |
| FT1022 (8.5'-8'-5.5') | 22' 3-3/4" | 8' 8-1/4" | 5' 7" |
| FT1023 (9.5'-8'-5.5') | 23' 3-19/32" | 9' 8-3/32" | 5' 7" |
| FT1023 (7.5'-8'-7.5') | 23' 3-1/2" | 7' 8-1/2" | 7' 6-1/2" |
| FT1024 (8.5'-8'-7.5') | 24' 3-1/4" | 8' 8-1/4" | 7' 6-1/2" |
| FT1025 (9.5'-8'-7.5') | 25' 3-3/32" | 9' 8-3/32" | 7' 6-1/2" |
| FT1025 (7.5'-8'-9') | 24' 11-1/4" | 7' 8-1/2" | 9' 2-1/4" |
| FT1026 (8.5'-8'-9') | 25' 11" | 8' 8-1/4" | 9' 2-1/4" |
| FT1027 (9.5'-8'-9') | 26' 10-27/32" | 9' 8-3/32" | 9' 2-1/4" |
| FT1027 (7.5'-8'-11') | 26' 10-7/8" | 7' 8-1/2" | 11' 1-7/8" |
| FT1028 (8.5'-8'-11') | 27' 10-5/8" | 8' 8-1/4" | 11' 1-7/8" |
| FT1029 (9.5'-8'-11') | 28' 10-15/32" | 9' 8-3/32" | 11' 1-7/8" |
| FT1030 (7.5'-8'-15') | 30' 6-3/16" | 7' 8-1/2" | 14' 9-3/16" |
| FT1031 (8.5'-8'-15') | 31' 5-15/16" | 8' 8-1/4" | 14' 9-3/16" |
| FT1032 (9.5'-8'-15') | 32' 5-25/32" | 9' 8-3/32" | 14' 9-3/16" |
| FT1032 (7.5'-8'-17') | 32' 5-3/4" | 7' 8-1/2" | 16' 8-3/4" |
| FT1033 (8.5'-8'-17') | 33' 5-1/2" | 8' 8-1/4" | 16' 8-3/4" |
| FT1034 (9.5'-8'-17') | 34' 5-11/32" | 9' 8-3/32" | 16' 8-3/4" |

Note: Overall length of machine is Dimension "A" + 14-13/16"



Back/Unload End



FT1000 ENERGY RECOVERY STEAM

Flight-Type Dishwashing Machine

LEGEND

| Electrical Connections | |
|-------------------------|---|
| E1 | Electric connection for 1TB with or without circuit breakers. 79-1/8" AFF. |
| Plumbing Connections | |
| P1 | Common hot water connection (automatic fill) 110°F water minimum, 1" FPT, 5-1/2" AFF. See notes (b) and (d). |
| P2 | Common cold water connection, 55°F minimum, 1" FPT, 5-1/2" AFF. See notes (c) and (d). |
| P3 | Drain connection: May be drained to either end of unit. Default location is drain to unload unless otherwise indicated. 2" FPT, 7" AFF. |
| P4 | Common steam connection (tank heat & steam booster). 1-1/2" FPT, 7" AFF (10-45 PSI flowing pressure) see note (e). |
| P5 | Steam relief valve (when steam booster option is specified) 1" FPT, must be piped to open drain receiver in the floor. 16-15/16" AFF. |
| P6 | Hot water relief valve (when steam booster option is specified) 3/4" FPT, must be piped to open drain receiver in the floor. 15-9/16" AFF. |
| P7 | Condensate return, gravity connection (tank heat), bucket type traps furnished, 3 connections. 3/4" FPT, 11" AFF. |
| P8 | Condensate return, gravity connection (when steam booster option is specified), bucket type trap furnished. 3/4" FPT, 4-3/4" AFF |
| Ventilation Connections | |
| V1 | Customers' vent connection. Must fit inside 16" diameter vent stack providing 750 CFM exhaust at machine connection @ .75" Ps (standard air conditions). Back draft preventer recommended at roof penetration. Supplied and installed by others. 77-5/8" AFF. |

WARNING: Plumbing and electrical connections should be made by qualified personnel who will observe all the applicable plumbing, sanitary, safety codes and National Electrical Code.

General Notes:

- (a) The control box is attached to the center section and is rotated 90 degrees for shipping.

AFF = Above Finished Floor

All dimensions taken from the floor line may increase 3-1/4" with leg adjustment.

For convenience when cleaning, customer should install water tap near machine with 30 ft. of heavy duty hose with squeeze valve.

This drawing is supplied as a reference for connection information only. It will not be utilized for manufacturing of unit.

Electrical Warning:

Service wire temperature rating: 90°C minimum.

Plumbing Notes:

Recommended building flowing hot water pressure to the dishwasher is 40-45 PSI.

Recommended building flowing cold water to the dishwasher is 30-35 PSI. If cold water is less than 55°F, contact sales engineering.

Water hammer arrestor (meeting ASSE-1010 standard or equivalent) to be supplied (by others) in hot and cold supply lines at service connection.

If steam pressure is under 10 PSI flowing pressure at the dishwasher, contact sales engineering.

Ventilation Notes:

- (b) The vent stack and its enclosure can be temporarily removed from the energy recovery unit to yield 81-7/8" clearance for doorways.

Room ventilation is required to handle machine's latent & sensible heat. Majority of latent/sensible heat at unload end of machine.

Water Quality Required:

For best results – Total water hardness < 3 grains per gallon.

For best results – Total suspended solids (TSS) < 10 microns.

| Heat Gain to Space (BTU/Hr.) | |
|------------------------------|----------|
| Latent | Sensible |
| 77,326 | 33,140 |



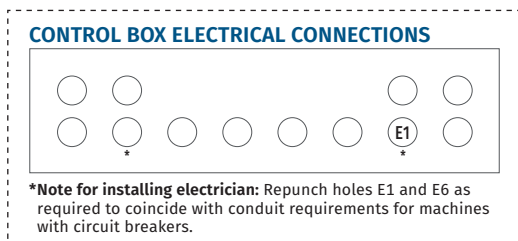
FT1000 ENERGY RECOVERY STEAM

Flight-Type Dishwashing Machine

SERVICE CONNECTIONS WITH AND WITHOUT CIRCUIT BREAKERS (1 CONNECTION)

| E1 | Motors & Controls (1TB) (1) Service Connection as Shown Below | | | |
|----|--|------------|---------------------------------|---------------------------|
| | Voltage | Rated Amps | Minimum Supply Circuit Ampacity | Maximum Protective Device |
| | 208-240/60/3 | 41.4 | 60 | 60 |
| | 480/60/3 | 25.4 | 35 | 35 |

| FT1000 Optional Water Treatment System | |
|--|---------------------------|
| Model | Description |
| WS-80 | Water Softener |
| PF-10-EHT | Hi-Temp Filter Housing |
| SD-510HT | Sediment Filter Cartridge |



Detail "A-A"
(not to scale)

SPECIFICATIONS

Capacities

| | |
|----------------------------------|-----------|
| Conveyor Speed (feet per minute) | 4.0 - 8.5 |
| Dishes per Hour | 14,316 |
| ASR Tank (U.S. gallons) | 7.2 |
| Pre-Wash Tank (U.S. gallons) | 40 |
| Wash Tank (U.S. gallons) | 40 |
| Rinse Tank (U.S. gallons) | 40 |
| Dual Rinse Tank (U.S. gallons) | 7.2 |

Motor Horsepower

| | |
|-------------------|-----|
| Auto Soil Removal | ¾ |
| ASR Wash | ¾ |
| Pre-Wash Tank | 3.9 |
| Wash Tank | 3.9 |
| Rinse Tank | 3.9 |
| Dual Rinse Tank | ¾ |
| Final Rinse | ¾ |
| Conveyor | ¾ |

Water Consumption

| | |
|-------------------------------------|------|
| U.S. Gallons per Hour (maximum use) | 58 |
| U.S. Gallons per Minute | 0.97 |

Steam Consumption

| | |
|---|-----|
| Pounds per Hour (maximum) | 209 |
| Regulated – based on 10 to 45 PSI steam at the machine. (150°F wash minimum – 160°F rinse minimum – 160°F dual rinse minimum) | |

Steam Booster (external – order separately)

| | |
|--|----|
| Pounds per Hour (maximum) | 42 |
| If used on 20 PSI steam, 20 PSI water flowing, 110°F incoming water raised to 185°F (75°F rise) (180°F final rinse minimum) | |

Shipping Weight (approximate) . . . Varies by individual model
(Consult your Hobart representative)

Crated Dimensions Varies by individual model
(Consult your Hobart representative)