



PARTS MANUAL

LOAD KING

POLE TRAILER

TABLE OF CONTENTS

INTRODUCTION	3
DEFINITIONS USED IN THIS MANUAL	4
CAPACITY INFORMATION	5
TPT00300, LK112PT POLE TRAILER ASSEMBLY	6
LK112PT AXLE.....	8
TPT00250, LK111PT POLE TRAILER ASSEMBLY	10
LK111PT AXLE.....	12
TPT00140, LK122PT POLE TRAILER ASSEMBLY	14
LK122PT AXLE.....	16
TPT00002, SLIDE ASSEMBLY	18
TPT00135, WELDMENT, STANCHION.....	19
TPT00500, WELDMENT, STANCHION HANDEL, UNIVERSAL CAM LOCK.....	20
TPT00020, TOOL BOX ASSEMBLY	22
PARTS CATALOG.....	23
HARDWARE.....	32
LIGHTS	37
ELECTRICAL SCHEMATIC	38
LOAD KING POLE TRAILER LABELS	39
LOAD KING WARRANTY.....	41
LIMITATION OF LIABILITY.....	41
LOAD KING WARRANTY DATA RECORD.....	42
REVISION CONTENT.....	34

Company

Load King has been producing quality trailers since 1956. We are located in Elk Point, South Dakota.

Although the trailer industry is an ever-changing environment and we've seen many changes over the years, we have remained committed to the simple philosophy that we will make a reasonable profit through the designing, manufacturing, and marketing of top quality products that we can always be proud to call Load King. We have not, and will not, compromise in this area.

Quality shows in all facets of an operation, from the moment you make your first phone call for a product inquiry to the time you sell your used equipment and realize you've received top dollar on your sale. We continue to strive for excellence in every area and never quit trying to improve. We have earned our reputation believing that quality is value and value sells products.

Through our shared Engineering, Marketing and Sales teams, Load King and Custom Truck One Source bring that tradition of quality and value to another market with the Load King Pole Trailer.

About Custom Truck One Source

Beginning in February of 2015, three family-owned and operated companies (Custom Truck & Equipment, Utility Fleet Sales and Forestry Equipment of VA) joined together to form what is now Custom Truck One Source. Shortly after its inception, UCO Equipment became a part of the CTOS family along with TNT Equipment six months later. In December 2015, CTOS welcomed its sixth company under its brand, Load King, a leading manufacturer of high-quality and customizable trailers.


The announcement of the partnership represented the platform's collective commitment to the continued growth and dominance of each legacy company's individual offerings, now compounded to leverage the expertise of the team and, ultimately, better serve loyal CTOS customers all over the world. CTOS will build upon the market positions of each legacy company, while serving as a single source supplier of specialty equipment and services for the utility and heavy equipment industries. The utility and heavy equipment platform collectively offers sales, rentals, parts and after market services, remanufacturing, customized equipment and transportation.

Online Access

Load King provides the latest parts and operators manuals for our products online. Download the latest updates at <https://loadkingtrailers.com/>


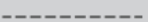
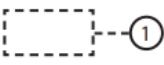

Definitions Used in this Manual

The following table describes text and symbols used to highlight important information.

Signal Word	Symbol	Explanation
WARNING		WARNING IS USED TO ALERT READERS ABOUT THE POTENTIAL FOR SERIOUS INJURY OR DEATH OR SERIOUS DAMAGE TO EQUIPMENT.

Table—1

The following table describes line types in the parts drawings.

LINE FONTS		DESCRIPTION
	SOLID LINE FONT	INDICATES PART OUTLINES IN THE DRAWINGS.
	DASHED LINE FONT	INDICATES HOW TWO OR MORE PARTS ASSEMBLE.
	KEYED BOX/BRACKET	INDICATES PARTS INSIDE OF A SUB ASSEMBLY.
	DASHED KEY	INDICATES PART NOT VISIBLE OR HIDDEN IN VIEW

Table—2

SAFETY WARNINGS



WARNING: All repairs, adjustments and maintenance not described in the Operator's Manual must be performed by Qualified Service Personnel.



WARNING: Hydraulic system components can contain high pressures of which, if suddenly or unexpectedly released, can cause serious injury or death by direct contact with the pressurized oil or by contact with moving machine components.

CAPACITY INFORMATION



The Following information is specific to each of the different models of the Load King pole trailer. Be aware of your specific model when referencing the information below.

LK112PT – Load King tandem axle, dual wheel, open deck pole trailer

Tandem 12K axles with leaf spring suspension

235/75R17.5H radial tires on 17.5" X 6.75" steel wheels (dual)

19,500 pound (8864 KG) rated frame capacity at 60 MPH

24,000 pound (10909 KG) GVWR — GVWR determined by traditional Load King methodology – it can be estimated slightly higher if you assume 10% weight transfer to tow vehicle

12,000 pound (5455 KG) GAWR

LK111PT – Load King single axle, dual wheel, open deck pole trailer

Single 16K axle w/ leaf spring suspension

235/75R17.5H radial tires on 17.5" X 6.75" steel wheels (single)

12,500 pound (5682 KG) rated frame capacity at 60 MPH

16,000 pound (7273 KG) GVWR – GVWR determined by traditional Load King methodology – it can be estimated slightly higher if you assume 10% weight transfer to tow vehicle

16,000 pound (7273 KG) GAWR

LK122PT – Load King tandem axle, single wheel, box style pole trailer

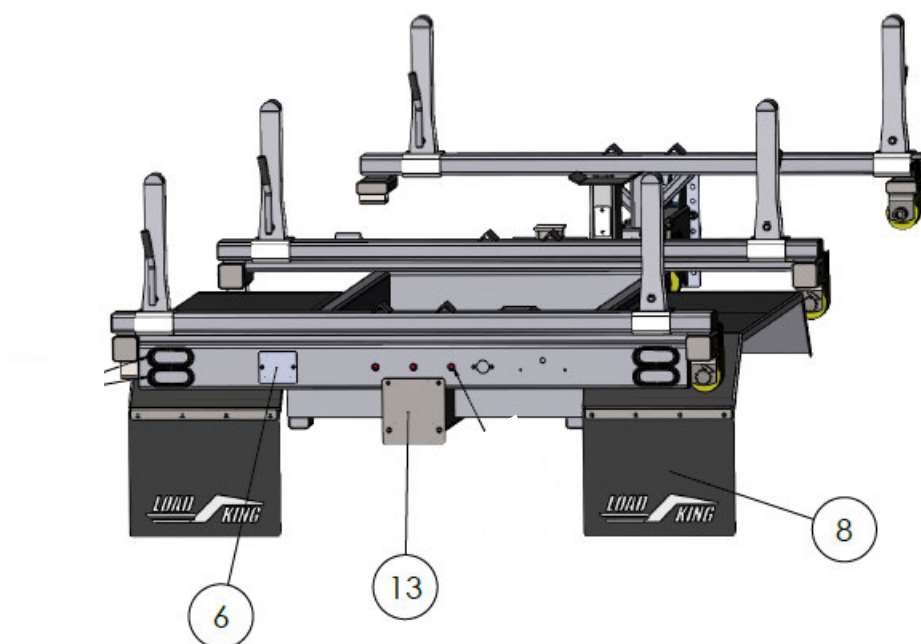
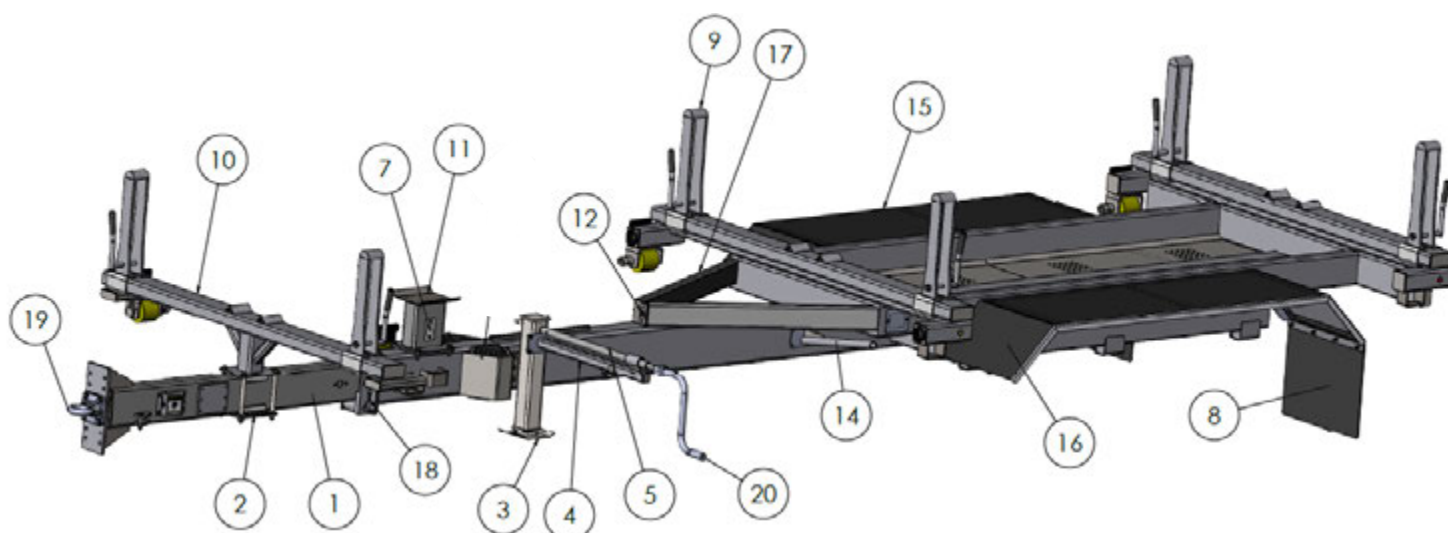
Tandem 10K torsion beam axles

235/75R17.5H radial tires on 17.5" X 6.75" steel wheels (single)

14,500 pound (6591 KG) rated frame capacity at 60 MPH

20,000 pound (9091 KG) GVWR – GVWR determined by traditional Load King methodology – it can be estimated slightly higher if you assume 10% weight transfer to tow vehicle

10,000 pound (4545 KG) GAWR

TPT00300, LK112PT POLE TRAILER ASSEMBLY

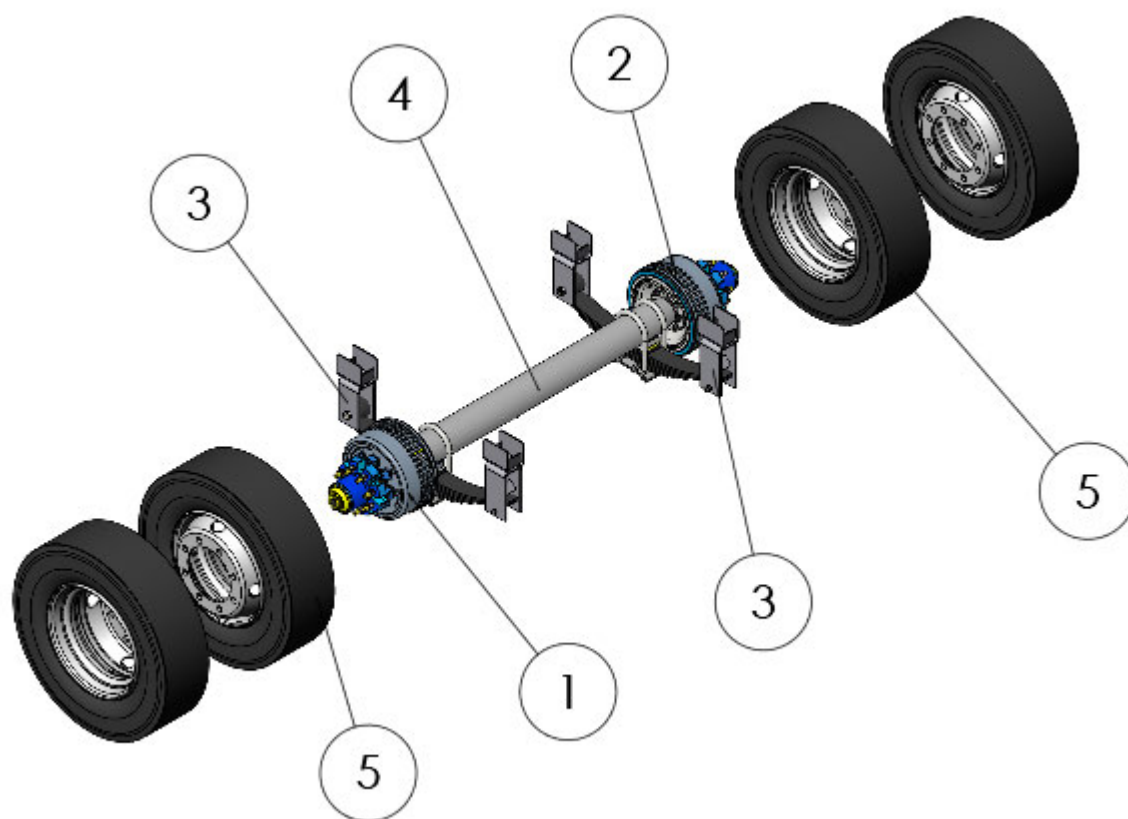
TPT00300, LK112PT POLE TRAILER ASSEMBLY (Cont.)

ITEM NO.	PART NUMBER	DESCRIPTION	QTY.	PAGE NO.
1	TPT00002*	SLIDE ASSEMBLY	1	12
2	TPT00045	WELDMENT, BOLSTER BOT PLT	1	15
3	TPT00055	WELDMENT, JACK	1	15
4	TPT00060	WELDMENT, JACK EXTENSION	1	16
5	TPT00065	WELDMENT, CRANK EXT.	1	16
6	TPT00101	REAR ELECTRICAL COVER	1	16
7	TPT00106	ELECTRIC COVER	2	16
8	TPT00113	MUD FLAP	2	17
9	TPT00135** OR TPT00500**	WELDMENT, STANCHION	6	13
10	TPT00220	WELDMENT, FRONT BOLSTER	1	17
11	TPT00230	WELDMENT, CTR BOLSTER	1	17
12	TPT00237	ELECTRIC COVER	1	17
13	TPT00238	REAR CLOSE PLATE	1	18
14	TPT00304	WELDMENT - WINCH BAR HOLDER	1	18
15	TPT00305	WELDMENT, FENDER RH	1	18
16	TPT00306	WELDMENT, FENDER LH	1	18
17	TPT00310	WELDMENT, FRAME	1	22
18	TPT00314	1" DIA. STAINLESS HITCH PIN W/ TETHERED LINCH PIN	1	18
19	TPT00315	BOLT-ON PINTLE EYE	1	18
20	TPT00323	JACK CRANK	1	19

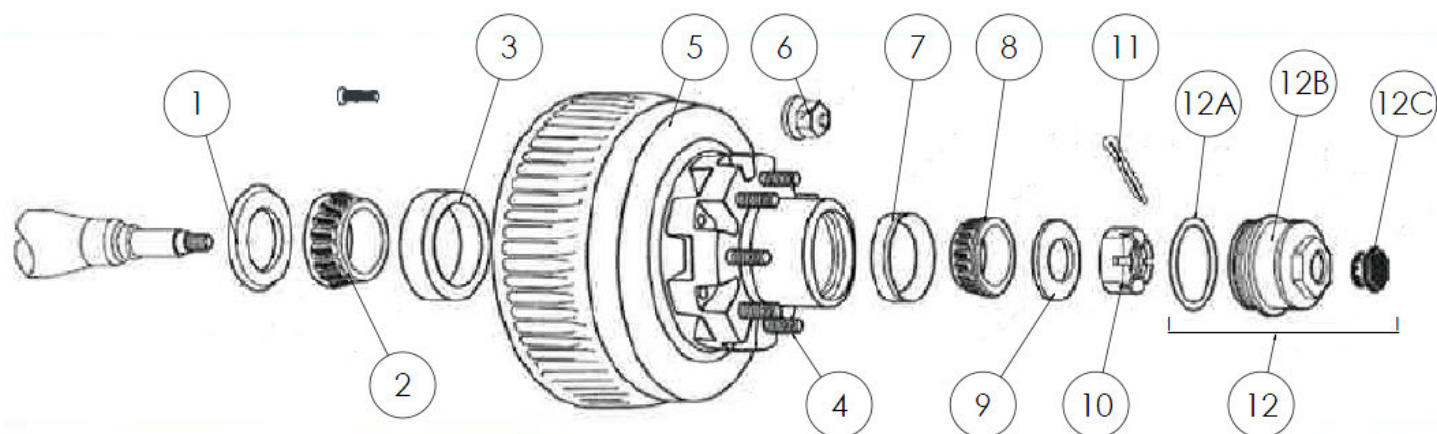
*TPT00002 parts breakdown located on page 18

**TPT00135, previous generation, parts breakdown located on page 19

**TPT00500, improved stanchion, parts breakdown located on page 20

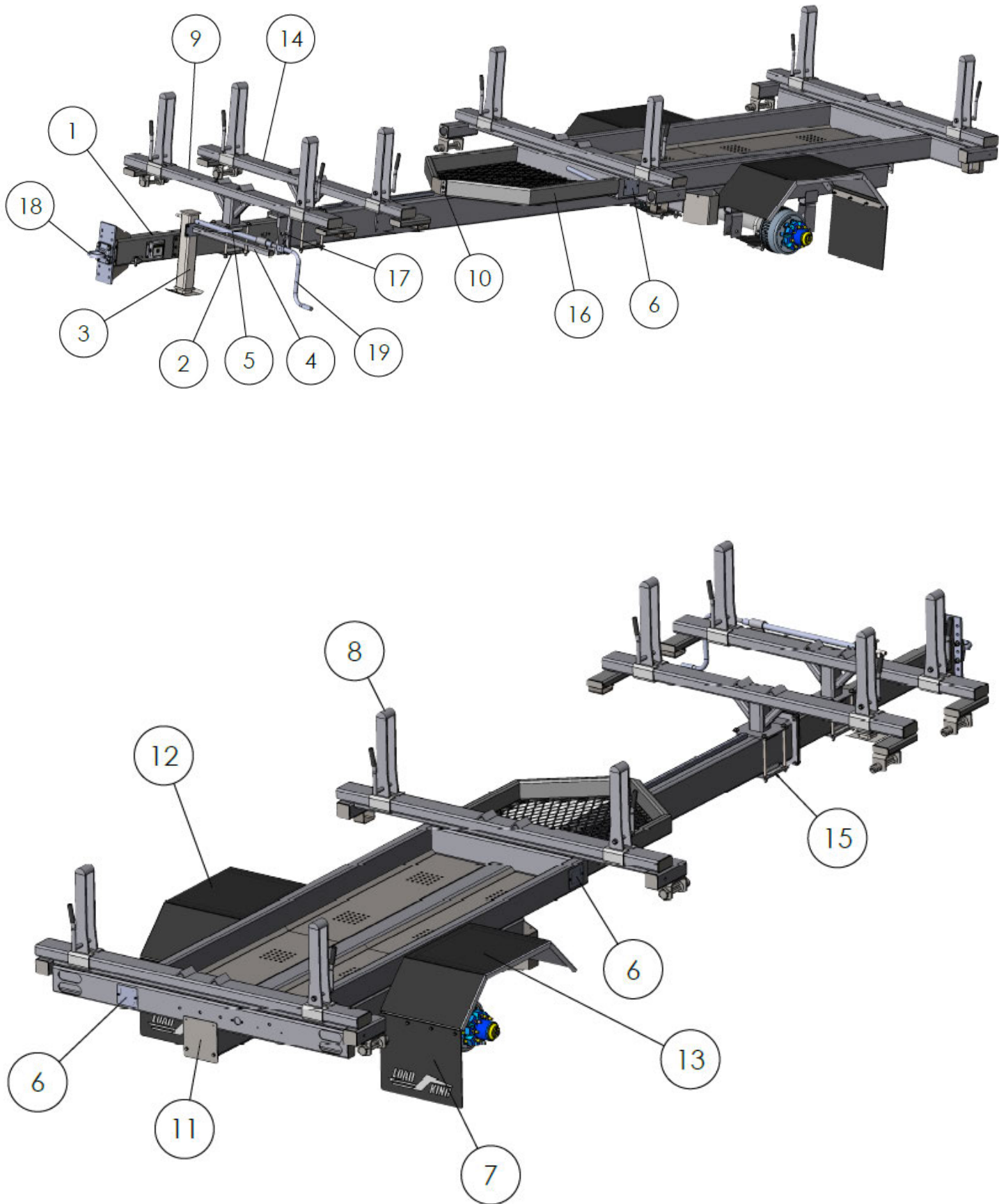
LK112PT AXLE

ITEM NO.	PART NUMBER	DESCRIPTION	QTY.
1	MP5-5758	ELECTRIC BRAKE ASSY - 12-1/4" X 5" - 12K TO 16K - ROAD-SIDE	2
2	MP5-5759	ELECTRIC BRAKE ASSY - 12-1/4" X 5" - 12K TO 16K - CURBSIDE	2
3	TPT00302	HANGER KIT - SINGLE - 10K TO 16K FOR 2.5" SLIPPER SPRING	1
4	TPT00201	12K AXLE - 74" HUB TO HUB - 44" SPRING C-C - 8 STUD ON 6.5" BC - ELECTRIC BRAKE - 2.5" LONG SPRING	2
5	TRD0082003SM	235/75R17.5H DT-23 ON 8 STUD X 6.5" BC STEEL WHEEL	8
6	DCL00739	DECAL - TIRE AND LOADING INFORMATION - LK112PT	1

LK112PT AXLE (Cont.)

ITEM NO.	PART NUMBER	DESCRIPTION	QTY.
1	TPT00301-1	Oil Seal	2
2	TPT00301-2	Inner Bearing	2
3	TPT00301-3	Inner Race	2
4	TPT00301-4	Stud - 5/8"-18	32
5	MP5-5760	16K ELECTRIC HUB AND DRUM - 10 STUD ON 8.75" BOLT CIRCLE	4
6	TPT00301-6	Swivel Flange Nut	32
7	TPT00301-7	Outer Race	2
8	TPT00301-8	Outer Bearing	2
9	TPT00301-9	Spindle Washer	2
10	TPT00301-10	Spindle Nut	2
11	TPT00301-11	Cotter Pin	2
12	TPT00301-12	Oil Cap, Complete Assembly	2
12A	TPT00301-12A	Oil Ring	2
12B	TPT00301-12B	Oil Cap	2
12C	TPT00301-12C	Oil Cap Plug	2

TPT00250, LK111PT POLE TRAILER ASSEMBLY



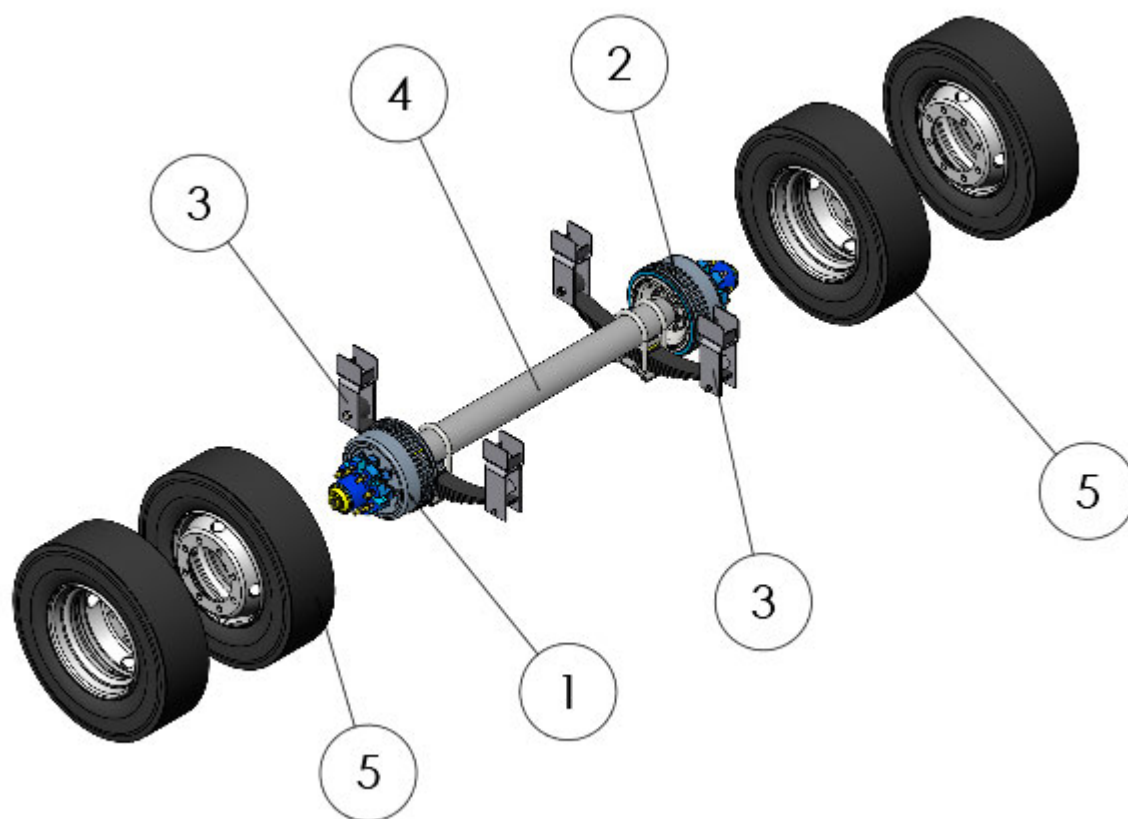
TPT00250, LK111PT POLE TRAILER ASSEMBLY (Cont.)

ITEM NO.	PART	DESCRIPTION	QTY.	PAGE NO.
1	TPT00002*	SLIDE ASSEMBLY	1	12
2	TPT00045	WELDMENT, BOLSTER BOT PLT	1	15
3	TPT00055	WELDMENT, JACK	1	15
4	TPT00060	WELDMENT, JACK EXTENSION	1	16
5	TPT00065	WELDMENT, CRANK EXT.	1	16
6	TPT00101	REAR ELECTRICAL COVER	3	16
7	TPT00113	MUD FLAP	2	17
8	TPT00135** OR TPT00500**	WELDMENT, STANCHION	8	13
9	TPT00220	WELDMENT, FRONT BOLSTER	1	17
10	TPT00237	ELECTRIC COVER	1	17
11	TPT00238	REAR CLOSE PLATE	1	18
12	TPT00240	WELDMENT, FENDER LH	1	19
13	TPT00245	WELDMENT, FENDER RH	1	19
14	TPT00255	WELDMENT, FRONT BOLSTER	1	20
15	TPT00258	WELDMENT, BOLSTER BOT PLT	1	20
16	TPT00260	WELDMENT, FRAME	1	22
17	TPT00314	1" DIA. STAINLESS HITCH PIN W/ TETHERED LINCH PIN	1	18
18	TPT00315	BOLT-ON PINTLE EYE	1	18
19	TPT00323	JACK CRANK	1	19

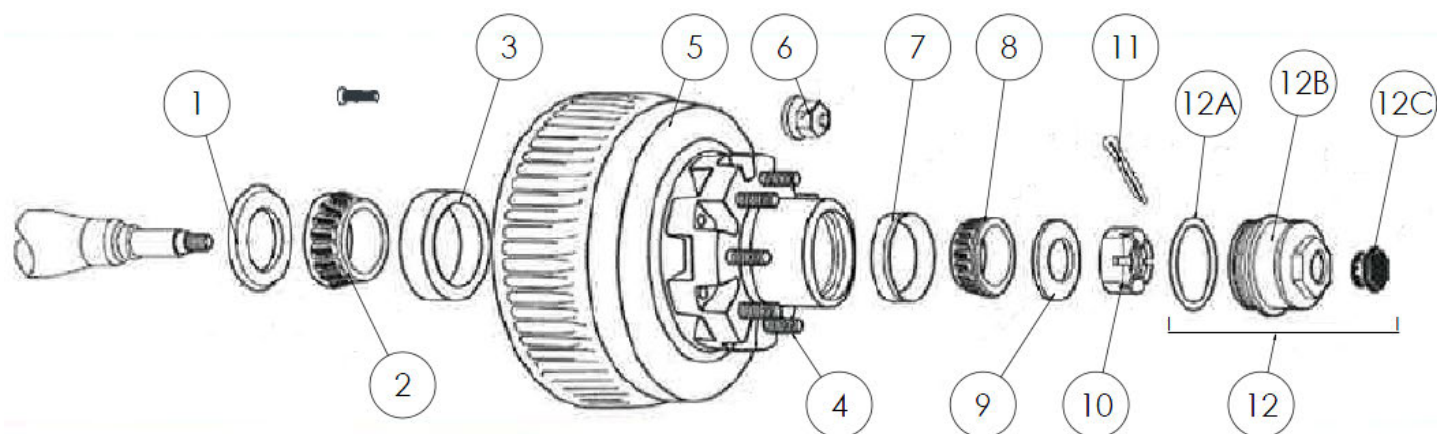
*TPT00002 parts breakdown located on page 18

**TPT00135, previous generation, parts breakdown located on page 19

**TPT00500, improved stanchion, parts breakdown located on page 20

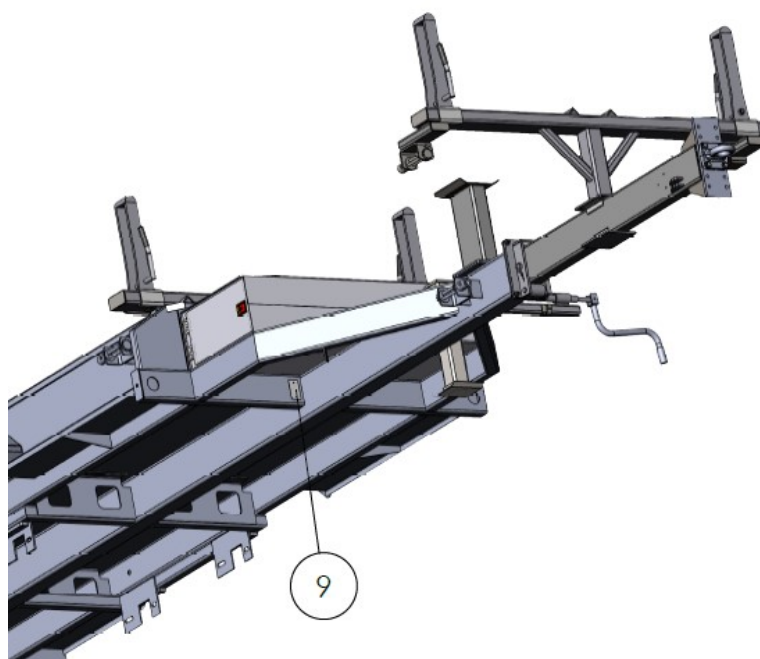
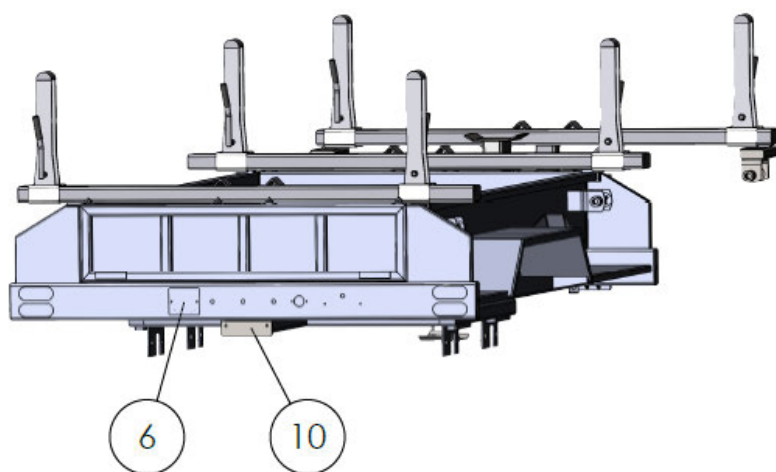
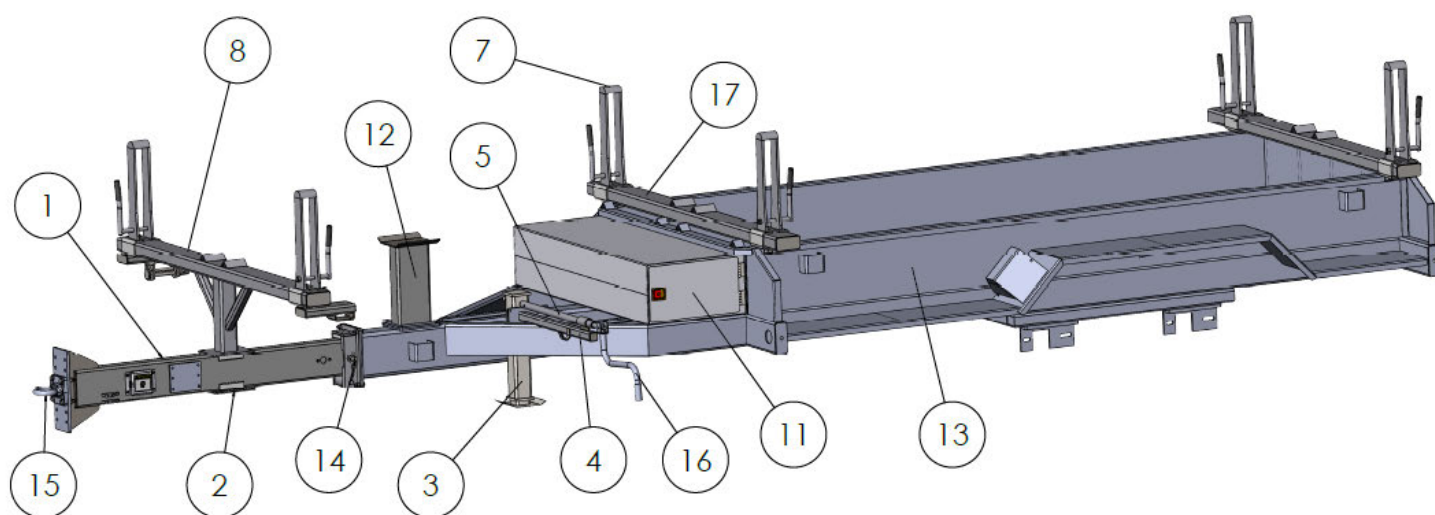
LK111PT AXLE

ITEM NO.	PART NUMBER	DESCRIPTION	QTY.
1	MP5-5758	ELECTRIC BRAKE ASSY - 12-1/4" X 5" - 12K TO 16K - ROAD-SIDE	1
2	MP5-5759	ELECTRIC BRAKE ASSY - 12-1/4" X 5" - 12K TO 16K - CURBSIDE	1
3	TPT00202	HANGER KIT - SINGLE - 10K TO 16K FOR 2.5" SLIPPER SPRING	1
4	TPT00201	16K AXLE - 74" HUB TO HUB - 43" SPRING C-C - 10 STUD ON 8.75" BC - ELECTRIC BRAKE - 2.5" LONG SPRING	1
5	TRD0082001SM	235/75R17.5H DT-23 ON 10 STUD X 8.75" BC STEEL WHEEL	4
6	DCL00738	DECAL - TIRE AND LOADING INFORMATION - LK111PT	1

LK111PT AXLE (Cont.)

ITEM NO.	PART NUMBER	DESCRIPTION	QTY.
1	TPT00301-1	Oil Seal	2
2	TPT00301-2	Inner Bearing	2
3	TPT00301-3	Inner Race	2
4	TPT00301-4	Stud - 5/8"-18	20
5	MP5-5760	16K ELECTRIC HUB AND DRUM - 10 STUD ON 8.75" BOLT CIRCLE	2
6	TPT00301-6	Swivel Flange Nut	20
7	TPT00301-7	Outer Race	2
8	TPT00301-8	Outer Bearing	2
9	TPT00301-9	Spindle Washer	2
10	TPT00301-10	Spindle Nut	2
11	TPT00301-11	Cotter Pin	2
12	TPT00301-12	Oil Cap, Complete Assembly	2
12A	TPT00301-12A	Oil Ring	2
12B	TPT00301-12B	Oil Cap	2
12C	TPT00301-12C	Oil Cap Plug	2

TPT00140, LK122PT POLE TRAILER ASSEMBLY



TPT00140, LK122PT POLE TRAILER ASSEMBLY (Cont.)

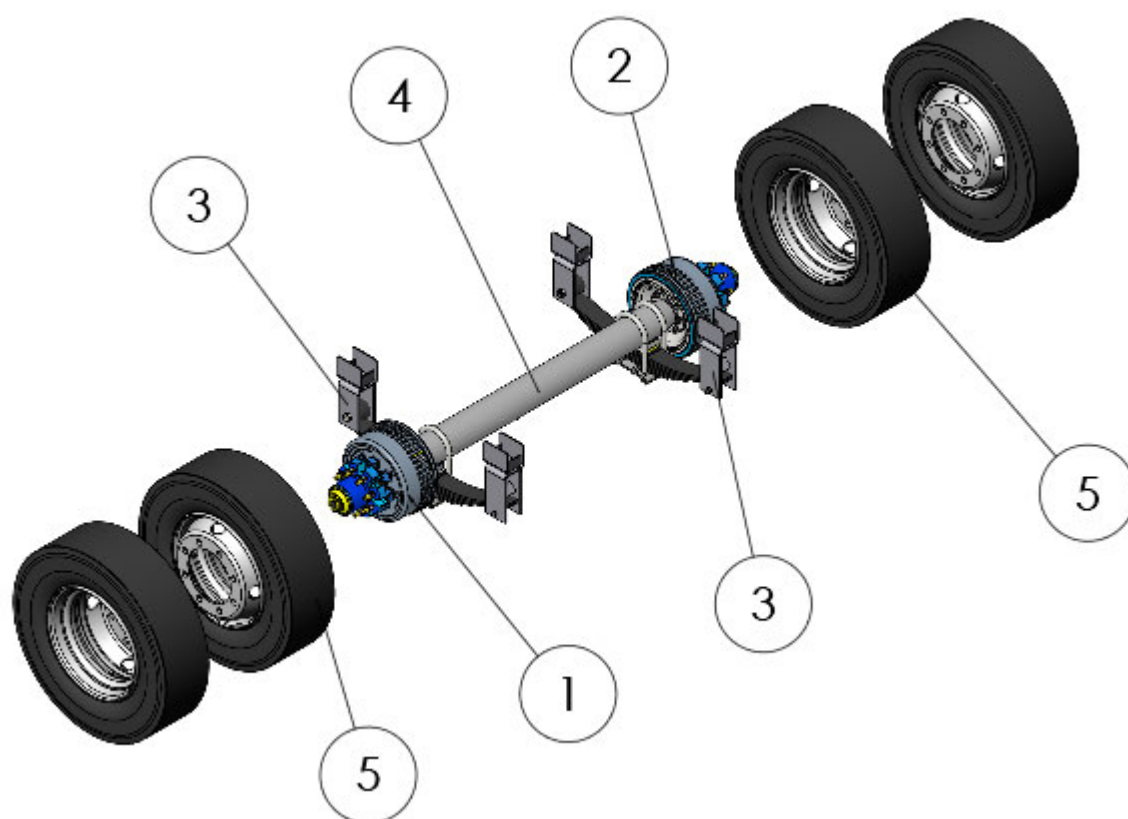
ITEM NO.	PART NUMBER	DESCRIPTION	QTY.	PAGE NO.
1	TPT00002*	SLIDE ASSEMBLY	1	12
2	TPT00045	WELDMENT, BOLSTER BOT PLT	1	15
3	TPT00055	WELDMENT, JACK	1	15
4	TPT00060	WELDMENT, JACK EXTENSION	1	16
5	TPT00065	WELDMENT, CRANK EXT.	1	16
6	TPT00101	REAR ELECTRICAL COVER	1	16
7	TPT00135** OR TPT00500**	WELDMENT, STANCHION	6	13
8	TPT00085	WELDMENT, FRONT BOLSTER	1	21
9	TPT00106	ELECTRIC COVER	2	16
10	TPT00077	REAR CLOSE PLATE	1	20
11	TPT00020*	TOOL BOX ASSEMBLY	1	21
12	TPT00090	WELDMENT, CTR BOLSTER	1	21
13	TPT00145	WELDMENT, FRAME	1	22
14	TPT00314	1" DIA. STAINLESS HITCH PIN W/ TETHERED LINCH PIN	1	18
15	TPT00315	BOLT-ON PINTLE EYE	1	18
16	TPT00323	JACK CRANK	1	19
17	TPT00080	WELDMENT, BOLSTER	2	20

*TPT00002 parts breakdown located on page 18

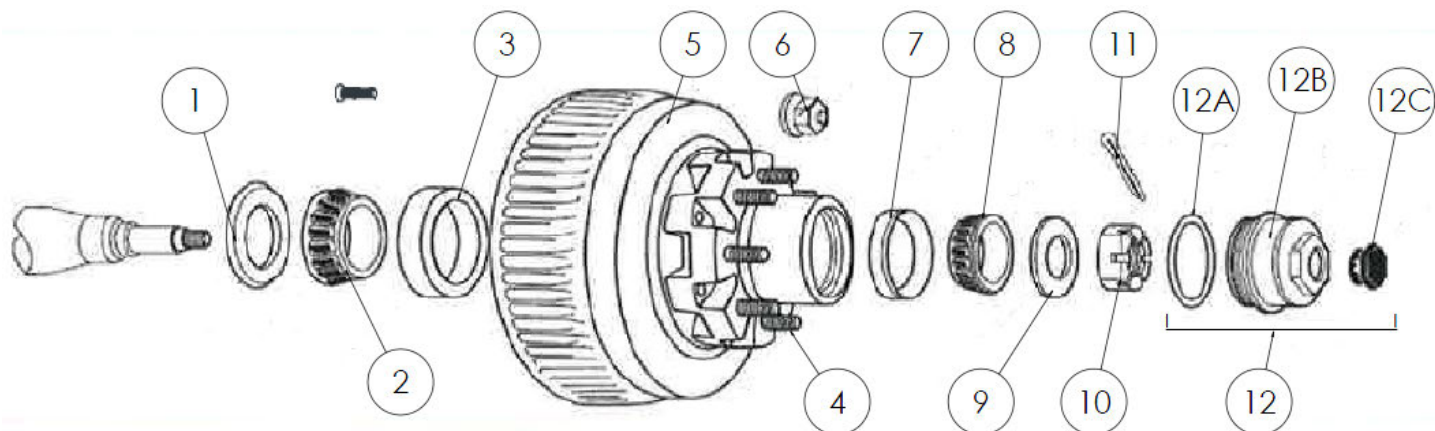
**TPT00135, previous generation, parts breakdown located on page 19

**TPT00500, improved stanchion, parts breakdown located on page 20

*TPT00020 parts breakdown located on page 22

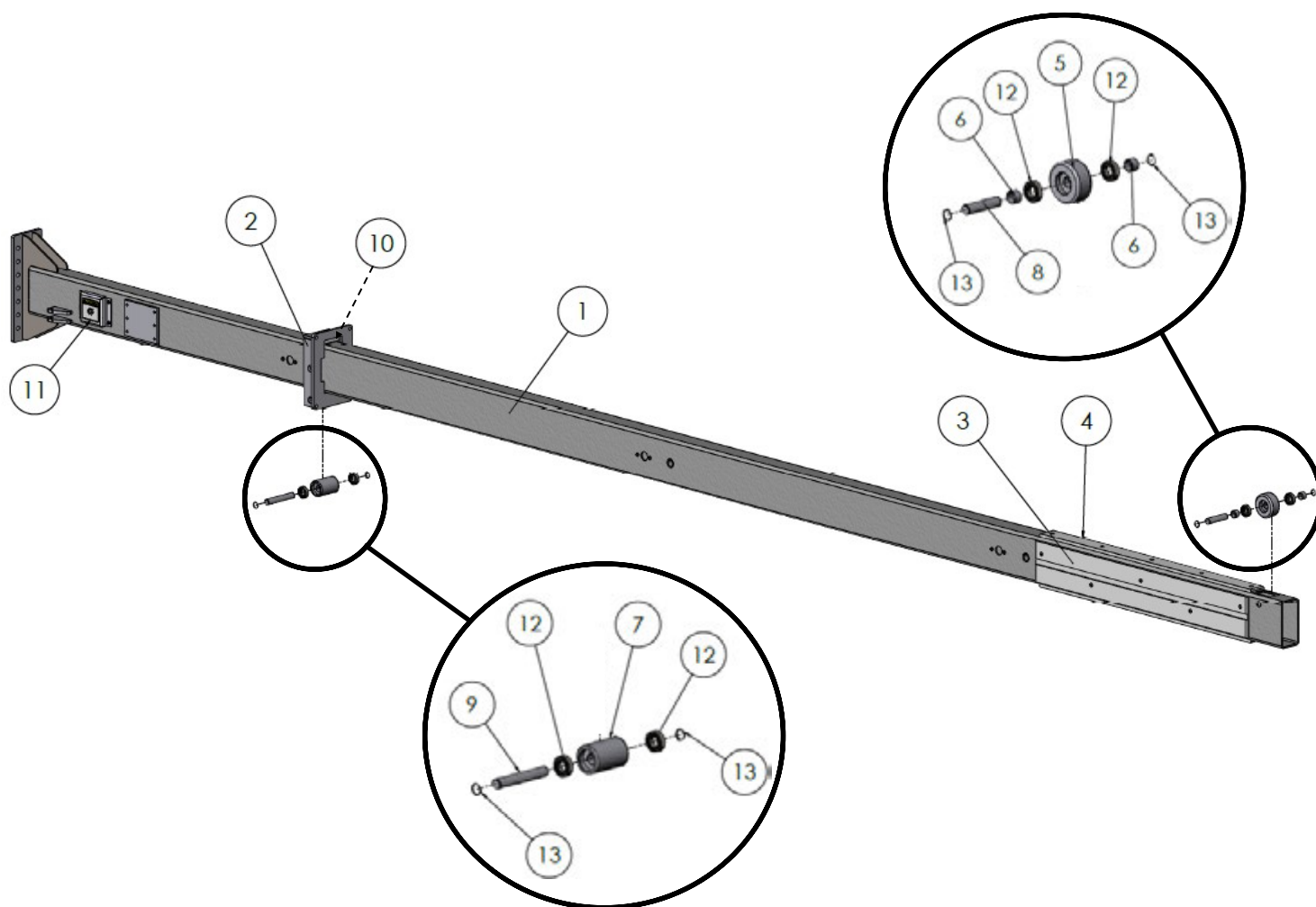
LK122PT AXLE

ITEM NO.	PART NUMBER	DESCRIPTION	QTY.
1	TBD	ELECTRIC BRAKE ASSY - 12-1/4" X 5" - 12K TO 16K - ROAD-SIDE	1
2	TBD	ELECTRIC BRAKE ASSY - 12-1/4" X 5" - 12K TO 16K - CURBSIDE	1
4	TPT00100	10K TORSION AXLE - 85-1/2" HUB TO HUB - 8 STUD ON 6.5" BC - 32 DEGREE DOWN - ELECTRIC BRAKE	2
5		235/75R17.5H DT-23 ON 8 STUD X 6.5" BC STEEL WHEEL	4
6	DCL00740	DECAL - TIRE AND LOADING INFORMATION - LK111PT	1

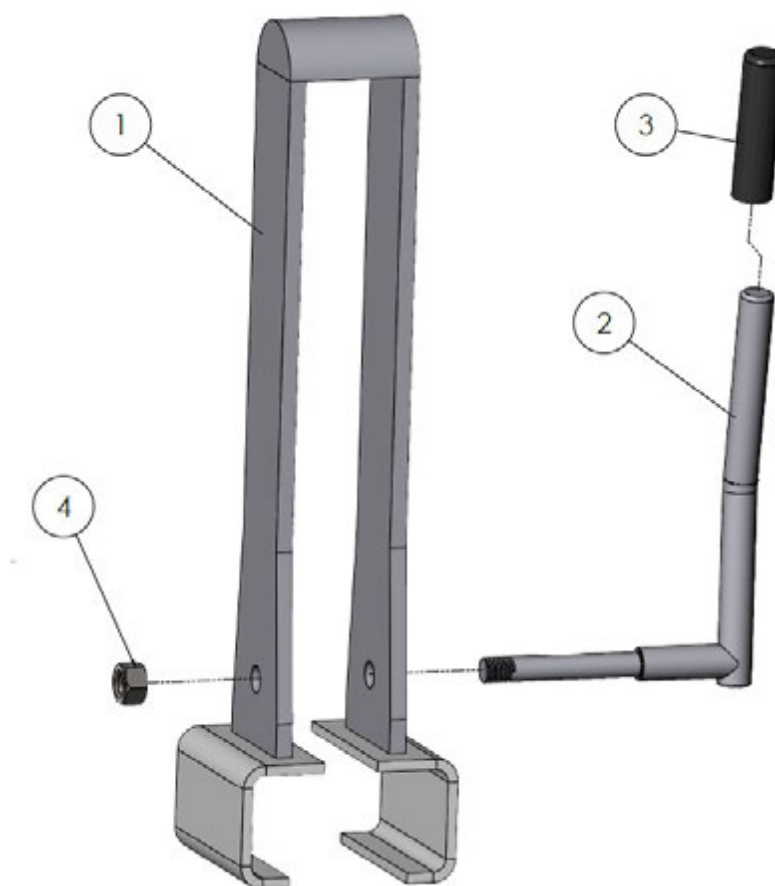
LK122PT AXLE (Cont.)

ITEM NO.	PART NUMBER	DESCRIPTION	QTY.
1	TPT00100-1	10K INNER OIL SEAL	4
2	TPT00100-2	10K INNER BEARING	4
3	TPT00100-3	10K INNER BEARING RACE	4
4		STUD	32
5	TPT00100-14	10K ELECTRIC HUB AND DRUM - 8 STUD ON 6.5" BC - 4.88" PILOT	4
6		Swivel Flange Nut	
7	TPT00100-7	10K OUTER BEARING RACE	4
8	TPT00100-8	10K OUTER BEARING	4
9	TPT00100-9	10K SPINDLE WASHER	4
10	TPT00100-10	10K SPINDLE NUT	4
11		Cotter Pin	2
12	TPT00301-12	Oil Cap, Complete Assembly	2
12A	TPT00301-12A	Oil Ring	2
12B	TPT00301-12B	Oil Cap	2
12C	TPT00301-12C	Oil Cap Plug	2

TPT00002, SLIDE ASSEMBLY

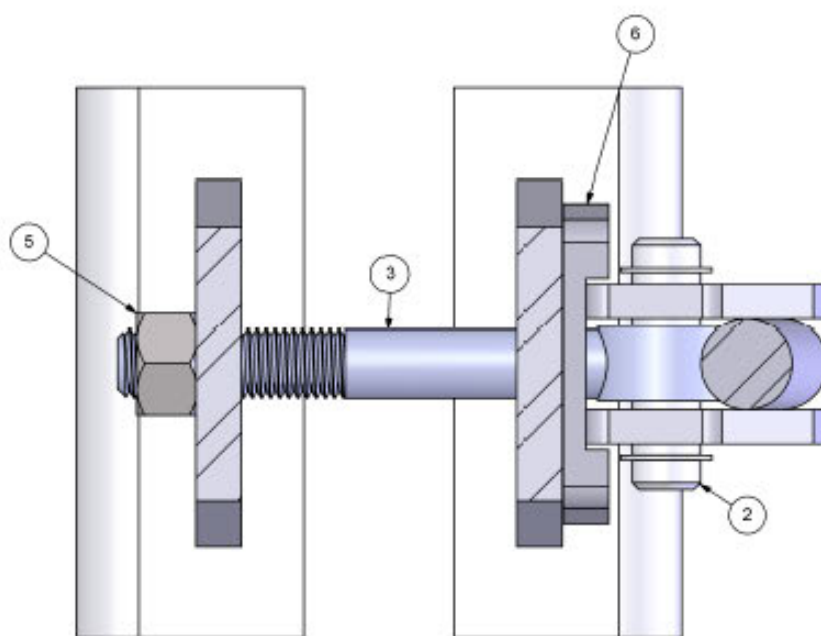
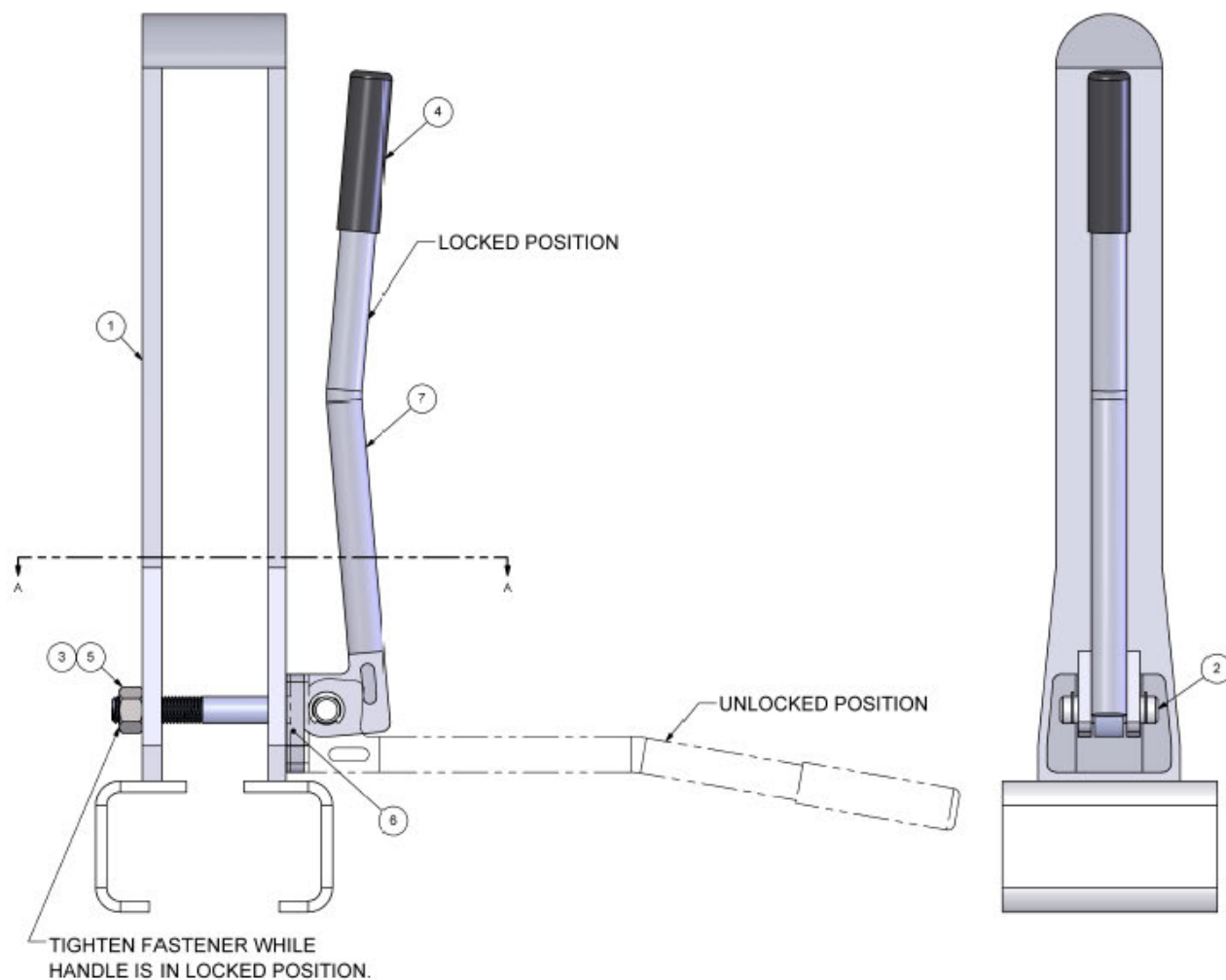


ITEM NO.	PARTNUMBER	DESCRIPTION	QTY.	PAGE NO.
1	TPT00015	WELDMENT, SLIDE TUBE	1	14
2	TPT00225	WELDMENT, PIN FLANGE	1	14
3	TPT00032	SIDE SLIDE	2	14
4	TPT00033	TOP SLIDE	2	14
5	TPT00041	REAR SLIDE ROLLER	1	14
6	TPT00042	REAR ROLLER SPACER	2	14
7	TPT00043	FRONT SLIDE ROLLER	1	15
8	TPT00044	REAR ROLLER SHAFT	1	15
9	TPT00046	FRONT ROLLER SHAFT	1	15
10	TPT00049	FRONT SLIDE	1	15
11	TPT00061	SUPPORT TUBE PLATE	1	16
12	TPT00319	2" OD X 1" ID SEALED ROLLER BEARING - 1.5K STATIC - 2.9K DYNAMIC CAPACITY	4	19
13	TPT00320	1" EXTERNAL RETAINING RING - YELLOW CHROMATE	4	19

TPT00135, WELDMENT, STANCHION

ITEM NO.	PART NUMBER	DESCRIPTION	QTY.	PAGE NO.
1	TPT00139	WELDMENT, STANCHION FRAME, UNIVERSAL	1	17
2	TPT00110	WELDMENT, HANDLE	1	16
3	MP5-1051	HAND GRIP	1	
4	MP5-0851-1207	LOCK NUT, 3/4"	1	

TPT00500, WELDMENT, STANCHION HANDLE, UNIVERSAL CAM LOCK



SECTION A-A
SCALE 1 : 2

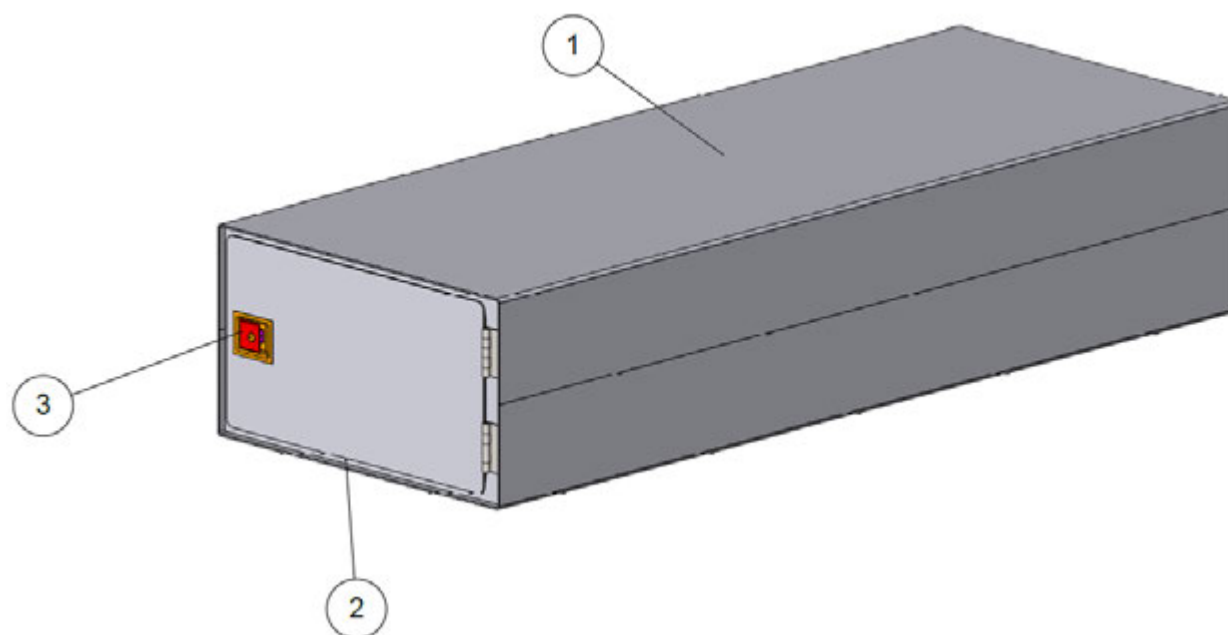
TPT00500, WELDMENT, STANCHION HANDLE, UNIVERSAL CAM LOCK (Cont.)

ITEM NO.	PART NO.	DESCRIPTION	QTY.
1	TPT00139	WELDMENT, STANCHION FRAME, UNIVERSAL	1
2	MP5-5814	HEADLESS CLEVIS PIN WITH RETAINING RING GROOVES; ZINC-PLATED STEEL, 3/4" DIAMETER 2" USABLE LENGTH	1
3	MP5-5812	PARTIALLY THREADED ROD ENDBOLT; 3/4"-10, 2-1/2" LONG SHANK THREAD, 6" SHANK CENTER LENGTH	1
4	MP5-1051	HAND GRIP	1
5	MP5-0851-1207	LOCK NUT, 3/4"	1
6	TPT00501	WEAR PLATE - STANCHION HANDLE, UNIVERSAL CAM LOCK	1
7	TPT00505	STANCHION HANDLE WELDMENT	1

ADJUSTMENT PROCEDURE

1. WITH THE HANDLE IN THE LOCKED POSITION, INSTALL (5) AND TIGHTEN TO CONTACT
2. TIGHTEN AN ADDITIONAL 1/2 TURN TO PROPERLY TENSION
3. RELEASE AND RELOCK HANDLE AND CHECK FOR STANCHION MOTION
4. ADJUST (5) NUT IN 1/4 TURN INCREMENTS UNTIL HANDLE LOCKS CORRECTLY ON TUBE

TPT00020, TOOL BOX ASSEMBLY

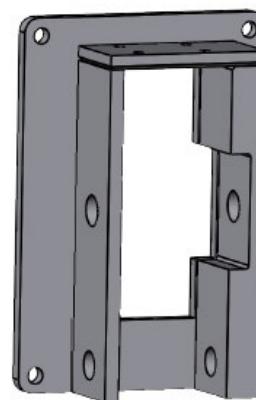


ITEM NO.	PART NUMBER	DESCRIPTION	QTY.
1	TPT00030	WELDMENT, TOOL BOX	1
2	TPT00048	DOOR SEAL	2
3	MP5-5799	TOOL BOX LATCH	2

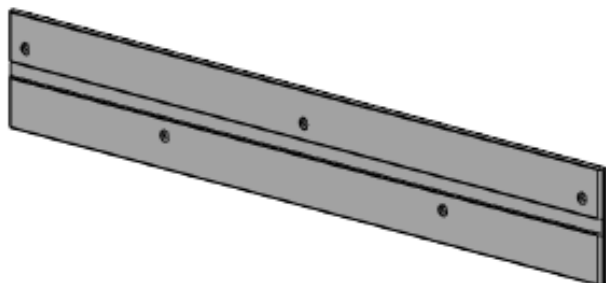
PARTS CATALOG

TPT00015

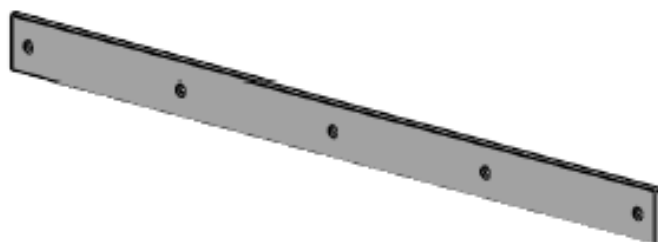
PART NO.	DESCRIPTION
TPT00015	WELDMENT, SLIDE TUBE

TPT00225

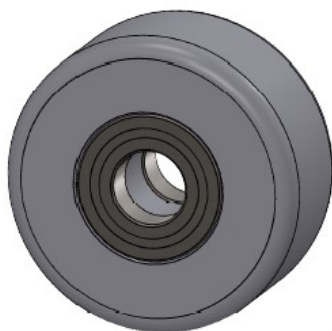
PART NO.	DESCRIPTION
TPT00225	WELDMENT, PIN FLANGE

TPT00032

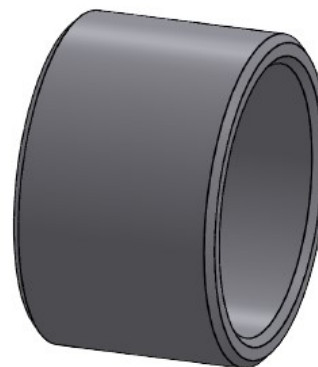
PART NO.	DESCRIPTION
TPT00032	SIDE SLIDE

TPT00033

PART NO.	DESCRIPTION
TPT00033	TOP SLIDE

TPT00041

PART NO.	DESCRIPTION
TPT00041	REAR SLIDE ROLLER

TPT00042

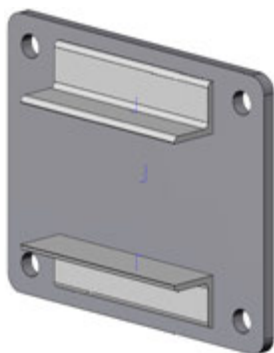
PART NO.	DESCRIPTION
TPT00042	REAR ROLLER SPACER

PARTS CATALOG (Cont.)**TPT00043**

PART NO.	DESCRIPTION
TPT00043	FRONT SLIDE ROLLER

TPT00044

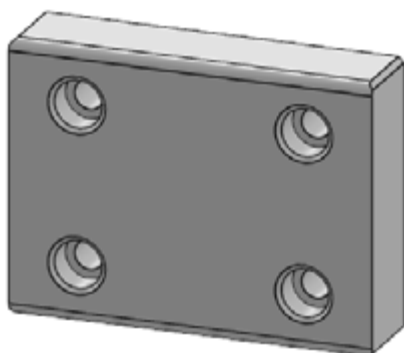
PART NO.	DESCRIPTION
TPT00044	REAR ROLLER SHAFT

TPT00045

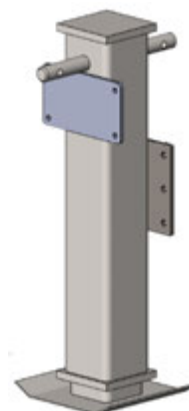
PART NO.	DESCRIPTION
TPT00045	WELDMENT, BOLSTER BOT PLT

TPT00046

PART NO.	DESCRIPTION
TPT00046	FRONT ROLLER SHAFT

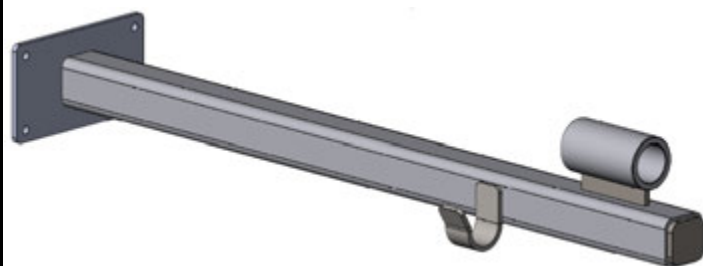
TPT00049

PART NO.	DESCRIPTION
TPT00049	FRONT SLIDE

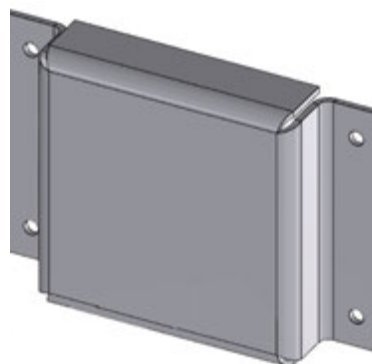
TPT00055

PART NO.	DESCRIPTION
TPT00055	WELDMENT, JACK

PARTS CATALOG (Cont.)

TPT00060

PART NO.	DESCRIPTION
TPT00060	WELDMENT, JACK EXTENSION

TPT00061

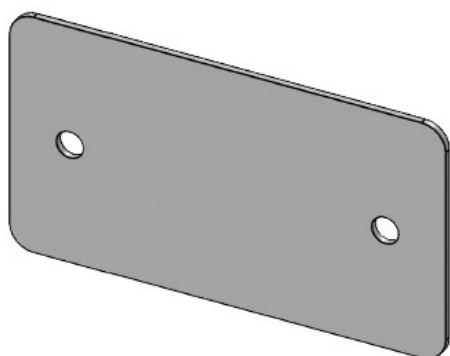
PART NO.	DESCRIPTION
TPT00061	SUPPORT TUBE PLATE

TPT00065

PART NO.	DESCRIPTION
TPT00065	WELDMENT, CRANK EXT.

TPT00101

PART NO.	DESCRIPTION
TPT00101	REAR ELECTRICAL COVER

TPT00106

PART NO.	DESCRIPTION
TPT00106	ELECTRIC COVER

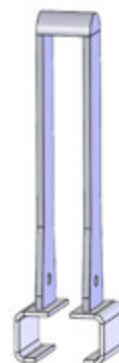
TPT00110

PART NO.	DESCRIPTION
TPT00110	WELDMENT, HANDLE

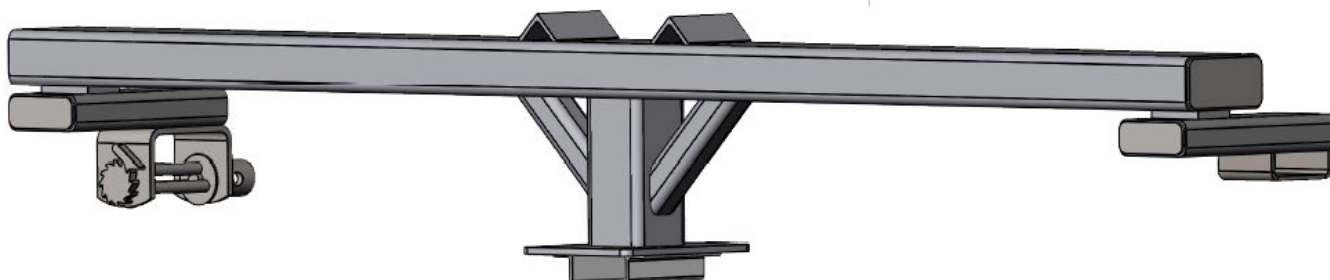
PARTS CATALOG (Cont.)

TPT00113

PART NO.	DESCRIPTION
TPT00113	MUD FLAP

TPT00139

PART NO.	DESCRIPTION
TPT00139	WELDMENT, STANCHION FRAME, UNIVERSAL

TPT00220

PART NO.	DESCRIPTION
TPT00220	WELDMENT, FRONT BOLSTER

*parts breakdown located on page 24

TPT00230

PART NO.	DESCRIPTION
TPT00230	WELDMENT, CTR BOLSTER

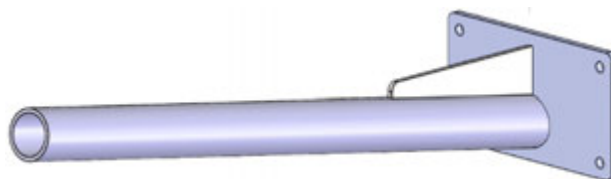
TPT00237

PART NO.	DESCRIPTION
TPT00237	ELECTRIC COVER

PARTS CATALOG (Cont.)

TPT00238

PART NO.	DESCRIPTION
TPT00238	REAR CLOSE PLATE

TPT00304

PART NO.	DESCRIPTION
TPT00304	WELDMENT - WINCH BAR HOLDER

TPT00305

PART NO.	DESCRIPTION
TPT00305	WELDMENT, FENDER RH

TPT00306

PART NO.	DESCRIPTION
TPT00306	WELDMENT, FENDER LH

TPT00314

PART NO.	DESCRIPTION
TPT00314	1" DIA. STAINLESS HITCH PIN W/ TETHERED LINCH PIN

TPT00315

PART NO.	DESCRIPTION
TPT00315	BOLT-ON PINTLE EYE

PARTS CATALOG (Cont.)

TPT00319**PART NO. DESCRIPTION**

TPT00319 2" OD X 1" ID SEALED ROLLER BEARING -
1.5K STATIC - 2.9K DYNAMIC CAPACITY

TPT00320**PART NO. DESCRIPTION**

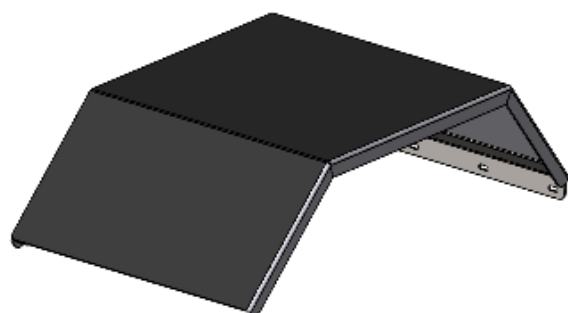
TPT00320 1" EXTERNAL RETAINING RING - YELLOW
CHROMATE

TPT00323**PART NO. DESCRIPTION**

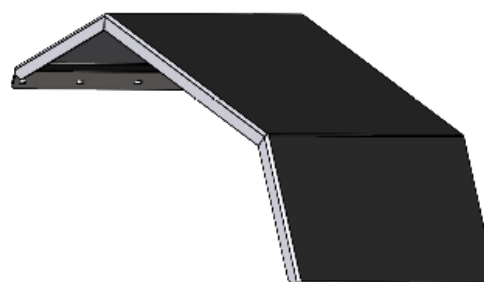
TPT00323 JACK CRANK

SLR00088**PART NO. DESCRIPTION**

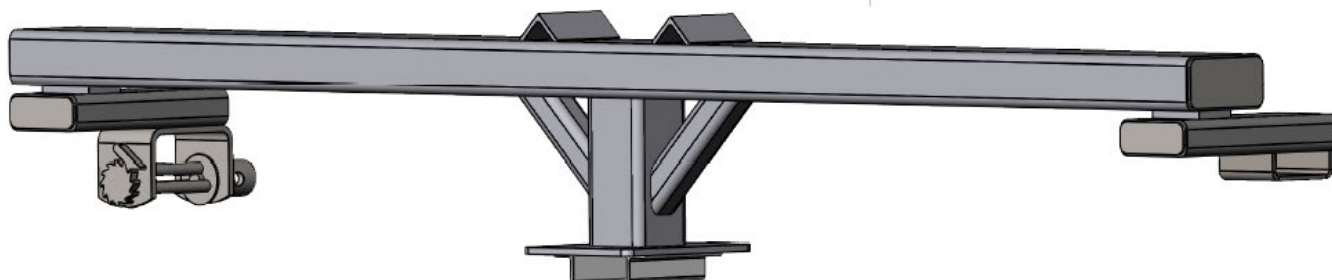
SLR00088 CHOCK

TPT00240**PART NO. DESCRIPTION**

TPT00240 WELDMENT, FENDER LH

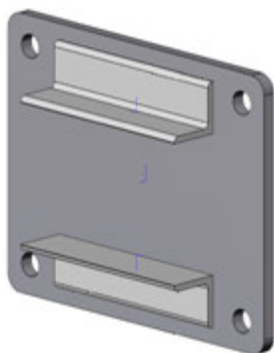
TPT00245**PART NO. DESCRIPTION**

TPT00245 WELDMENT, FENDER RH

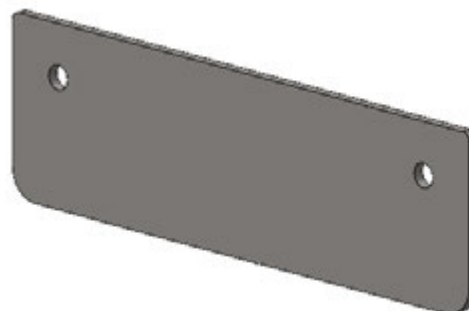
PARTS CATALOG (Cont.)**TPT00255**

PART NO.	DESCRIPTION
TPT00255	WELDMENT, FRONT BOLSTER

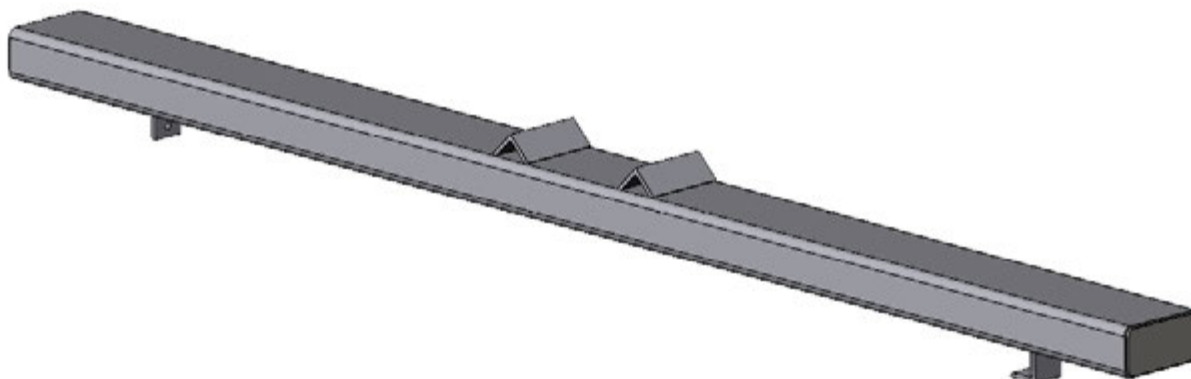
*parts breakdown located on page 24

TPT00258

PART NO.	DESCRIPTION
TPT00258	WELDMENT, BOLSTER BOT PLT

TPT00077

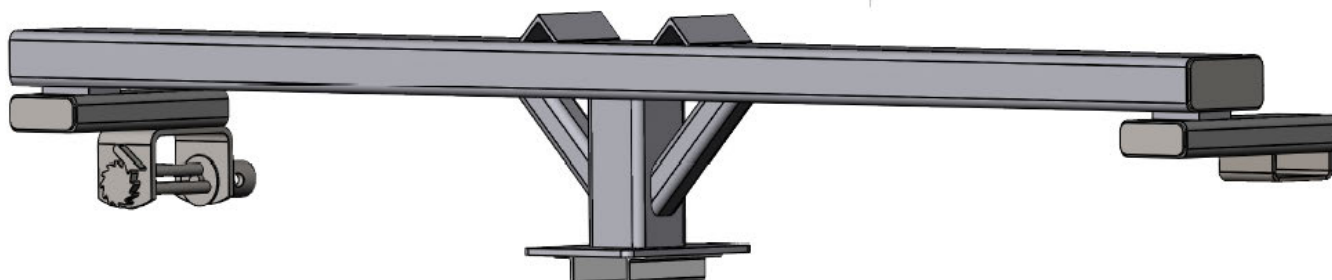
PART NO.	DESCRIPTION
TPT00077	REAR CLOSE PLATE

TPT00080

PART NO.	DESCRIPTION
TPT00255	WELDMENT, BOLSTER

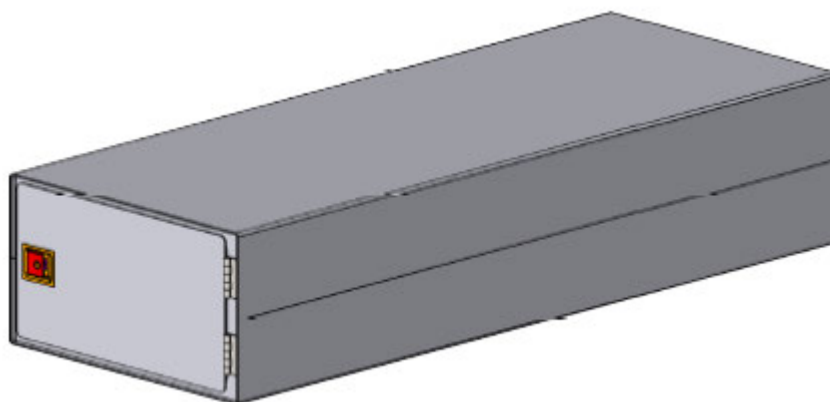
PARTS CATALOG (Cont.)**TPT00090**

PART NO.	DESCRIPTION
TPT00090	WELDMENT, CTR BOLSTER

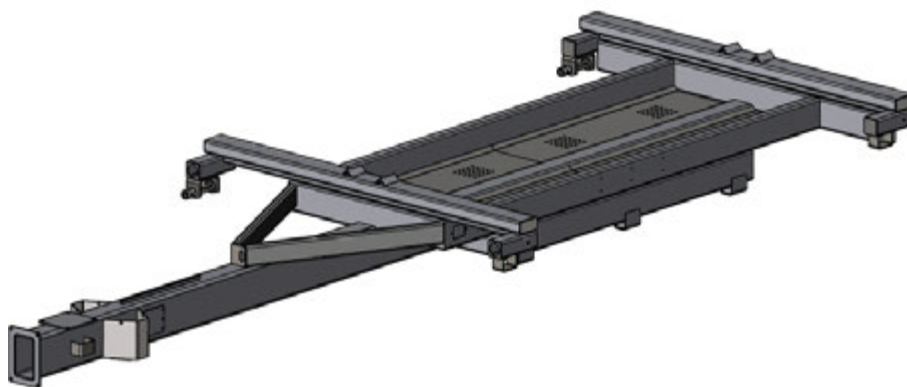
TPT00085

PART NO.	DESCRIPTION
TPT00085	WELDMENT, FRONT BOLSTER

*parts breakdown located on page 24

TPT00020

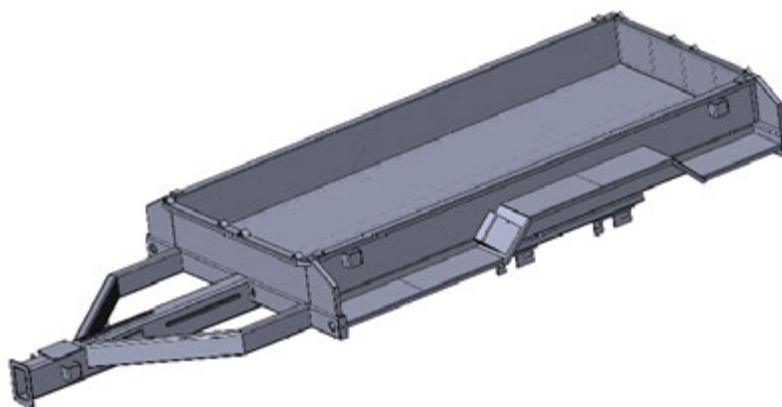
PART NO.	DESCRIPTION
TPT00020	TOOL BOX ASSEMBLY

PARTS CATALOG (Cont.)**TPT00310**

PART NO.	DESCRIPTION
TPT00310	WELDMENT, FRAME

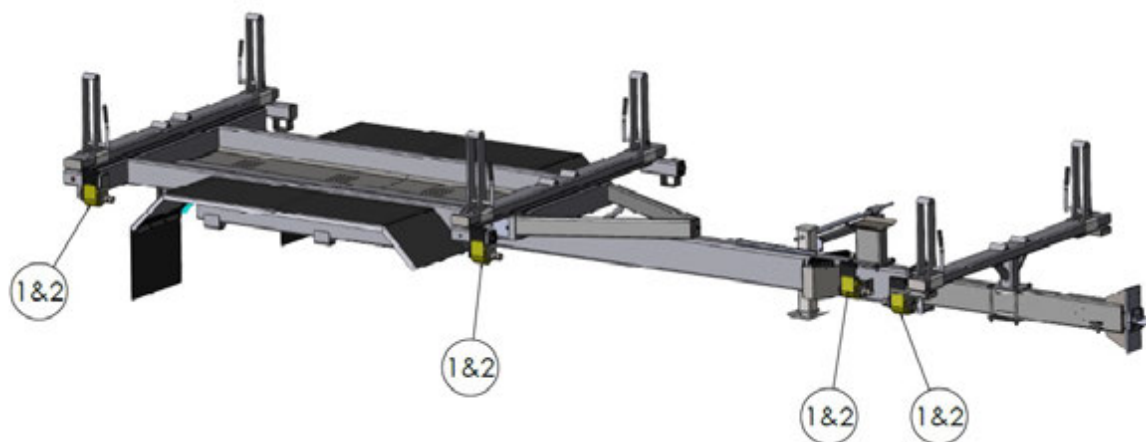
TPT00260

PART NO.	DESCRIPTION
TPT00260	WELDMENT, FRAME

TPT00145

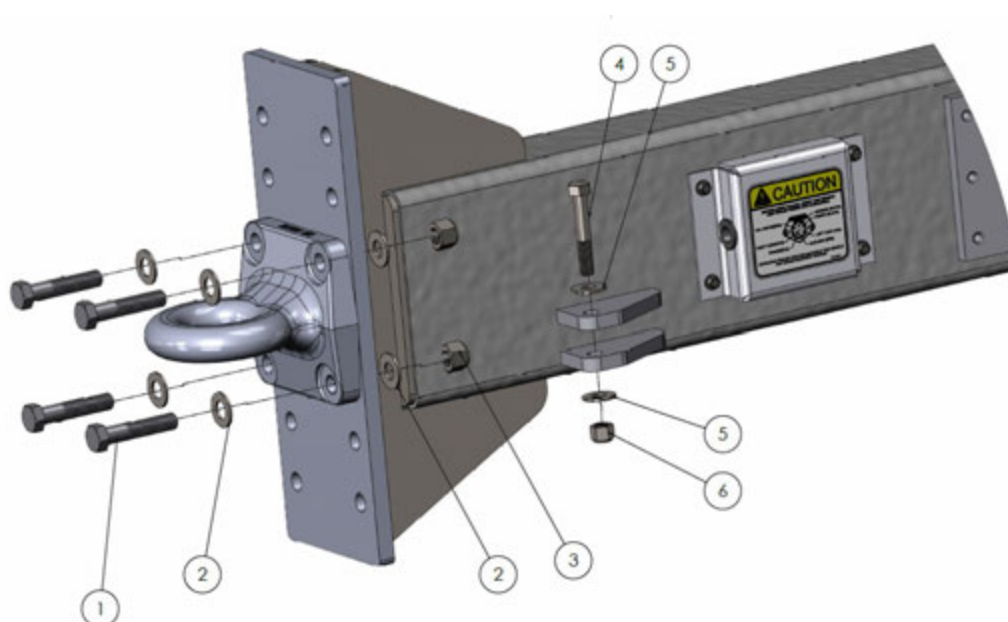
PART NO.	DESCRIPTION
TPT00145	WELDMENT, FRAME

HARDWARE



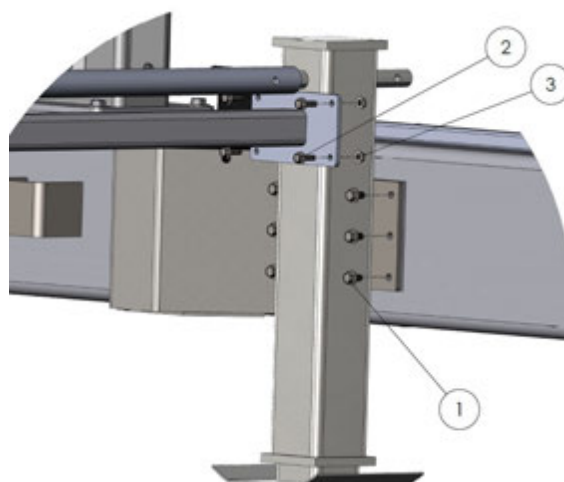
ITEM NO.	PART NUMBER	DESCRIPTION	QTY.
1	MP5-4752	LOW PROFILE, 3-BAR CARGO WINCH	4
2	MP5-5802	4" WIDE X 15'-0" FLAT HOOK RATCHET STRAP	4

*Later models have MP5-1394 higher capacity slot ratchet

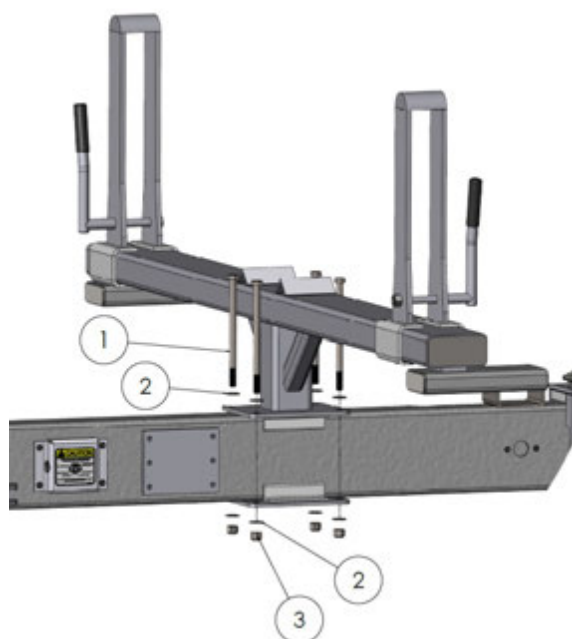


ITEM NO.	PART NUMBER	DESCRIPTION	QTY.
1	MP5-0096-168	HEX BOLT, 5/8 UNC X 3 LG	4
2	MP5-2567-20.5	WASHER, 5/8" FLAT, HARDENED, CZ	8
3	MP5-5771-1007	NYLON LOCK NUT - 5/8"-11 UNC - GRADE 8	4
4	MP5-0096-119	HEX HEAD BOLT, 1/2-13UNC x 3" LG.	2
5	MP5-2567-17	GRADE 8 FLAT WASHER - 1/2"	4
6	MP5-5771-807	GRADE 8 NYLOCK - 1/2"-11 UNC - YELLOW ZINC	2

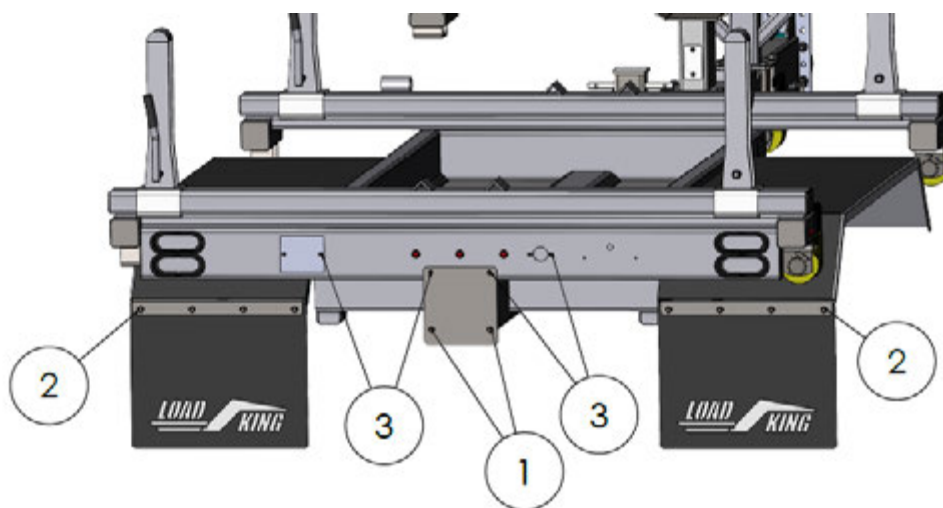
HARDWARE (Cont.)



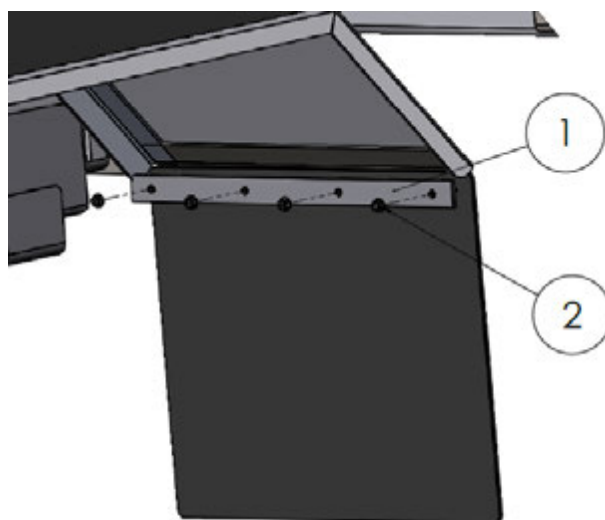
ITEM NO.	PART NUMBER	DESCRIPTION	QTY.
1	MP5-4897	FLANGE HEAD CAP SCREW - 3/8-16 UNC X 5/8" - GRADE 5 PLATED	6
2	MP5-5796	BOLT - 5/16"-18 UNC X 1" SERRATED FLANGE - GRD 5 PLATED	4
3	MP5-5795	NUT - 5/16" -18 UNC FLANGE - GRD 5 PLATED	4



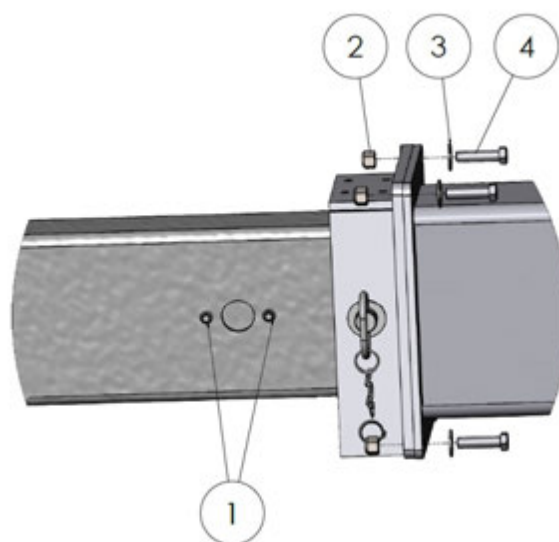
ITEM NO.	PART NUMBER	DESCRIPTION	QTY.
1	MP5-0096-460	HEX BOLT - 5/8"-11 UNC X 10" - GRADE 8 - YELLOW ZINC	4
2	MP5-2567-20.5	WASHER, 5/8" FLAT, HARDENED, CZ	8
3	MP5-5771-1007	NYLON LOCK NUT - 5/8"-11 UNC - GRADE 8	4

HARDWARE (Cont.)

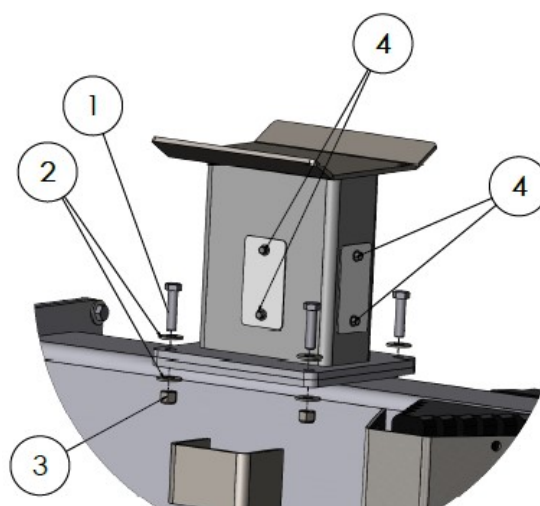
ITEM NO.	PART NUMBER	DESCRIPTION	QTY.
1	MP5-4897	FLANGE HEAD CAP SCREW - 3/8-16 UNC X 5/8" - GRADE 5 PLATED	2
2	MP5-4850	BOLT - 3/8-16 UNC X 1-1/2" SERRATED FLANGE HEAD - STAINLESS STEEL	8
3	MP5-5257	1/4-20 UNC X 1" SERRATED FLANGE HEAD CAP SCREW - 18-8 STAINLESS	6



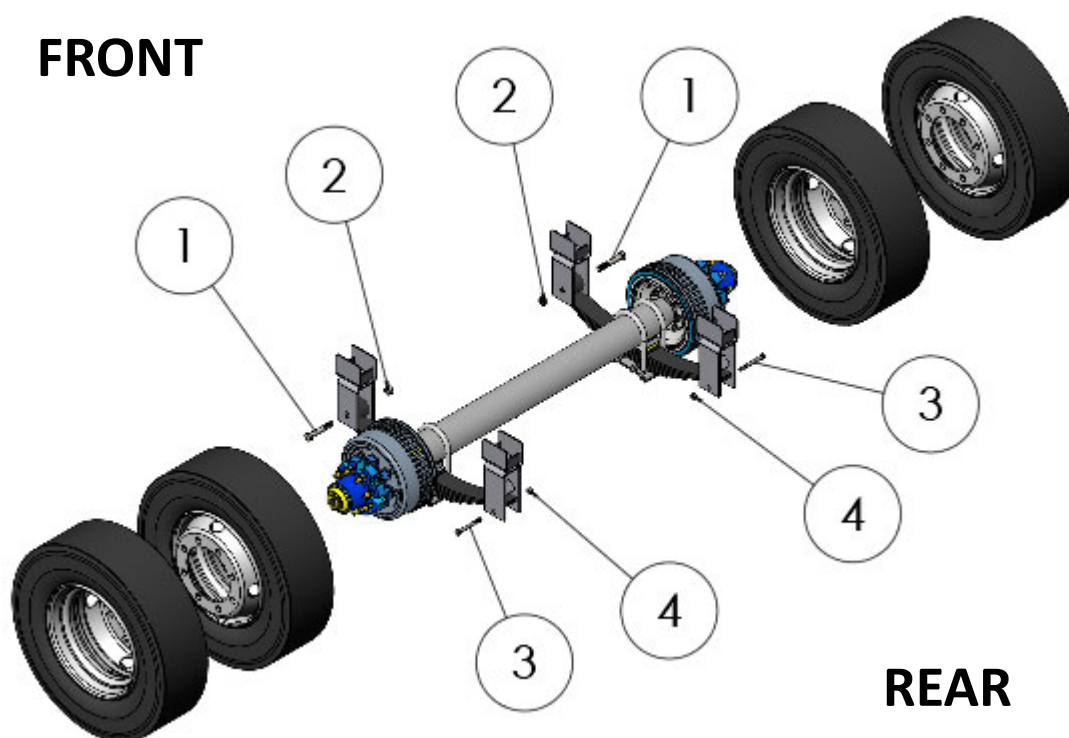
ITEM NO.	PART NUMBER	DESCRIPTION	QTY.
1	BB0-0080	Retainer Bar	2
2	MP5-4633	NUT - 3/8-16 UNC SERRATED FLANGE STAINLESS STEEL	8

HARDWARE (Cont.)

ITEM NO.	PART NUMBER	DESCRIPTION	QTY.
1	MP5-5257	1/4-20 UNC X 1" SERRATED FLANGE HEAD CAP SCREW - 18-8 STAINLESS	2
2	MP5-5771-807	GRADE 8 NYLOCK - 1/2"-11 UNC - YELLOW ZINC	4
3	MP5-2567-17	GRADE 8 FLAT WASHER - 1/2"	4
4	MP5-0096-115	HEX HEAD BOLT, 1/2-13 UNC X 2 LG	4

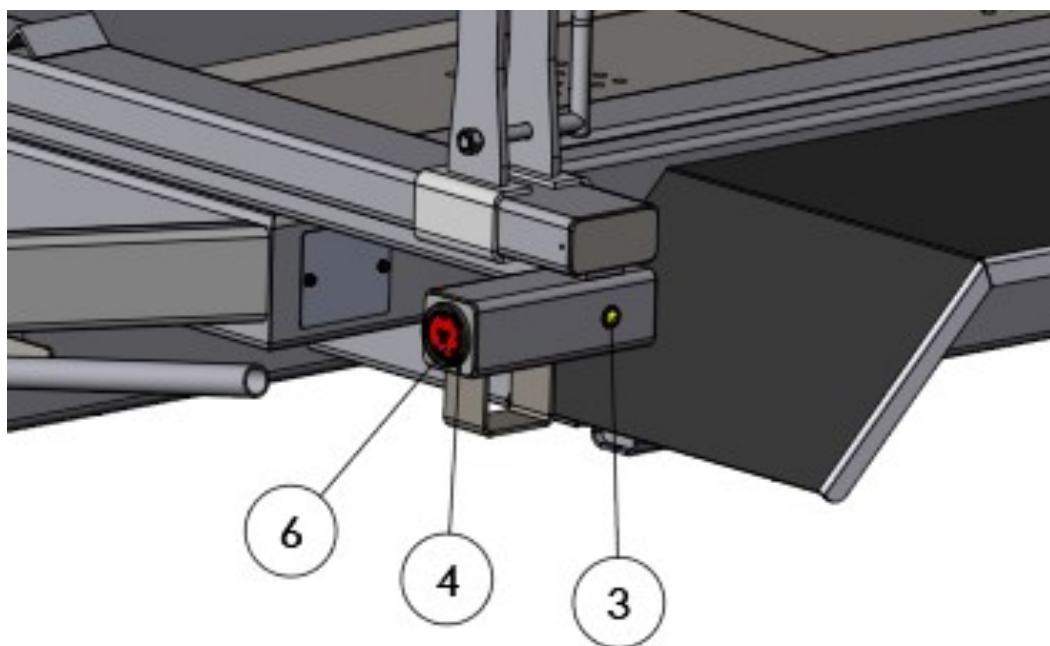
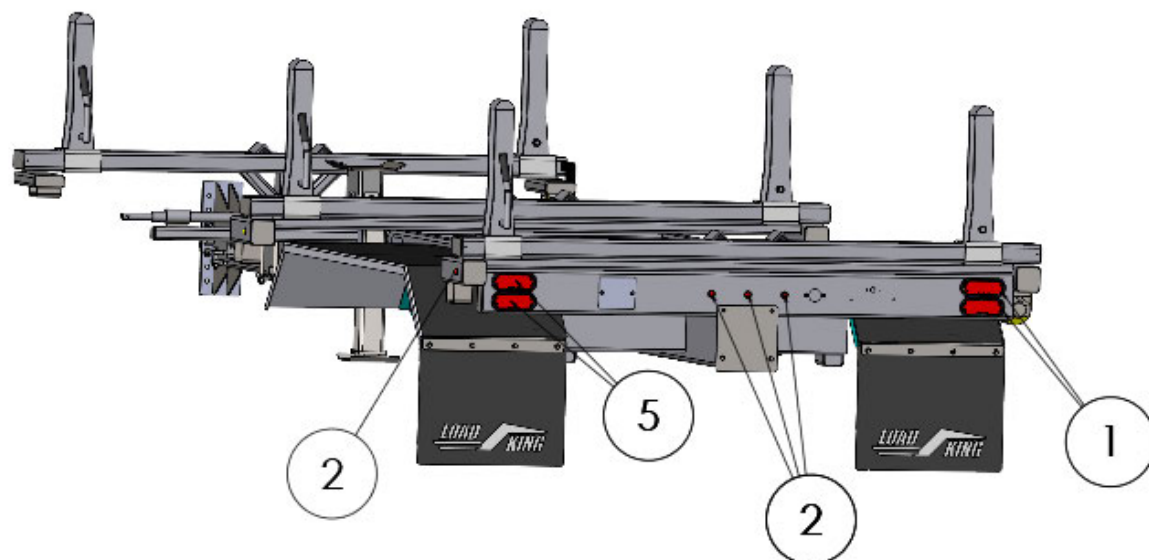


ITEM NO.	PART NUMBER	DESCRIPTION	QTY.
1	MP5-0096-115	HEX HEAD BOLT, 1/2-13 UNC X 2 LG	4
2	MP5-2567-17	GRADE 8 FLAT WASHER - 1/2"	8
3	MP5-5771-807	GRADE 8 NYLOCK - 1/2"-11 UNC - YELLOW ZINC	4
4	MP5-5257	1/4-20 UNC X 1" SERRATED FLANGE HEAD CAP SCREW - 18-8 STAINLESS	4

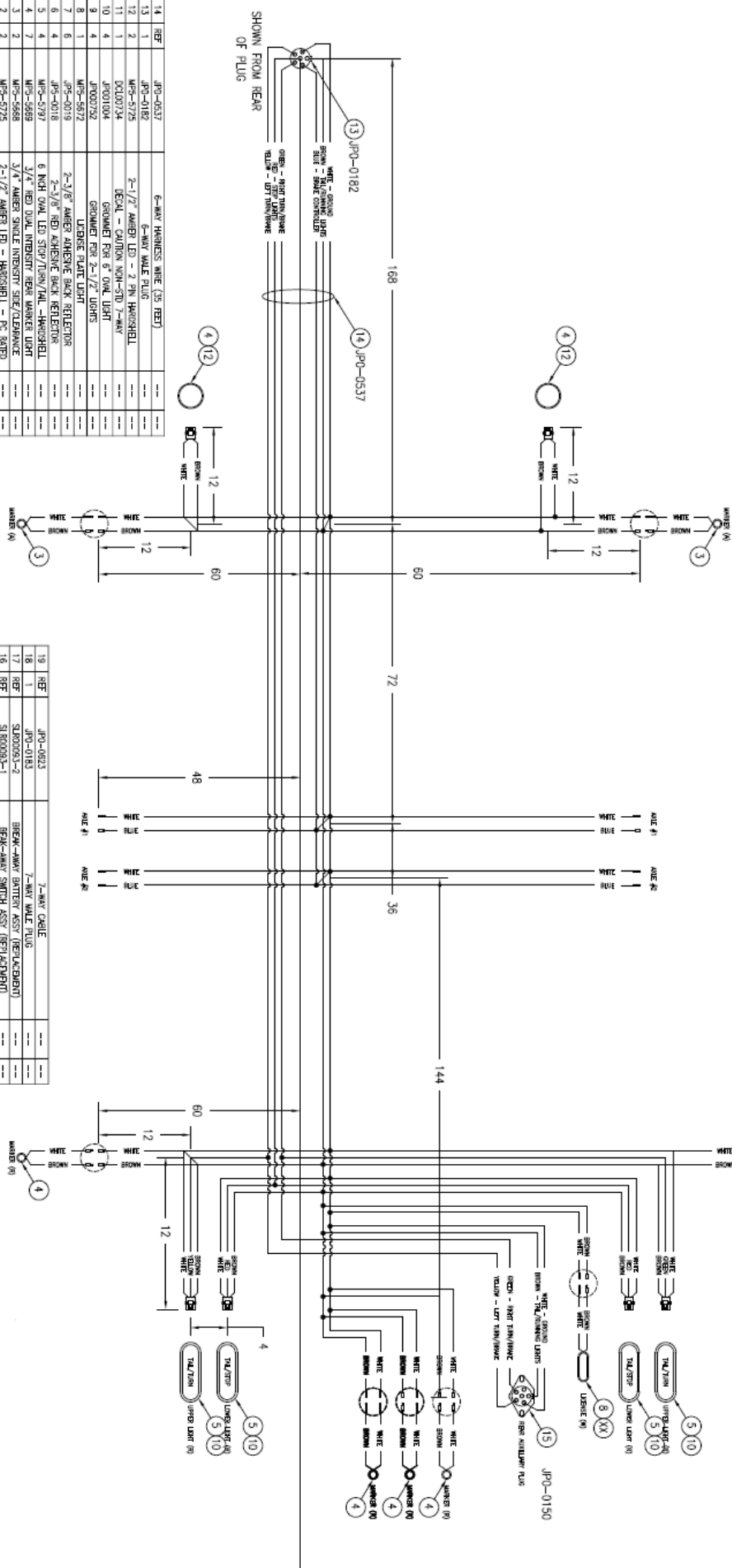
HARDWARE (Cont.)

ITEM NO.	PART NUMBER	DESCRIPTION	QTY.
1	MP5-0097-197	BOLT - 3/4"-16 UNF X 4-1/2" GRADE 5	2
2	MP5-0091-1227	NUT - 3/4"-16 UNF - GRADE 5	2
3	MP5-0094-125	HEX BOLT, 1/2 UNC X 4 1/2 LG	2
4	MP5-0091-807	HEX NUT, 1/2-13UNC	2

LIGHTS



ITEM NO.	PART NUMBER	DESCRIPTION	QTY.
1	JP001004	6" OVAL GROMET	4
2	MP5-5669	SINGLE DIODE, DUAL INTENSITY SIDE / CLEARANCE - RED - .180 BULLETS	5
3	MP5-5670	SINGLE DIODE, DUAL INTENSITY SIDE / CLEARANCE - AMBER - .180 BULLETS	2
4	JP000752	GROMMET FOR 2 1/2" LIGHTS	2
5	MP5-5797	6" OVAL S/T/T—LED HARDSHELL	4
6	MP5-5725	2-1/2" RED MARKER LIGHT - HARDSHELL	2



LOAD KING POLE TRAILER LABELS



1



2



3



4



5

LOAD KING POLE TRAILER LABELS (Cont.)



6



7



8



9

ITEM NO.	PART NUMBER	DESCRIPTION	QTY.
1	DCL00702	DECAL - DANGER/CAUTION/DANGER	1
2	DCL00703	DECAL - WARNING/INSPECT	1
3	DCL00707	DECAL - GROUNDING LUG	1
4	DCL00710	DECAL - WARNING COUPLER	1
5	DCL00711	DECAL - WARNING - LUG NUTS	1
6	DCL00712	DECAL - WARNING OVERLOAD HAZARD	1
7	DCL00720-B	DECAL - CTOS LOAD KING - 2" X 7" BLACK LETTERS	2
8	DCL00721-B	DECAL - CTOS LOAD KING - 3" X 9" BLACK	2
9	DCL00744	DECAL - WARNING - UNIVERSAL CALIFORNIA PROP 65	1

LOAD KING WARRANTY

Load King (herein after referred to as the COMPANY) warrants all products manufactured by it and purchased by you to be free from defects in material and manufacture at the time of shipment, for one (1) year from date of delivery. The COMPANY will furnish replacements for such parts as the COMPANY finds to have been defective at the time of delivery or, at the COMPANY's option, will make or authorize repairs to such parts, provided that, upon request, such parts are returned, transportation is prepaid to the factory from which they were shipped.

This warranty shall not apply to any Product which has been subjected to misuse, misapplication, overloading, neglect (including but not limited to use of unauthorized parts or attachments), adjustments or repair. Engines, motor, tires, wheels, suspensions, axles, etc. and any accessories furnished with or used in the COMPANY's products, but which are not manufactured by the COMPANY, are not warranted by the COMPANY but are sold only with the express warranty, if any, or the manufacturers thereof. This warranted is limited to the first purchaser/user and is not transferable.

THE FOREGOING IS IN LIEU OF ALL OTHER WARRANTIES, WHETHER EXPRESSED OR IMPLIED (INCLUDING, WITHOUT LIMITATIONS, OF MERCHANTABILITY AND FITNESS OF ANY PRODUCT FOR A PARTICULAR PURPOSE), AND OF ANY OTHER OBLIGATION OR LIABILITY ON THE PART OF THE COMPANY. THERE ARE NO WARRANTIES WHICH EXTEND BEYOND THE DESCRIPTION OF THE FACE THEREOF.

LIMITATION OF LIABILITY

It is expressly understood and agreed by you that the COMPANY's liability for its products, whether due to breach of warranty, or otherwise is limited to the furnishing of such replacement parts, F.O.B. factory, and the COMPANY will not be liable for any other injury, loss, damage, or expense, whether direct or consequential, including but not limited to loss of use, income, profit, or production, injury to person or increase in cost of operation, spoilage of or damage to material, arising out of or in connection with the sale, installation, use or inability to use, or the repair or replacement of the COMPANY's products. All used vehicles and/or bodies are sold in the "AS IS" condition and no expressed or implied warranty is made.

All of COMPANY'S Products are of high quality and are manufactured in conformity with the best commercial practices in the various lines. The COMPANY guarantees all Products manufactured by it to be free from defects in material and manufactured at the time of shipment, for one (1) year from date of delivery. In addition, the COMPANY guarantees the portion of the product to be considered structural for one (1) year from date of manufacture.

While Load King, LLC. designs and manufactures its specific equipment configurations to industry standards, it is ultimate responsibility of the buyer/operator to assure that all loads are properly loaded and distributed. All loads must comply with the applicable state and federal load limits.

LOAD KING WARRANTY DATA RECORD

Pole Trailer Warranty Form Submission			Date	
Date of Delivery				
Model Number				
S/N				
Dealer				
Address				
Customer				
Address				

Record this information at the time that warranty registration form is completed and returned to Load King

REVISION CONTENT

REVISION	DATE	DESCRIPTION
A	1/4/18	INITIAL RELEASE
B	6/23/20	ADDED: LK112PT AXLE, LK111PT AXLE, LK122PT AXLE, TPT00500, TPT00020, ELECTRICAL SCHEMATIC UPDATED: MP5-4583 WAS MP5-5802



Revisions to parts manual will be updated on the load king website, continue to check <https://loadkingtrailers.com/> for the latest version.



Load King

PO Box 427

Elk Point, South Dakota, USA 57025-0427

Toll Free: (888) 264-5522