

3

# BOTTOMBEAR BB90/95

**BBB** BOTTOM BRACKET  
/BB0-26

BBB CYCLING.COM  
SPAARNEPLEIN 2, 2515 VK  
THE HAGUE, THE NETHERLANDS

EN MANUAL / DE HANDBUCH / FR MANUEL / NL HANDLEIDING / ES MANUAL / PT MANUAL /  
IT MANUALE / HU HASZNÁLATI UTASÍTÁS / PL PODRĘCZNIK / CZ UŽIVATELSKÁ PŘÍRUČKA  
/ JP 使用説明書 / RU РУКОВОДСТВО ПОЛЬЗОВАТЕЛЯ / SK MANUÁL / NO HÅNDBOK

## Components:

- ① Bottom bracket shell
- ② BB90/95 Bearings (x2)
- ③ Bearing shield (x2)
- ④ Spacers (if applicable)
- ⑤ Wave spring washer (x1)

● Included

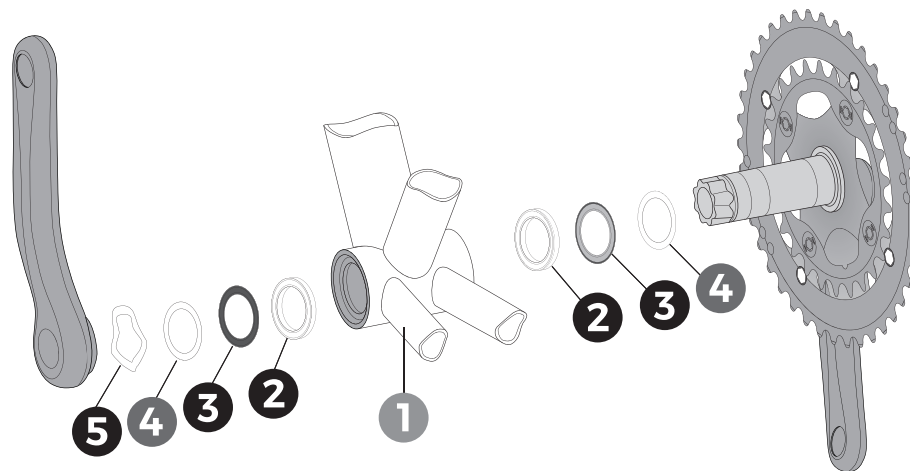
● Not Included

## Compatibility:

- BB90/95 (90/95 x Ø37mm) with Ø24mm spindle cranksets

## Recommended tools

- BTL-231 BearingPress set
- Torque wrench
- or other press tool
- Grease

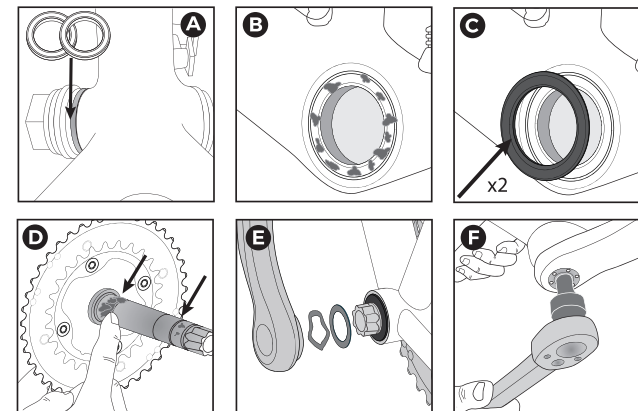


## IMPORTANT:

- \* Before installing a bottom bracket, use a reaming tool if required and make sure the bottom bracket (BB) shell ① is clean and free of metal chips, dirt and excess paint.
- \* Inspect the BB shell for width, ID, ovalization or anything that could cause potential problems.
- \* Always use a calibrated torque wrench to tighten crank bolts.
- \* BBB Cycling cannot guarantee compatibility with you frame and/or crank combination, consult your manufacturer for compatibility.
- \* BBB Cycling cannot be held responsible for any damage occurred.

## INSTALLATION:

- A. Install bearings using the BTL-231 BearingPress set  
Press the bearings ② into the BB shell as far as they go.
- B. Apply a layer of grease on the outer edge of the bearing ②.
- C. Install the bearing seals ③ on the bearings, with the alloy frame towards the bearing.
- D. Apply grease to the surfaces of the spindle that will contact the bearings.
- E. Add spacers ④ if applicable. If binding occurs or the crankset gets loose over time, try removing spacers or use the Wave spring washer ⑤ to add preload on the bearings and crankset.
- F. Install crankset following manufacturers specifications.



Find your translation on  
BBBcycling.com



## ! WARNING

Sold only by professional bicycle dealers.  
For proper installation, ask your BBB dealer.  
Not following the instructions in this manual may cause damage to the product not covered under warranty, damage to the bicycle, or cause an accident resulting in injury or death.

BBB has no responsibility for misprints or changed technical content.

