



Project \_\_\_\_\_  
 AIA # \_\_\_\_\_ SIS # \_\_\_\_\_  
 Item # \_\_\_\_\_ Quantity \_\_\_\_\_ C.S.I. Section 114000



## FT1000e *advansys* STEAM Flight-Type Dishwashing Machine



Advansys model shown



Complies with EPA Reduction of Lead in Drinking Water Act 2014

Meets requirements of ASSE Standard No. 1004

### SPECIFIER STATEMENT

The specified machine shall be a Hobart Ventless flight type dish machine, 58 gallons of final rinse consumption per hour, with dual rinse, hinged & insulated doors, 30" wide conveyor belt, sliding wash arms without caps, & microprocessor controls with ventless technology, auto clean, auto delime, energy recovery, automatic soil removal system (ASR), blower dryer, and water softener.

### STANDARD FEATURES

- + Pumped rinse system (pressure gauge not required)
- + Water usage 58 gph
- + Digital controls with machine diagnostics
- + Low temperature alert
- + Hinged insulated cabinet-style doors
- + 31" access on prewash, power wash and power rinse chambers; 20" access on dual rinse and ASR chambers
- + Start and stop switches at both ends
- + Doors open indicator
- + Drains open indicator
- + Door interlocks
- + 3½ H.P. prewash, power wash, and power rinse pump motors, all TEFC
- + Capless auto clean wash arms
- + Easy to remove stainless steel scrap pans and baskets
- + 30" wide conveyor belt
- + Dual rinse
- + Automatic soil removal system (ASR)
- + Auto clean
- + Auto delime
- + Ventless technology
- + Energy recovery
- + Front and rear panels
- + Variable speed conveyor
- + Electric booster heater
- + Configurable drain to load or unload
- + Blower dryer
- + WS-80 water softener

### OPTIONS & ACCESSORIES (Available at extra cost)

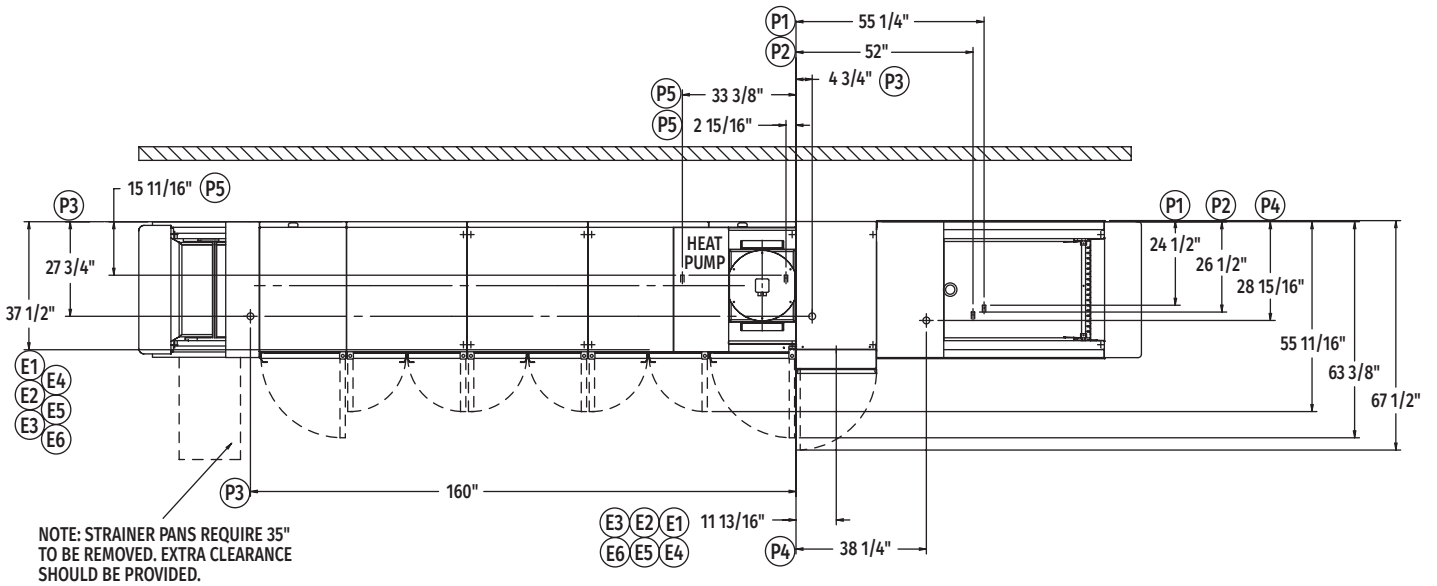
- Insulated split, vertical slide-up doors
- Multiple conveyor choices
- Factory mounted circuit breakers
- Correctional packages – standard, medium and maximum options (Contact Hobart for details)
- Flanged feet
- Water hammer arrestor/PRV (installed by others)
- Drain water tempering kit (installed by others)

FT SERIES – FT1000e *advansys* STEAM

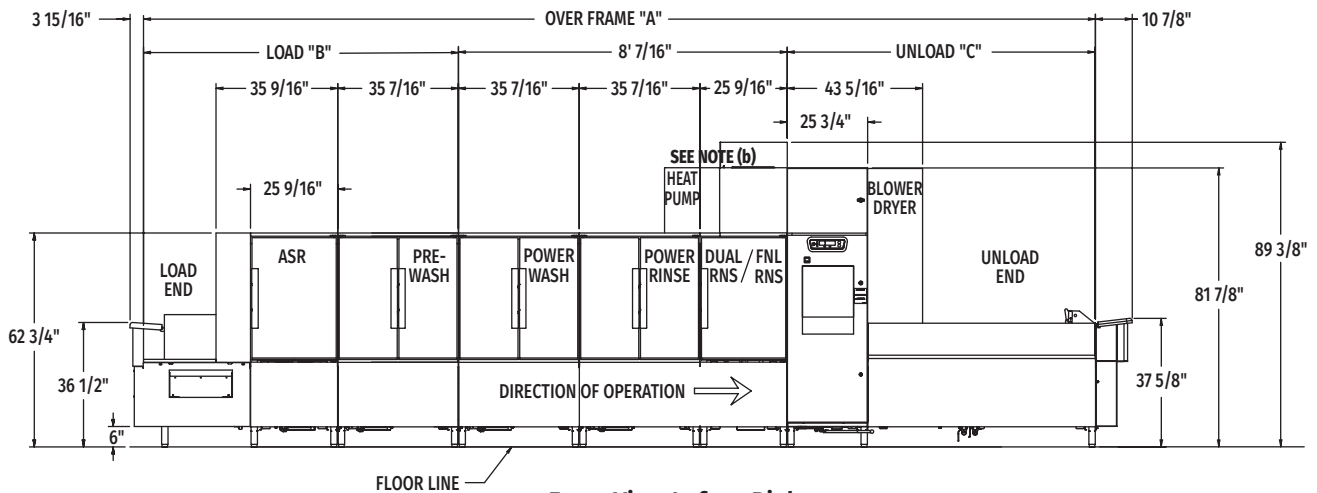
Approved by \_\_\_\_\_ Date \_\_\_\_\_ Approved by \_\_\_\_\_ Date \_\_\_\_\_



# FT1000e advansys STEAM Flight-Type Dishwashing Machine (Left to Right)



Top View Left to Right

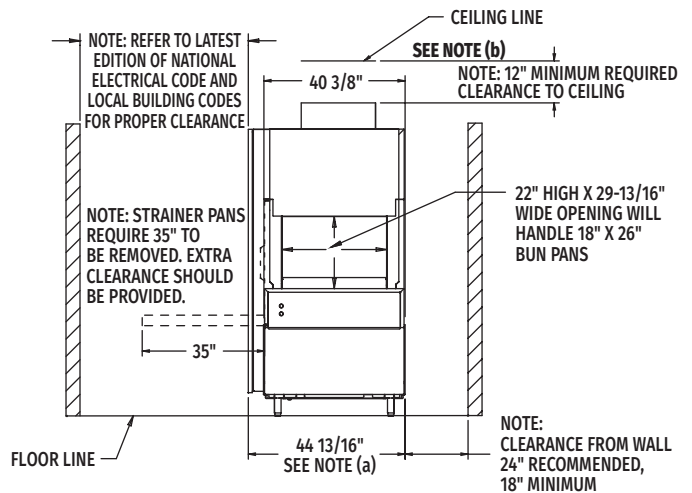


Front View Left to Right

**Note:** Control box electrical connections – see page 5.

MODEL NO.	"A"	"B"	"C"
FT1023e (7.5'-8'-7.5')	23' 3-1/2"	7' 8-1/2"	7' 6-1/2"
FT1024e (8.5'-8'-7.5')	24' 3-1/4"	8' 8-1/4"	7' 6-1/2"
FT1025e (9.5'-8'-7.5')	25' 3-3/32"	9' 8-3/32"	7' 6-1/2"
FT1025e (7.5'-8'-9')	24' 11-1/4"	7' 8-1/2"	9' 2-1/4"
FT1026e (8.5'-8'-9')	25' 11"	8' 8-1/4"	9' 2-1/4"
FT1027e (9.5'-8'-9')	26' 10-27/32"	9' 8-3/32"	9' 2-1/4"
FT1027e (7.5'-8'-11')	26' 10-7/8"	7' 8-1/2"	11' 1-7/8"
FT1028e (8.5'-8'-11')	27' 10-5/8"	8' 8-1/4"	11' 1-7/8"
FT1029e (9.5'-8'-11')	28' 10-15/32"	9' 8-3/32"	11' 1-7/8"
FT1030e (7.5'-8'-15')	30' 6-3/16"	7' 8-1/2"	14' 9-3/16"
FT1031e (8.5'-8'-15')	31' 5-15/16"	8' 8-1/4"	14' 9-3/16"
FT1032e (9.5'-8'-15')	32' 5-25/32"	9' 8-3/32"	14' 9-3/16"
FT1032e (7.5'-8'-17')	32' 5-3/4"	7' 8-1/2"	16' 8-3/4"
FT1033e (8.5'-8'-17')	33' 5-1/2"	8' 8-1/4"	16' 8-3/4"
FT1034e (9.5'-8'-17')	34' 5-11/32"	9' 8-3/32"	16' 8-3/4"

**Note:** Overall length of machine is Dimension "A" + 14-13/16"



Back/Unload End

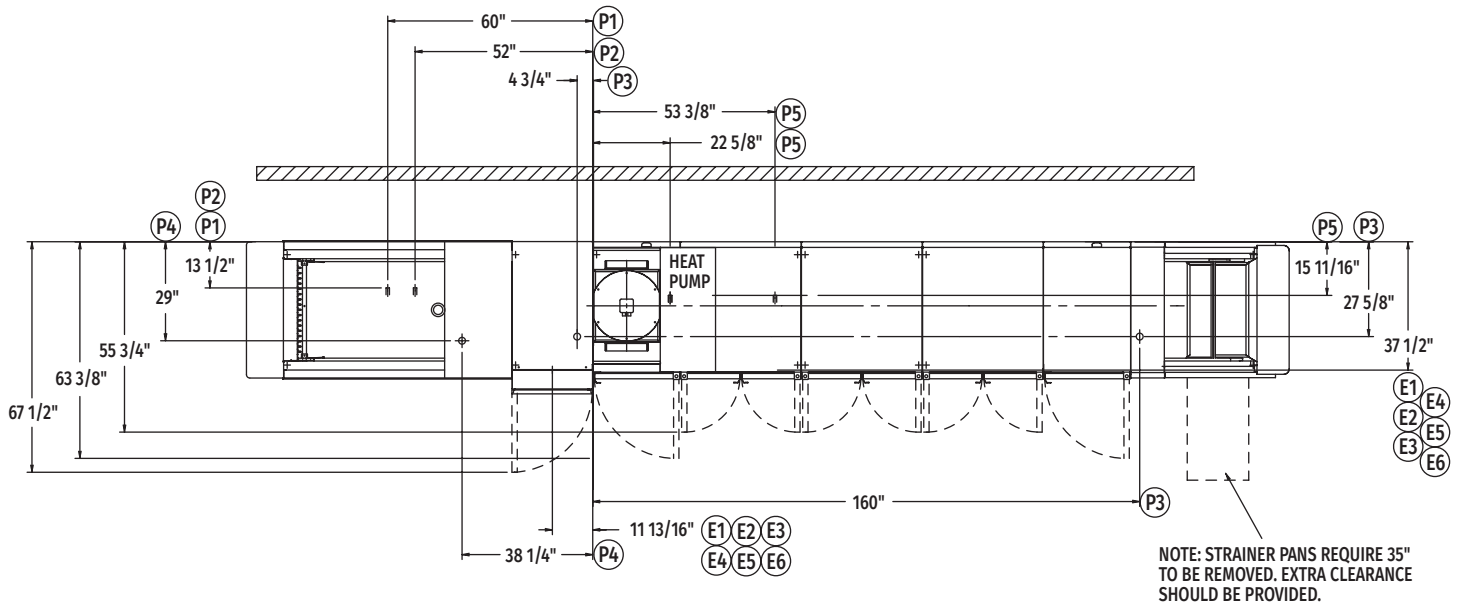
MODEL:  
FT1000e ADVANSYS  
STEAM  
L-R OPERATION  
00-562367  
REV B



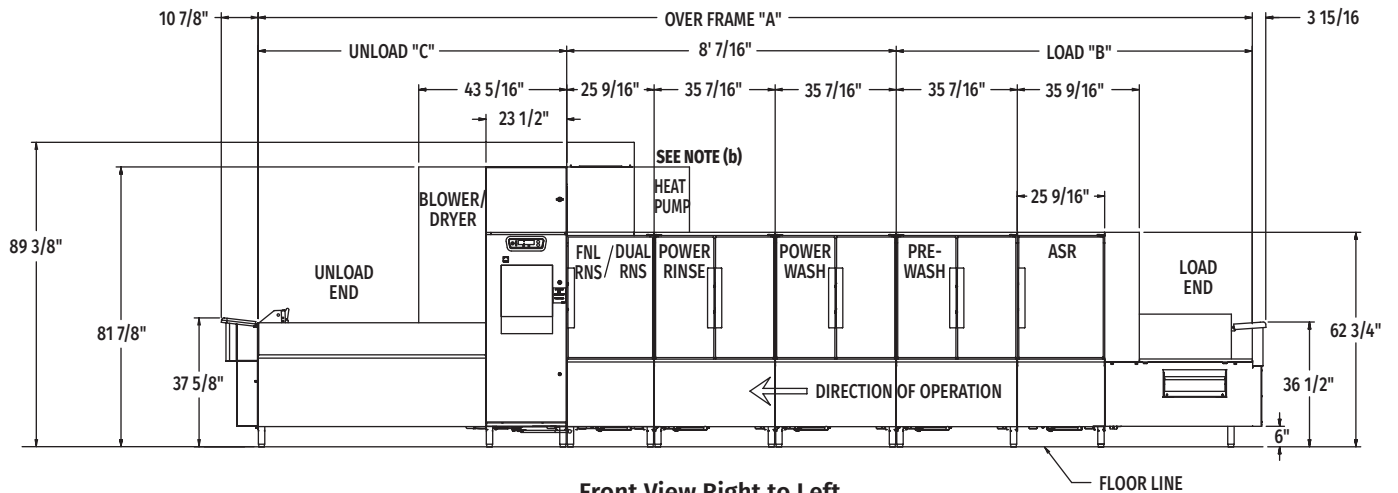
# FT1000e advansys STEAM

## Flight-Type Dishwashing Machine

(Right to Left)



Top View Right to Left

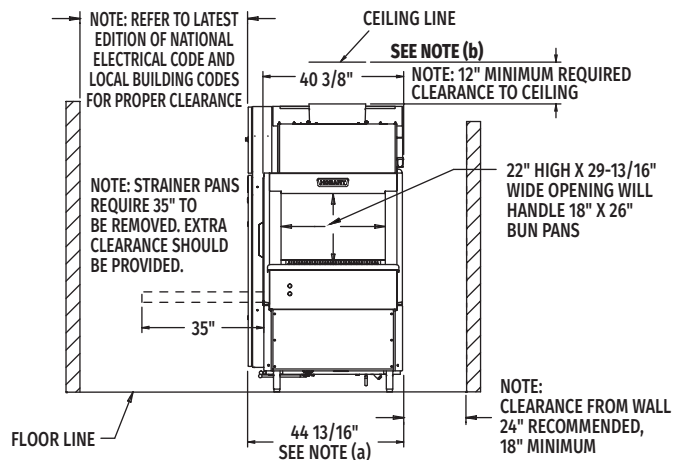


Front View Right to Left

Note: Control box electrical connections – see page 5.

MODEL NO.	"A"	"B"	"C"
FT1023e (7.5'-8'-7.5')	23' 3-1/2"	7' 8-1/2"	7' 6-1/2"
FT1024e (8.5'-8'-7.5')	24' 3-1/4"	8' 8-1/4"	7' 6-1/2"
FT1025e (9.5'-8'-7.5')	25' 3-3/32"	9' 8-3/32"	7' 6-1/2"
FT1025e (7.5'-8'-9')	24' 11-1/4"	7' 8-1/2"	9' 2-1/4"
FT1026e (8.5'-8'-9')	25' 11"	8' 8-1/4"	9' 2-1/4"
FT1027e (9.5'-8'-9')	26' 10-27/32"	9' 8-3/32"	9' 2-1/4"
FT1027e (7.5'-8'-11')	26' 10-7/8"	7' 8-1/2"	11' 1-7/8"
FT1028e (8.5'-8'-11')	27' 10-5/8"	8' 8-1/4"	11' 1-7/8"
FT1029e (9.5'-8'-11')	28' 10-15/32"	9' 8-3/32"	11' 1-7/8"
FT1030e (7.5'-8'-15')	30' 6-3/16"	7' 8-1/2"	14' 9-3/16"
FT1031e (8.5'-8'-15')	31' 5-15/16"	8' 8-1/4"	14' 9-3/16"
FT1032e (9.5'-8'-15')	32' 5-25/32"	9' 8-3/32"	14' 9-3/16"
FT1032e (7.5'-8'-17')	32' 5-3/4"	7' 8-1/2"	16' 8-3/4"
FT1033e (8.5'-8'-17')	33' 5-1/2"	8' 8-1/4"	16' 8-3/4"
FT1034e (9.5'-8'-17')	34' 5-11/32"	9' 8-3/32"	16' 8-3/4"

Note: Overall length of machine is Dimension "A" + 14'-13/16"



Back/Unload End

MODEL: FT1000e ADVANSYS STEAM R-L OPERATION 00-562366 REV B



**LEGEND**

Electrical Connections	
<b>E1</b>	Electric connection for 1TB with or without circuit breakers. 79-1/8" AFF.
<b>E2</b>	Electric connection for 2TB without circuit breakers. 79-1/8" AFF.
<b>E3</b>	Electric connection for 3TB without circuit breakers. 79-1/8" AFF.
<b>E4</b>	Electric connection for 4TB without circuit breakers. 79-1/8" AFF.
<b>E5</b>	Electric connection for 5TB without circuit breakers. 79-1/8" AFF.
<b>E6</b>	Electric connection for 2TB with circuit breakers. 79-1/8" AFF.
Plumbing Connections	
<b>P1</b>	Common hot water connection (automatic fill) 110°F water minimum, 1" FPT, 5-1/2" AFF.
<b>P2</b>	Common cold water connection, 55°F minimum, 1" FPT, 5-1/2" AFF.
<b>P3</b>	Drain connection: Default location is drain to unload. May be drained to load end with field installed kit. 2" FPT, 7" AFF.
<b>P4</b>	Common steam connection (tank heat). 1-1/2" FPT, 7" AFF (12-45 PSI flowing pressure).
<b>P5</b>	Condensate return, gravity connection (tank heat), bucket type traps furnished, 2 connections. 3/4" FPT, 11" AFF.

**SERVICE CONNECTIONS WITH CIRCUIT BREAKERS  
(2) SERVICE CONNECTIONS AS SHOWN BELOW**

<b>E1</b>	<b>Motors, Controls &amp; Blower Dryer Motor (1TB) (1) Service Connection as Shown Below</b>			
	<b>Voltage</b>	<b>Rated Amps</b>	<b>Minimum Supply Circuit Ampacity</b>	<b>Maximum Protective Device</b>
	208/60/3	41.8	60	60
	240/60/3	41.8	60	60
	480/60/3	25.4	35	35
<b>E6</b>	<b>Heat Pump Compressor &amp; Wash Tank Auxiliary Heat, 13.1 KW &amp; Electric Booster (10.7 KW) (2TB) (1) Service Connection as Shown Below</b>			
	<b>Voltage</b>	<b>Rated Amps</b>	<b>Minimum Supply Circuit Ampacity</b>	<b>Maximum Protective Device</b>
	208/60/3	92.6	125	125
	240/60/3	83.8	125	125
	480/60/3	41.7	60	60

<b>Heat Gain to Space (BTU/Hr.)</b>	
<b>Latent</b>	<b>Sensible</b>
100,400	43,000

**WARNING: Plumbing and electrical connections should be made by qualified personnel who will observe all the applicable plumbing, sanitary, safety codes and National Electrical Code.**

**General Notes:**

(a) The control box is attached to the center section and is rotated 90 degrees for shipping.

AFF = Above Finished Floor

All dimensions taken from the floor line may increase 3-1/4" with leg adjustment.

For convenience when cleaning, customer should install water tap near machine with 30 ft. of heavy duty hose with squeeze valve.

This drawing is supplied as a reference for connection information only. It will not be utilized for manufacturing of unit.

**Electrical Notes:**

Service wire temperature rating: 90°C minimum.

Detergent and rinse aid feeder service connections standard on all FT1000e models at machine line voltage.

**Plumbing Notes:**

Recommended building flowing hot water pressure to the dishwasher is 40-45 PSI.

Recommended building flowing cold water to the dishwasher is 30-35 PSI. If cold water is less than 55°F, contact sales engineering.

Water hammer arrestor (meeting ASSE-1010 standard or equivalent) to be supplied (by others) in hot and cold supply lines at service connection.

If steam pressure is less than 12 psi flowing pressure at the dishwasher, contact sales engineering.

**Ventilation Notes:**

Heat pump and enclosure ships on separate skid to yield 81-7/8" door clearance.

Room ventilation is required to handle machine's latent & sensible heat. Majority of latent/sensible heat at unload end of machine.

(b) No facility ventilation within 24" of heat pump enclosure.

**Advansys Notes:**

Refer to Advansys technical report at [www.hobartcorp.com](http://www.hobartcorp.com) or contact sales engineering for guidance with local regulatory compliance.

**Water Quality Required:**

Total water hardness < 3 grains per gallon.

Total suspended solids (TSS) < 10 microns.



**SERVICE CONNECTIONS  
WITH CIRCUIT BREAKERS (1)**

E1 Motors & Controls, Wash, Booster Heat, Blower Dryer Motor, Heat Pump (1TB) (1) Single Point Connection as Shown Below			
Voltage	Rated Amps	Minimum Supply Circuit Ampacity	Maximum Protective Device
480/60/3	67.1	90	90

**SERVICE CONNECTIONS W/O CIRCUIT BREAKERS  
(3) SERVICE CONNECTIONS AS SHOWN BELOW**

E1 Motors & Controls, Blower Dryer Motor (1TB) (1) Service Connection as Shown Below			
Voltage	Rated Amps	Minimum Supply Circuit Ampacity	Maximum Protective Device
208-240/60/3	41.8	60	60
480/60/3	25.4	35	35

E3 Heat Pump Compressor & Wash Tank Auxiliary Heat (3TB) (1) 13.1 kW Connection as Shown Below			
Voltage	Rated Amps	Minimum Supply Circuit Ampacity	Maximum Protective Device
208/60/3	62.9	80	80
240/60/3	58.0	80	80
480/60/3	28.9	40	40

E5 Electric Booster (5TB) (1) 10.7 kW Connection as Shown Below			
Voltage	Rated Amps	Minimum Supply Circuit Ampacity	Maximum Protective Device
208/60/3	29.7	40	40
240/60/3	25.7	35	35
480/60/3	12.9	20	20

**SPECIFICATIONS**

**Capacities**

Conveyor Speed (feet per minute)	4.0 - 8.5
Dishes per Hour	14,316
ASR Tank (U.S. gallons)	7.2
Pre-Wash Tank (U.S. gallons)	40
Wash Tank (U.S. gallons)	40
Rinse Tank (U.S. gallons)	40
Dual Rinse Tank (U.S. gallons)	7.2

**Motor Horsepower**

Auto Soil Removal	¾
ASR Wash	¾
Pre-Wash Tank	3½
Wash Tank	3½
Rinse Tank	3½
Dual Rinse Tank	¾
Final Rinse	½
Conveyor	¾
Blower Dryer	2
Heat Pump Compressor	6

**Water Consumption**

U.S. Gallons per Hour (maximum use)	58
U.S. Gallons per Minute	0.97

**Steam Consumption – Tank Heat**

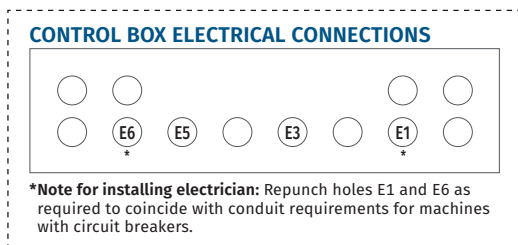
Pounds per Hour (maximum)	138
Regulated – based on 12 to 45 PSI steam at the machine. (160°F rinse minimum – 160°F dual rinse minimum)	

**Electric Tank and Booster Heat**

Electric Tank Heat (KW)	13
Electric Booster (KW)	10.7

**Shipping Weight (approximate)** . . . Varies by individual model  
(Consult your Hobart representative)

**Crated Dimensions** . . . . . Varies by individual model  
(Consult your Hobart representative)



**Detail “A-A”  
(not to scale)**

FT1000 Advansys Water Treatment System	
Model	Description
WS-80	Water Softener
<b>Available through Hobart Service only</b>	
PF-10-EHT	Hi-Temp Filter Housing
SD-510HT	Sediment Filter Cartridge

As continued product improvement is a policy of Hobart, specifications are subject to change without notice.