

HOBART701 S Ridge Avenue, Troy, OH 45374
1-888-4HOBART • www.hobartcorp.com**LT-1 LOW-TEMP
CHEMICAL DISHWASHER****HOBART****STANDARD FEATURES**

- All stainless steel construction including tank, chamber, doors, and frames
- 37 racks per hour
- 1.9 gallons per rack
- 120°F minimum water temperature, 140°F recommended
- Field adjustable from straight to corner operation
- Door cycle switch controls machine operation
- Initial fill manual; auto fill after first cycle
- All doors raise and close together and are guided for ease of operation
- Solenoid operated positive seating drain valve, open and closed; no water waste
- Top mounted detergent, sanitizer, and rinse additive pumps
- High pressure, all stainless steel wash/rinse arms
- 120/60/1 electrical specification
- 1 H.P., 3400 RPM pump motor, 45 GPM
- Self-flushing stainless steel pump strainer; large scrap accumulator
- Delimiting cycle

MODELS

- LT-1

ACCESSORIES

- Peg rack
- Combination rack
- Stainless steel front panel
- 3/4" pressure regulator valve
- Water softener

Specifications, details and dimensions on inside and back.



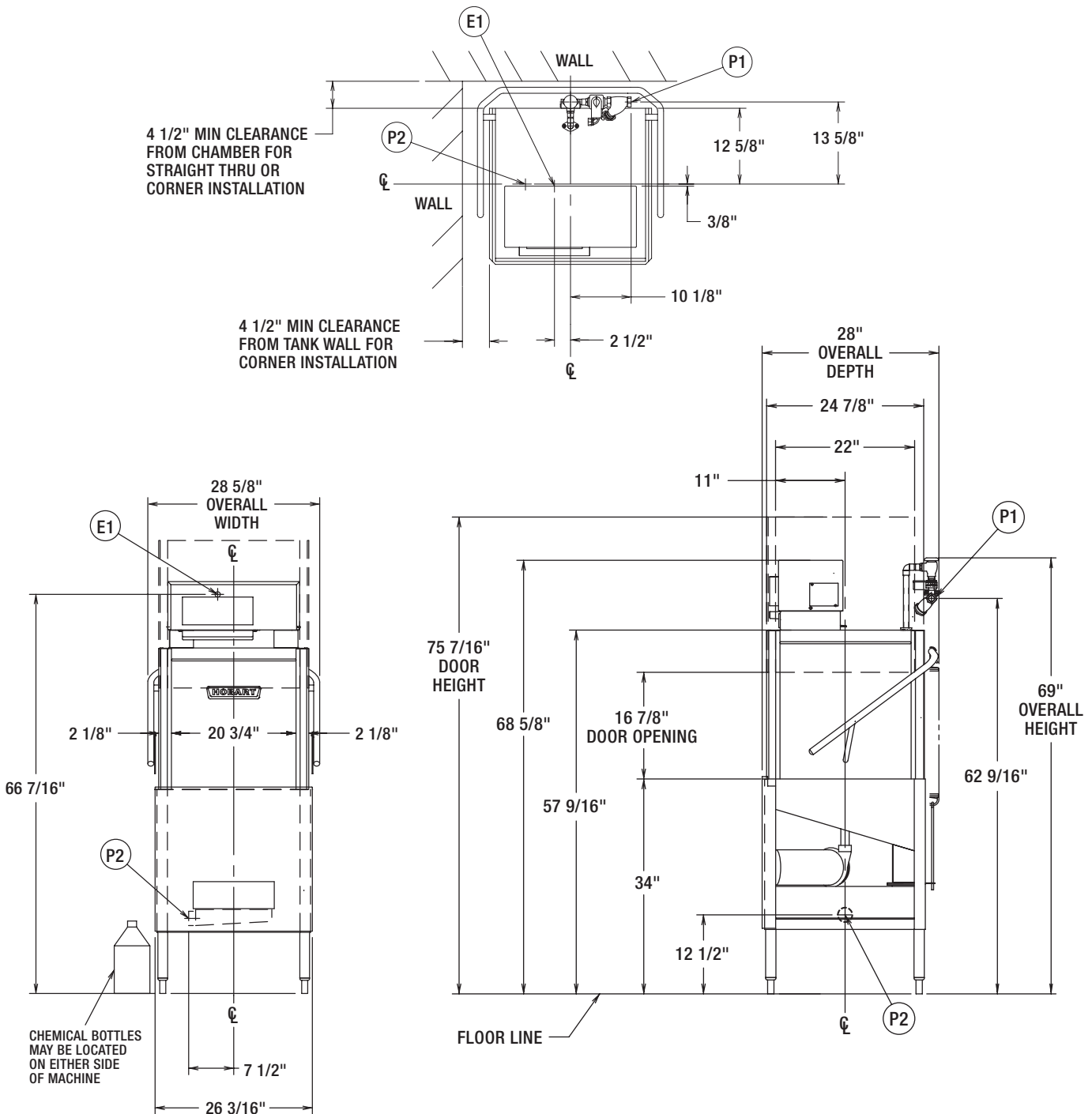
Shown with optional front panel

LT-1 LOW-TEMP CHEMICAL DISHWASHER

LT-1 LOW-TEMP CHEMICAL DISHWASHER

HOBART

701 S Ridge Avenue, Troy, OH 45374
1-888-4HOBART • www.hobartcorp.com



CONNECTION INFORMATION (AFF = ABOVE FINISHED FLOOR)

LEGEND

- E1 ELECTRICAL CONNECTION: 1/2" CONDUIT HOLE, 66-7/16 AFF.
- P1 COMMON WATER CONNECTION: 120°F WATER MIN., 140°F RECOMMENDED;
3/4" FPT, 62-9/16" AFF.
- P2 DRAIN: 2" FPT, 12-1/2" AFF

ELECTRICAL CONNECTION MOTORS AND ELECTRIC TANK HEAT			
ELECTRIC SPECS.	RATED AMPS	MINIMUM SUPPLY CIRCUIT CONDUCTOR AMPACITY	MAXIMUM OVERCURRENT PROTECTIVE DEVICE
120/60/1	14.0	20	20
380/50/3	2.4	15	15
220/50/1	6.5	15	15



701 S Ridge Avenue, Troy, OH 45374
1-888-4HOBART • www.hobartcorp.com

LT-1 LOW-TEMP CHEMICAL DISHWASHER

⚠ WARNING

Electrical and grounding connections must comply with the applicable portions of the National Electrical Code and/or other local electrical codes.

Plumbing connections must comply with applicable sanitary, safety and plumbing codes. Drain and fill line configurations vary, some methods are shown on this drawing.

PLUMBING NOTES:

WATER HAMMER ARRESTOR (MEETING ASSE-1010 STANDARD OR EQUIVALENT) TO BE SUPPLIED (BY OTHERS) IN COMMON WATER SUPPLY LINE AT SERVICE CONNECTION.

RECOMMENDED WATER HARDNESS TO BE 3 GRAINS OR LESS PER GALLON FOR BEST RESULTS.

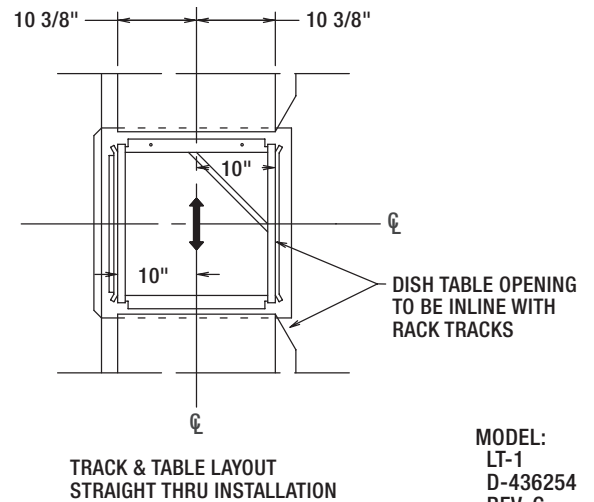
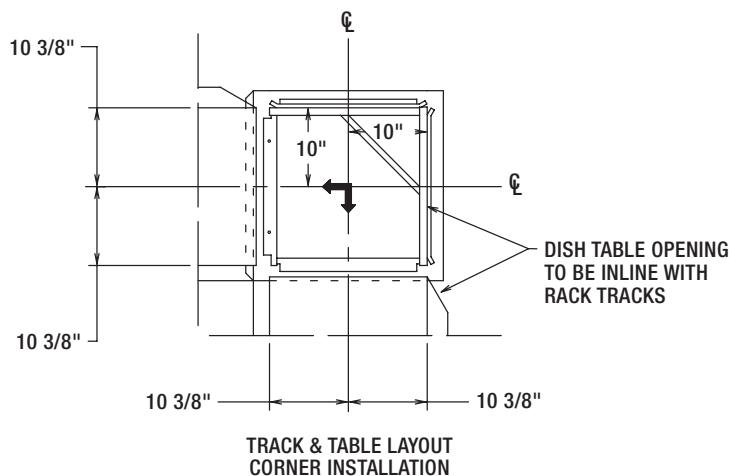
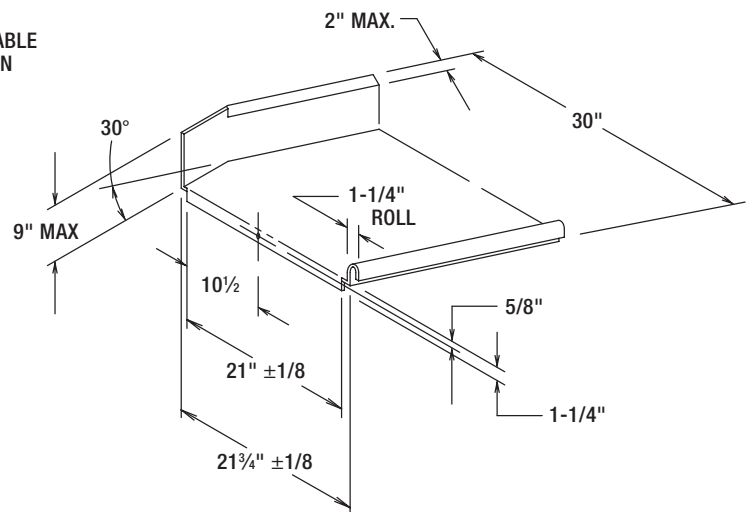
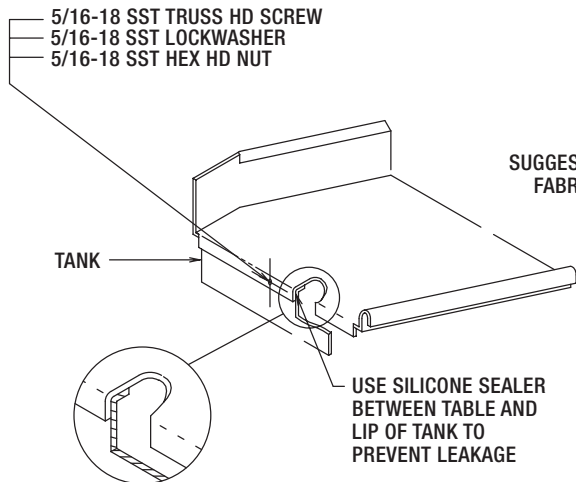
RECOMMENDED BUILDING FLOWING WATER PRESSURE TO THE DISHWASHER IS 20-25 PSI. IF PRESSURE IS HIGHER THAN 25 PSI, A PRESSURE REGULATING VALVE WITH INTERNAL THERMAL EXPANSION BYPASS MUST BE SUPPLIED (BY OTHERS) IN THE WATER LINE TO THE DISHWASHER.

FOR CONVENIENCE WHEN CLEANING, WATER TAP SHOULD BE INSTALLED NEAR MACHINE WITH HEAVY DUTY HOSE AND SQUEEZE VALVE.

MISCELLANEOUS NOTES:

ALL DIMENSIONS TAKEN FROM FLOOR LINE MAY INCREASE 3/4" OR DECREASE 1/2" DEPENDING ON LEG ADJUSTMENT.

NET WEIGHT OF MACHINE: 239 LBS.
DOMESTIC SHIPPING WEIGHT: 304 LBS.
SIZE OF RACKS - 19-3/4" X 19-3/4"



MODEL:
LT-1
D-436254
REV. G

LT-1 LOW-TEMP CHEMICAL DISHWASHER



701 S Ridge Avenue, Troy, OH 45374
1-888-4HOBART • www.hobartcorp.com

SPECIFICATIONS

Model LT-1 low temperature fill and dump dishwasher is delivered for straight thru operation. Three door lift design can be easily converted to a corner operation at installation. Standard electrical voltage specification is 120/60/1. No racks are shipped with machine.

CAUTION: Certain materials, including silver, aluminum, and pewter are attacked by sodium hypochlorite (liquid bleach).

CONSTRUCTION: Tank, doors, chamber, and sump constructed of 16 ga. stainless steel, heliarc welded. Frame constructed of 12 ga. and 16 ga. stainless steel.

DOOR LIFT: All three doors coupled by chrome plated handle and spring counter-balanced. All doors guided for ease of operation and long life.

PUMP: Integral with 1 H.P. motor assures alignment and quiet operation. Pump shaft seal with stainless steel parts and a carbon ceramic sealing interface. Pump capacity is 45 gpm.

CONTROL SYSTEM: Top mounted control box features an on/off switch, drain/fill switch, cycle light, counter and delimiting switch for cleaning. Control box also contains three peristaltic pumps with individual priming switches to automatically inject correct amount of chemicals in the machine each cycle.

CYCLE OPERATION: Closing the doors starts the wash cycle thru door cycle switch. During wash cycle, detergent is injected into machine. After wash cycle, machine empties the wash water into the external scrap accumulator while the flush cycle flushes the wash systems and pump of any remaining detergent. The machine then fills for the rinse/

sanitizer portion of the cycle. During the rinse cycle, rinse aid, and sanitizer are pumped into the machine. At the end of the rinse cycle, the cycle is complete. The rinse water is retained for the next wash cycle. If the cycle is interrupted, it will continue until complete.

Wash	40 seconds
Drain	10 seconds
Flush	3 seconds
Fill	9 seconds
Rinse	20 seconds

WASH AND RINSE: Revolving stainless steel ball bearing wash/rinse arms above and below provide thorough distribution of water jets to all dishware surfaces. Arms are easily removable for cleaning and are interchangeable. Stainless steel tubing connects upper and lower systems.

FILL: Incoming water passes through large capacity line strainer and is controlled by solenoid operated fill valve on upstream side of vacuum breaker. The fill time gives the correct amount of water per cycle when the inlet pressure is 15 to 25 psig.

OVERFLOW: Automatic overflow built into drain tube and directed to external scrap strainer pan.

DRAIN: Solenoid operated drain stopper automatically empties the dishwasher each cycle. Drain stopper is large diameter, high temperature material engineered to provide free flush drain.

STRAINER SYSTEM: Self-flushing, removable, perforated stainless steel, inside pump strainer. A large capacity, outside, perforated stainless steel strainer pan.

	LT-1
Machine Ratings (Mechanical)	
Racks per hour	37
Dishes per hour (Average 18 plates per rack)	666
Glasses per hour (Average 36 per rack)	1332
Table to Table – Inside tank at table connection (Inches)	25¼"
Overall Dimensions (H x W x D) (Inches)	69" x 28½" x 28"
Wash Motor – H.P.	1
Wash Tank Capacity – Gallons	1.9
Wash Pump Capacity – Gallons per minute – Weir Test	45
Rinse Consumption – Gallons per hour – Maximum at 20 lbs. flow pressure	70.3
Rinse Cycle – Gallons per rack – at 20 PSI flow	1.9
Peak Rate of Drain Flow – Gallons per minute (Initial rate with full tank)	2
Shipping Weight Crated – Approximate	304 lbs.

As continued product improvement is a policy of Hobart, specifications are subject to change without notice.